

0 200 400



SCALE: 1"=200'

- STONE FOUND
- 5/8" REBAR FOUND UNLESS OTHERWISE NOTED
- 5/8" REBAR SET WITH I.D. CAP I.D. CAP MARKED "BAKER 6938"

REFERENCES

- DEED VOL. 265 PAGE 735
- DEED VOL. 261 PAGE 741
- O.R. VOL. 155 PAGE 774
- PLAT VOL. 19 PAGE 1812
- PLAT VOL. 18 PAGE 664
- PLAT VOL. 17 PAGE 694
- BEARINGS FROM PLAT VOL. 18 PAGE 664

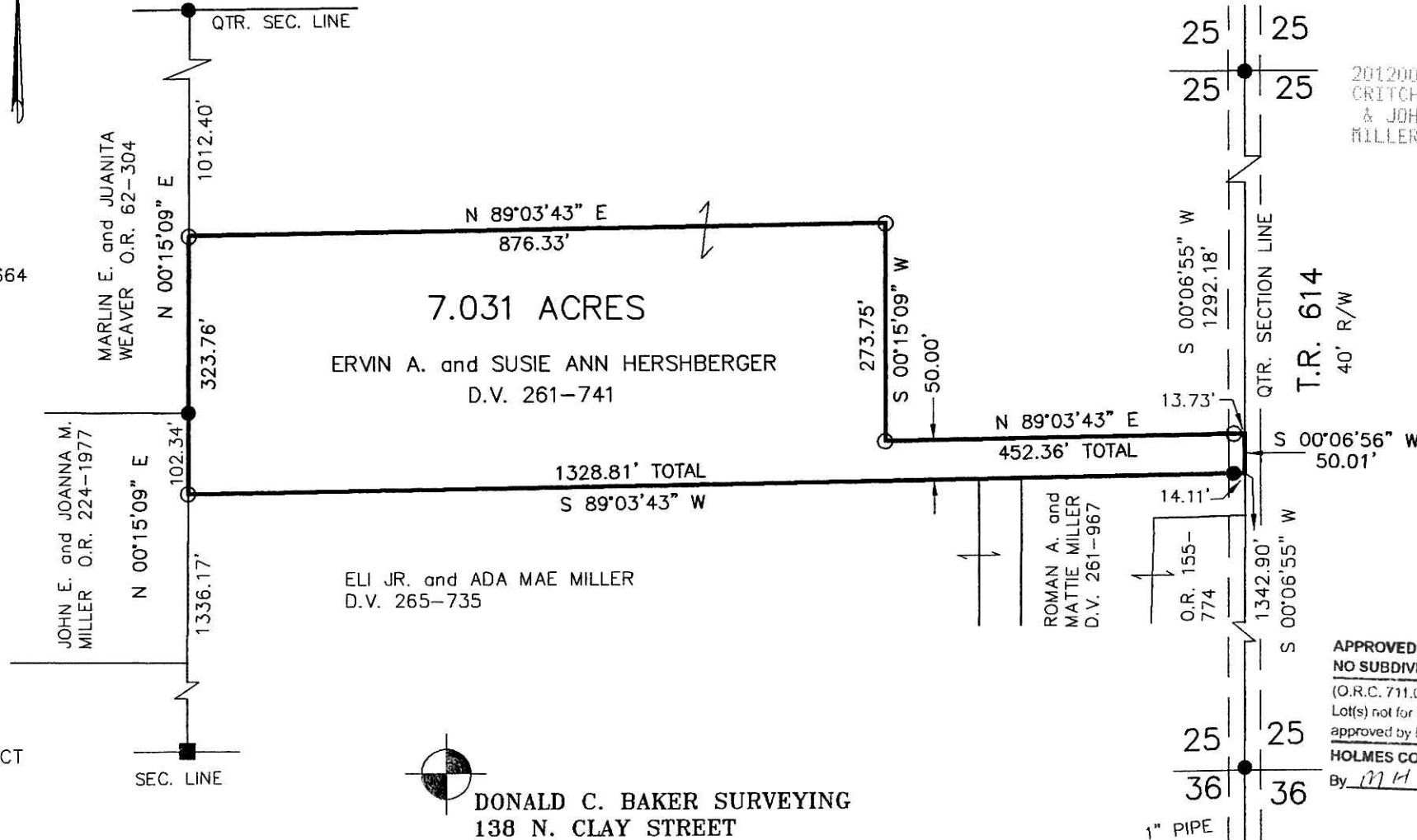
SALT CREEK TOWNSHIP  
 S.W. QTR. SECTION 25  
 T-15 N; R-12 W  
 HOLMES COUNTY, OHIO

SURVEYED FOR: ERVIN HERSHBERGER

201200077053  
 Filed for Record in  
 HOLMES COUNTY, OH  
 ANITA HALL, COUNTY RECORDER  
 05-10-2012 At 09:44 am.  
 SMALL PLAT 40.00  
 OR Book 19 Page 2068 - 2068

OR 234 p 467

201200077053  
 CRITCHFIELD,  
 & JOHNSTON ATTYS  
 MILLERSBURG OH



I CERTIFY THIS SURVEY TO BE CORRECT TO THE BEST OF MY KNOWLEDGE.

*Donald C. Baker*

DONALD C. BAKER P.S. 6938

DATE: APRIL 5, 2012

FDB\KES

FILE NAME: WORK5-2012\S-133-12\MLD



DONALD C. BAKER SURVEYING  
 138 N. CLAY STREET  
 MILLERSBURG, OHIO 44654  
 PH. 330-674-4788  
 FAX 330-674-6027

APPROVED FOR TRANSFER ONLY  
 NO SUBDIVISION PLAT REQUIRED  
 (O.R.C. 711.001 & 711.131)  
 Lot(s) not for building unless  
 approved by Board of Health.  
**HCPC**  
 HOLMES CO. PLANNING COMMISSION  
 By MLH Date 5/4/12

PLAT APPROVED

5/3/2012