

SCALE: 1"=100'

- P.K. NAIL FOUND
- ▲ R.R. SPIKE FOUND
- 5/8" REBAR FOUND
- UNLESS OTHERWISE NOTED
- 5/8" REBAR SET WITH I.D. CAP
- I.D. CAP MARKED "BAKER 6938"

RICHLAND TOWNSHIP
N.W. QTR. SECTION 2
T-8 N; R-9 W
HOLMES COUNTY, OHIO

SURVEYED FOR: DOROTHY OGI ESTATE

NOTE: ALL REC. DISTANCES SHOWN ON THIS
PLAT ARE FROM DEED VOL. 181 PG. 877.

201200076961
Filed for Record in
HOLMES COUNTY, OH
ANITA HALL, COUNTY RECORDER
05-03-2012 At 02:47 PM.
SMALL PLAT 40.00
OR Book 19 Page 2065 - 2065

APPROVED FOR TRANSFER ONLY
NO SUBDIVISION PLAT REQUIRED

O.R.C. 711.001 & 711.131
Not(s) not for building unless
approved by Board of Health.



HOLMES CO. PLANNING COMMISSION
By JB Date 4-4-12

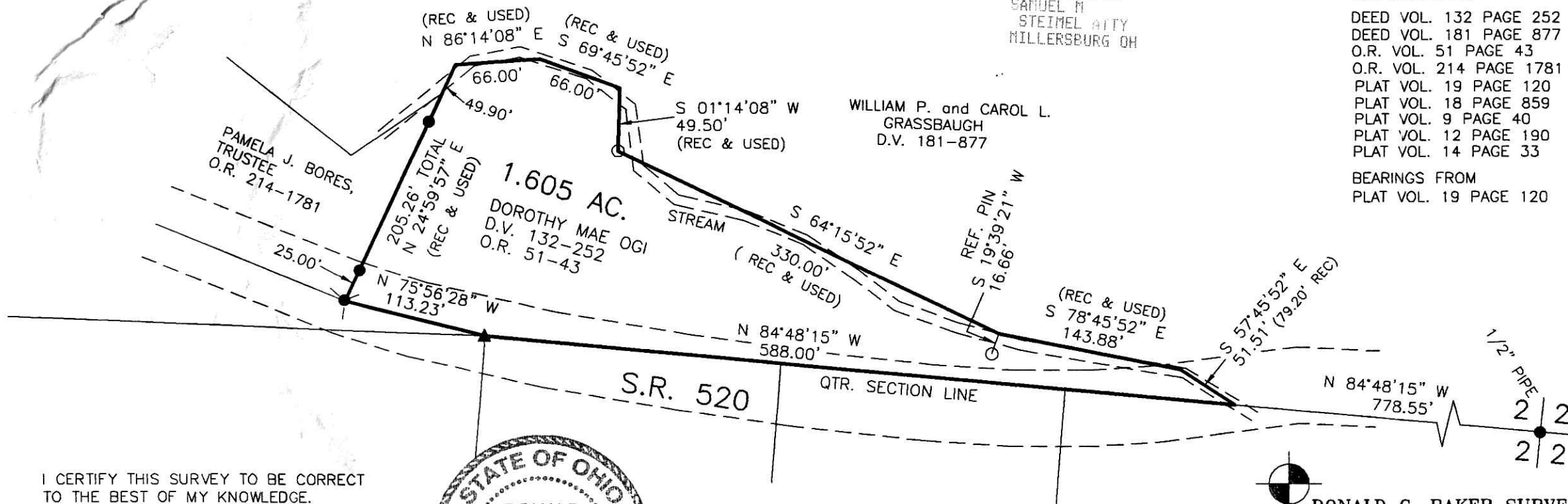
OR 234p54

201200076961
SAMUEL M
STEIMEL CITY
MILLERSBURG OH

REFERENCES

- DEED VOL. 132 PAGE 252
- DEED VOL. 181 PAGE 877
- O.R. VOL. 51 PAGE 43
- O.R. VOL. 214 PAGE 1781
- PLAT VOL. 19 PAGE 120
- PLAT VOL. 18 PAGE 859
- PLAT VOL. 9 PAGE 40
- PLAT VOL. 12 PAGE 190
- PLAT VOL. 14 PAGE 33

BEARINGS FROM
PLAT VOL. 19 PAGE 120



I CERTIFY THIS SURVEY TO BE CORRECT
TO THE BEST OF MY KNOWLEDGE.

Donald C. Baker

DONALD C. BAKER P.S. 6938

DATE: OCT. 31, 2011

KES/CJG

FILE NAME: WORK3\S-478-11



PLAT APPROVED

4/2/2012

DONALD C. BAKER SURVEYING
138 N. CLAY STREET
MILLERSBURG, OHIO 44654
PH. 330-674-4788
FAX 330-674-6027