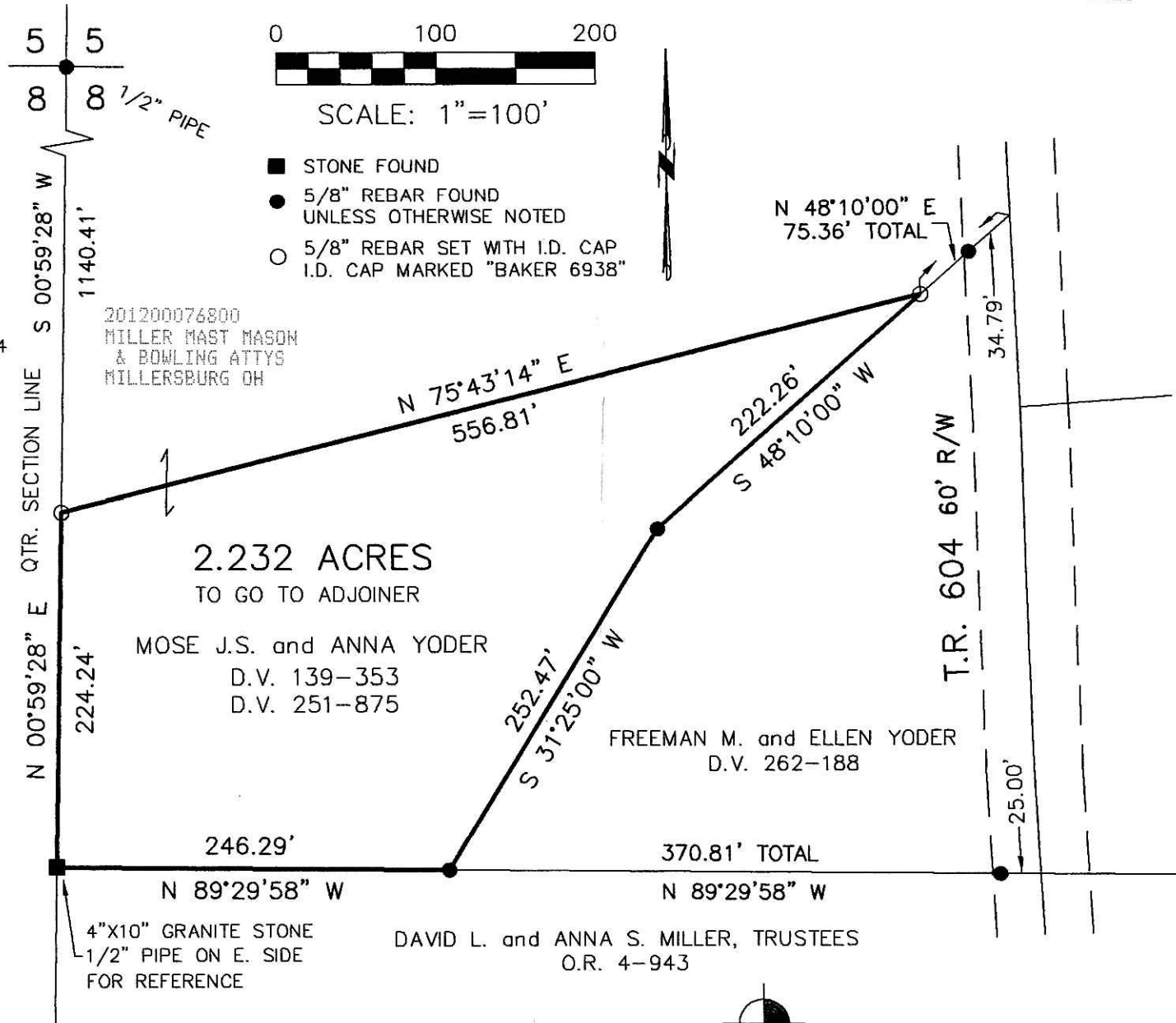


SALT CREEK TOWNSHIP
N.E. QTR. SECTION 8
T-14 N; R-12 W
HOLMES COUNTY, OHIO

SURVEYED FOR: MOSE YODER

REFERENCES

DEED VOL. 251 PAGE 875
PLAT VOL. 14 PAGE 354
BEARINGS FROM PLAT VOL. 14 PAGE 354



Additional approval for this and any adjacent properties must be requested and granted prior to any future transfers by deed. Recording of this document does not waive the requirements of local Health District Subdivision Regulations or other governing authorities which may be in effect at the time of any future deed transfer.



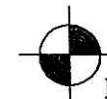
I CERTIFY THIS SURVEY TO BE CORRECT TO THE BEST OF MY KNOWLEDGE.

A.L.G.
AARON L. GERBER P.S. 8379
DATE: FEB. 20, 2012
ALG\DCB2
FILE NAME: WORK3-2012\S-71-12\ALG

201200076800
Filed for Record in
HOLMES COUNTY, OH
ANITA HALL, COUNTY RECORDER
04-24-2012 At 02:37 pm.
SMALL PLAT 40.00
OR Book 19 Page 2060 - 2060
OR 233 p 2666

PLAT APPROVED

4/10/2012



DONALD C. BAKER SURVEYING
138 N. CLAY STREET
MILLERSBURG, OHIO 44654
PH. 330-674-4788
FAX 330-674-6027