

SCALE: 1"=200'

- 5/8" REBAR FOUND UNLESS OTHERWISE NOTED
- 5/8" REBAR SET WITH I.D. CAP I.D. CAP MARKED "BAKER 6938"

REFERENCES

DEED VOL. 254 PAGE 511
 DEED VOL. 175 PAGE 580
 PLAT VOL. 12 PAGE 725
 BEARINGS FROM PLAT VOL. 12 PAGE 725



I CERTIFY THIS SURVEY TO BE CORRECT TO THE BEST OF MY KNOWLEDGE.

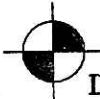
Donald C. Baker

DONALD C. BAKER P.S. 6938

DATE: FEBRUARY 24, 2012

FDB/KES

FILE NAME: WORK3-2012\S-93-12\MLD



DONALD C. BAKER SURVEYING
 138 N. CLAY STREET
 MILLERSBURG, OHIO 44654
 PH. 330-674-4788
 FAX 330-674-6027

WASHINGTON TOWNSHIP
 N.E. QTR. SECTION 36
 T-20 N; R-15 W
 HOLMES COUNTY, OHIO

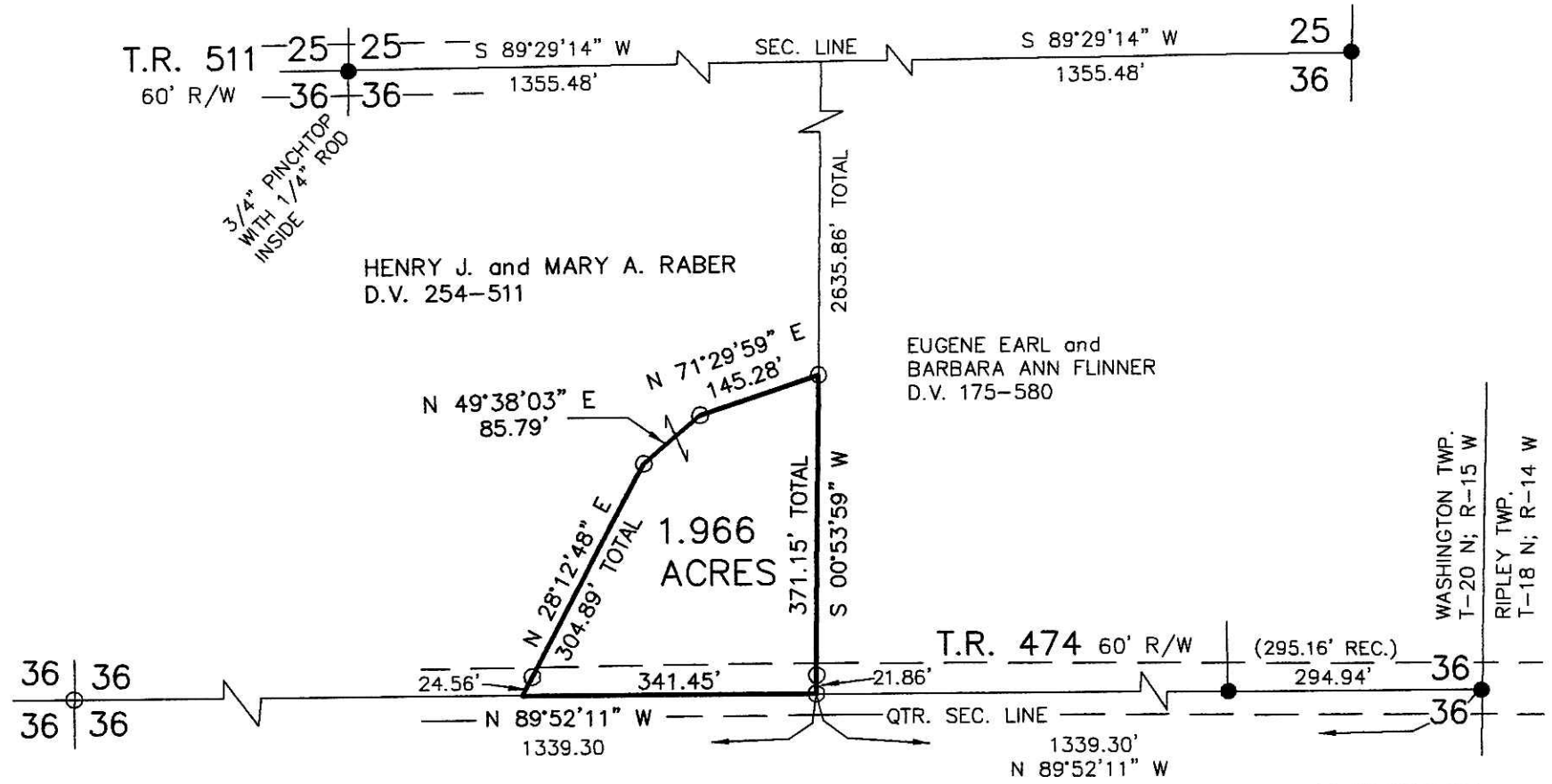
SURVEYED FOR: REUBEN RABER

Instrument 201200076619 OR Book Page 19 2050

201200076619
 Filed for Record in
 HOLMES COUNTY, OH
 ANITA HALL, COUNTY RECORDER
 04-16-2012 At 12:50 pm.
 SMALL PLAT 40.00
 OR Book 19 Page 2050 - 2050

ORV 233 PG 1712

201200076619
 PAUL A MILLER
 MILLERSBURG OH 44654



PLAT APPROVED

3/12/2012