

0 100 200



SCALE: 1"=100'

- 5/8" REBAR FOUND UNLESS OTHERWISE NOTED
- 5/8" REBAR SET WITH I.D. CAP I.D. CAP MARKED "BAKER 6938"

REFERENCES

DEED VOL. 223 PAGE 791
 O.R. VOL. 181 PAGE 790
 PLAT VOL. 19 PAGE 439
 BEARINGS FROM PLAT VOL. 19 PAGE 439



I CERTIFY THIS SURVEY TO BE CORRECT TO THE BEST OF MY KNOWLEDGE.

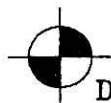
A.L.G.

AARON L. GERBER P.S. 8379

DATE: DECEMBER 23, 2011

ALG\CJG

FILE NAME: WORK3-2011\S-584-11\AG-MD



DONALD C. BAKER SURVEYING
 138 N. CLAY STREET
 MILLERSBURG, OHIO 44654
 PH. 330-674-4788
 FAX 330-674-6027

RIPLEY TOWNSHIP
 N.E. QTR. SECTION 12
 T-17 N; R-14 W
 HOLMES COUNTY, OHIO

SURVEYED FOR: RAYMOND MILLER

Instrument 201200075275 OR
 Book Page 19 2000

201200075275
 Filed for Record in
 HOLMES COUNTY, OH
 ANITA HALL, COUNTY RECORDER
 02-02-2012 At 01:52 PM.
 SMALL PLAT 40.00
 OR Book 19 Page 2000 - 2000

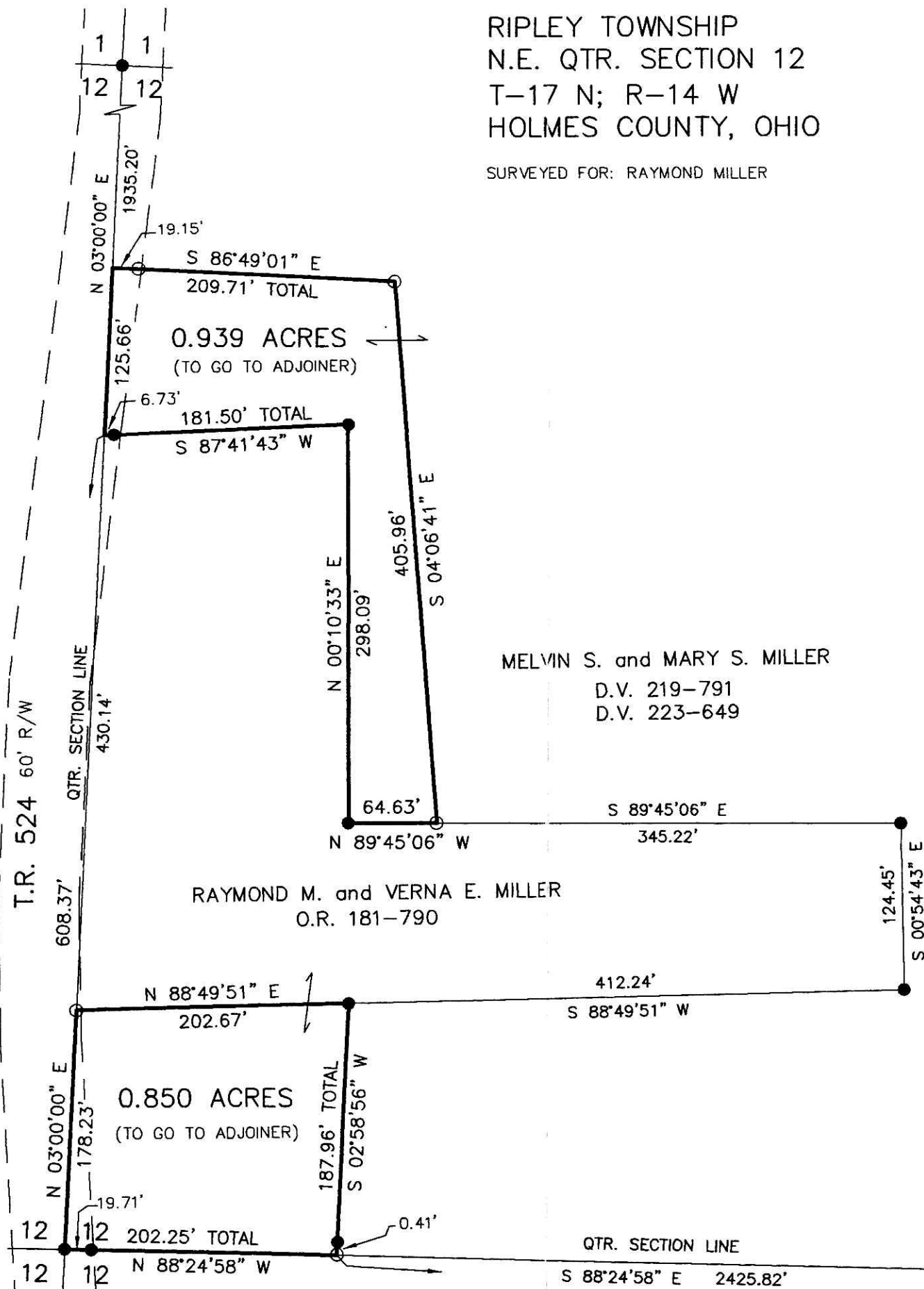
ORV 231 pages 2052,
 2055,
 2059

Additional approval for this and any adjacent properties must be requested and granted prior to any future transfers by deed. Recording of this document does not waive the requirements of local Health District, Subdivision Regulations or other governing authorities which may be in effect at the time of any future deed transfer.

201200075275
 MONROE STREET TITLE
 MILLERSBURG OH 44654

APPROVED FOR TITLE
 NO SURV. DISCREPANCIES
 (O.R.C. 711.11 & 711.12)
 Lot(s) not for Subdivision
 approved by Board of
 HOLMES CO. PLANNING COMM.

By *VB* Date *1-5-12*



T.R. 525 30' R/W
 RIPLEY TWP. T-17 N, R-14 W
 PRAIRIE TWP. T-13 N, R-13 W

PLAT APPROVED

1/4/2012