

0 100 200



SCALE: 1"=100'

- ▲ R.R. SPIKE FOUND
- 5/8" REBAR FOUND UNLESS OTHERWISE NOTED
- 5/8" REBAR SET WITH I.D. CAP I.D. CAP MARKED "BAKER 6938"



PAIN TOWNSHIP
S.W. QTR. SECTION 26
T-15 N; R-11 W
HOLMES COUNTY, OHIO

SURVEYED FOR: KAUFMAN REALTY

REFERENCES

DEED VOL. 218 PAGE 327
DEED VOL. 244 PAGE 147
O.R. VOL. 199 PAGE 252
O.R. VOL. 189 PAGE 3044
PLAT VOL. 19 PAGE 739
BEARINGS FROM PLAT VOL. 19 PAGE 739

Instrument 201200074953 OR
Book Page 19 1989

201200074953
Filed for Record in
HOLMES COUNTY, OH
ANITA HALL, COUNTY RECORDER
01-13-2012 At 11:30 am.
SMALL PLAT 40.00
OR Book 19 Page 1989 - 1989

OR 231p489



I CERTIFY THIS SURVEY TO BE CORRECT TO THE BEST OF MY KNOWLEDGE.

Donald C. Baker

DONALD C. BAKER P.S. 6938

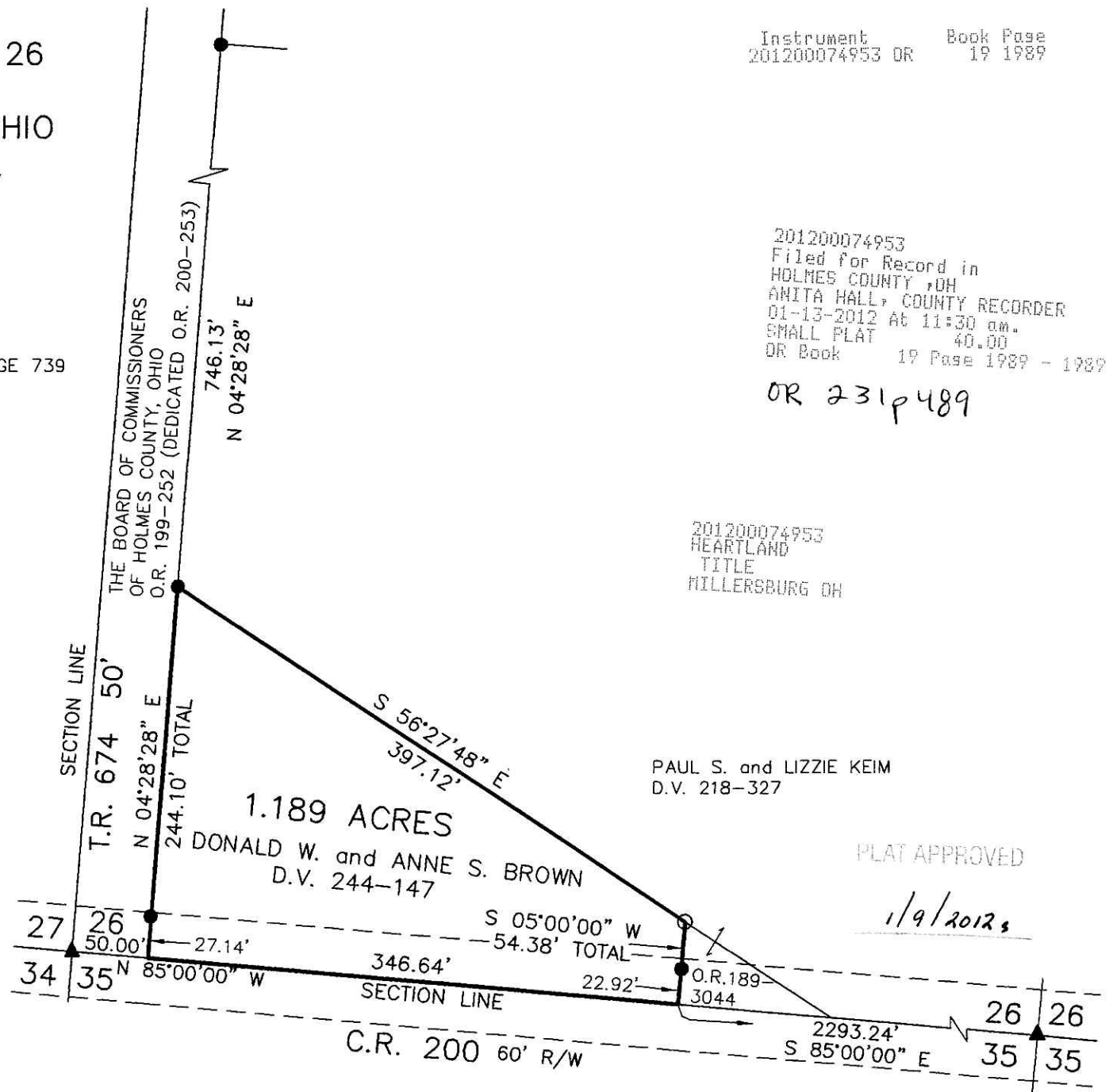
DATE: DECEMBER 29, 2011

FDB\CJG

FILE NAME: WORK4\S-591-11\MLD



DONALD C. BAKER SURVEYING
138 N. CLAY STREET
MILLERSBURG, OHIO 44654
PH. 330-674-4788
FAX 330-674-6027



201200074953
HEARTLAND
TITLE
MILLERSBURG OH

PAUL S. and LIZZIE KEIM
D.V. 218-327

PLAT APPROVED

1/9/2012