

BEARINGS ESTABLISHED FROM GRID NORTH AND ARE TO ESTABLISH ANGULAR MEASUREMENT ONLY.

201100072503
REYNOLDS TITLE AGENCY
441 W LIBERTY ST
WOOSTER OH 44691

201100072503
Filed for Record in
HOLMES COUNTY, OH
ANITA HALL, COUNTY RECORDER
08-03-2011 At 02:04 pm.
SMALL PLAT 40.00
OR Book 19 Page 1874 - 187
ORV 227 page 2185
RECORDER'S USE ONLY

CALL TABLE

COURSE	BEARING	DISTANCE
1	S 12°10'40"E	63.23'
2	N 89°01'11"W	73.01'
3	N 89°01'11"W	60.50'
4	N 12°10'40"W	32.84'

- LEGEND:
- = STONE FD.
 - = 5/8" RE-BAR FD. UNLESS NOTED
 - = POINT-OF-DEPARTURE
 - = 5/8" X 30" RE-BAR W/PLASTIC I.D. CAP SET
 - ⊗ = R/R SPIKE SET
 - △ = R/R SPIKE FD.
 - * = CAPPED "SHAMP"

REFERENCE DOCUMENTS:
TAX MAPS
DEEDS AS SHOWN
SURVEY PLATS: 14/510, 19/911
& WAYNE CO. PLATS X-416A,
SS-668

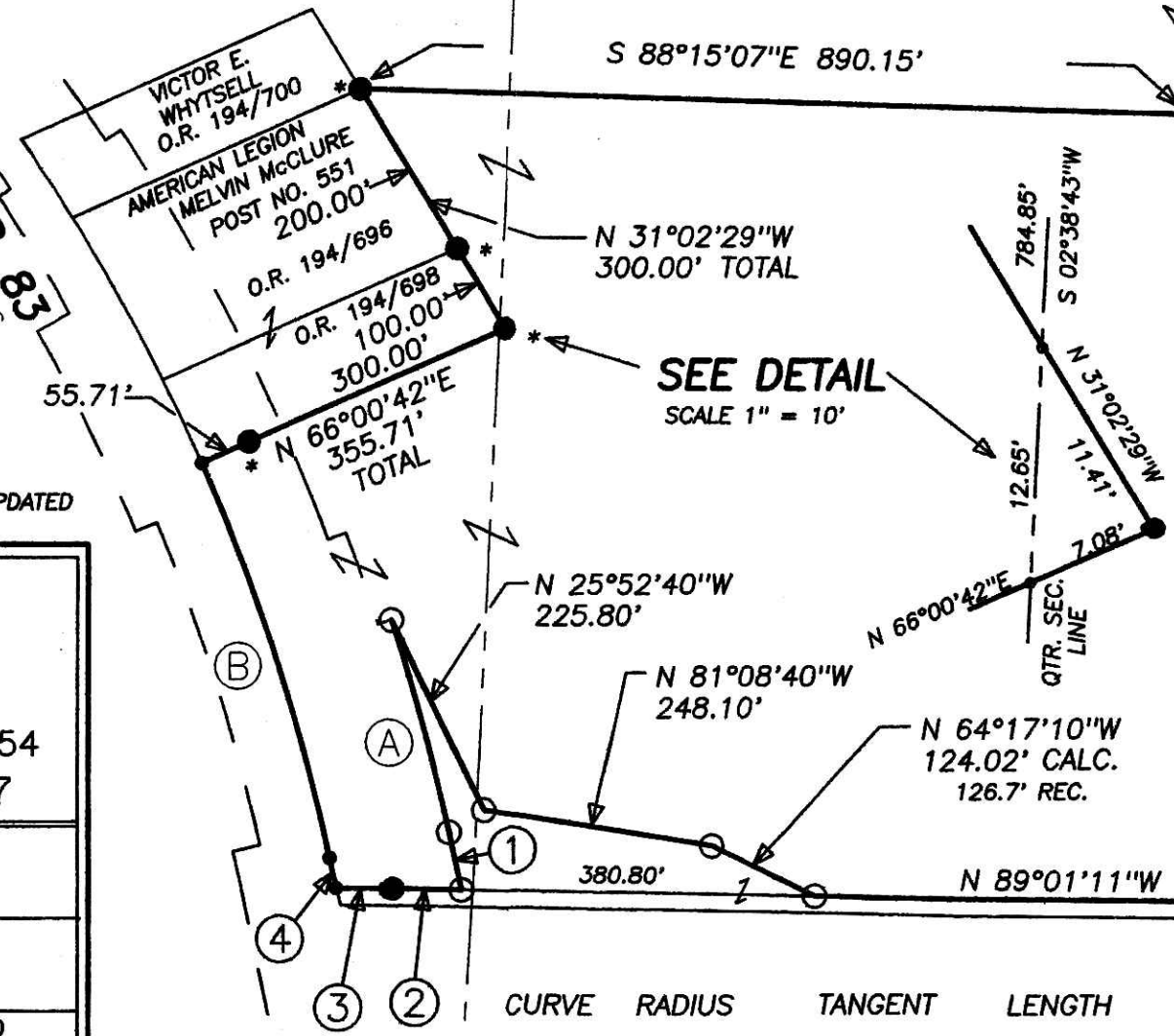
I CERTIFY THIS PLAT & SURVEY TO BE CORRECT TO THE BEST OF MY KNOWLEDGE:

J. Shamp 7/18/11

DECEMBER 13, 2006

JIM SHAMP, REG. SUR. NO. S-6088 DATE NAMES OF PROPERTY OWNERS UPDATED JULY 18, 2011

S.R. 83
R/W VARIES



35.561 ACRES TOTAL
(32.445 AC. IN N.E. QTR. & 3.116 AC. IN N.W. QTR.)

ALVIN E. & LINDA SUE HILTY
O.R. 210/1893
PLAT APPROVED
8/13/2011 R/S

HEARTLAND SURVEYING, INC
Jim Shamp
5210 T.R. 257 MILLERSBURG, OH 44654
PH: 330-674-4698 FAX: 330-674-0897

SURVEY		STATE	
VICTOR E. WHYTSELL		OHIO	
COUNTY	TWP.	RNG.	TWP.
HOLMES	PRAIRIE	13 W	14 N
NORTHEAST & NORTHWEST QUARTERS OF SECTION 28		JOB NO. 940315.CRD 940315A.PL LAY 1,2	

CURVE	RADIUS	TANGENT	LENGTH	DELTA	DEGREE	CHORD	CH.BEARING
A	2278.63'	117.65'	235.09'	5°54'41"	2°30'52"	234.99'	S 15°08'00"E
B	2148.63'	223.72'	445.84'	11°53'20"	2°40'00"	445.04'	N 18°07'20"W