

MECHANIC TOWNSHIP  
S.E. & S.W. QTRS. SECTION 19  
T-8 N; R-6 W  
HOLMES COUNTY, OHIO

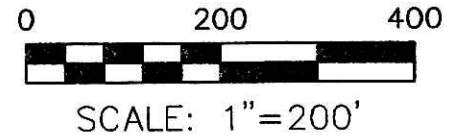
SURVEYED FOR: ADEN R. YODER

REFERENCES

O.R. VOL. 51 PAGE 561  
O.R. VOL. 60 PAGES 226 & 243  
O.R. VOL. 89 PAGE 619  
O.R. VOL. 129 PAGE 303  
O.R. VOL. 217 PAGE 1059

PLAT VOL. 17 PAGE 657  
PLAT VOL. 18 PAGES 92 & 432  
PLAT VOL. 19 PAGE 1417

BEARINGS FROM PLAT VOL. 19 PAGE 1417



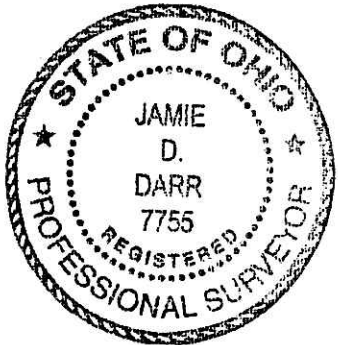
- ▲ R.R. SPIKE FOUND
- 5/8" REBAR (BAKER) FOUND UNLESS OTHERWISE NOTED

201100072266 ORV 227  
Filed for Record in pg 1126  
HOLMES COUNTY, OH  
ANITA HALL, COUNTY RECORDER  
07-18-2011 At 01:43 PM.  
SMALL PLAT 40.00  
OR Book 19 Page 1867 - 1867  
APPROVED FOR TRANSFER ONLY  
NO SURVEYING PLAT REQUIRED  
(O.R.C. 711.02 & 711.131  
Lot(s) not for bonding unless  
approved by Board of Health.  
HOLMES CO. PLANNING COMM.

By JTB Date 7-5-11

201100072266  
CRITCHFIELD CRITCHFIELD & JOHNSTON  
MILLERSBURG OH 44654

LINE	BEARING	DISTANCE
L1	N 71°50'17" E	35.07'
L2	N 27°16'26" W	54.53'



I CERTIFY THIS SURVEY TO BE CORRECT TO THE BEST OF MY KNOWLEDGE.

JAMIE D. DARR P.S. 7755

DATE: FEB. 9, 2011

JDD\ALG

FILE NAME: WORK3\S-2-11\ERZ

IVAN R. and ESTHER TROYER  
O.R. 60-226

DAVID N. YODER  
O.R. 216-3232  
O.R. 217-1059

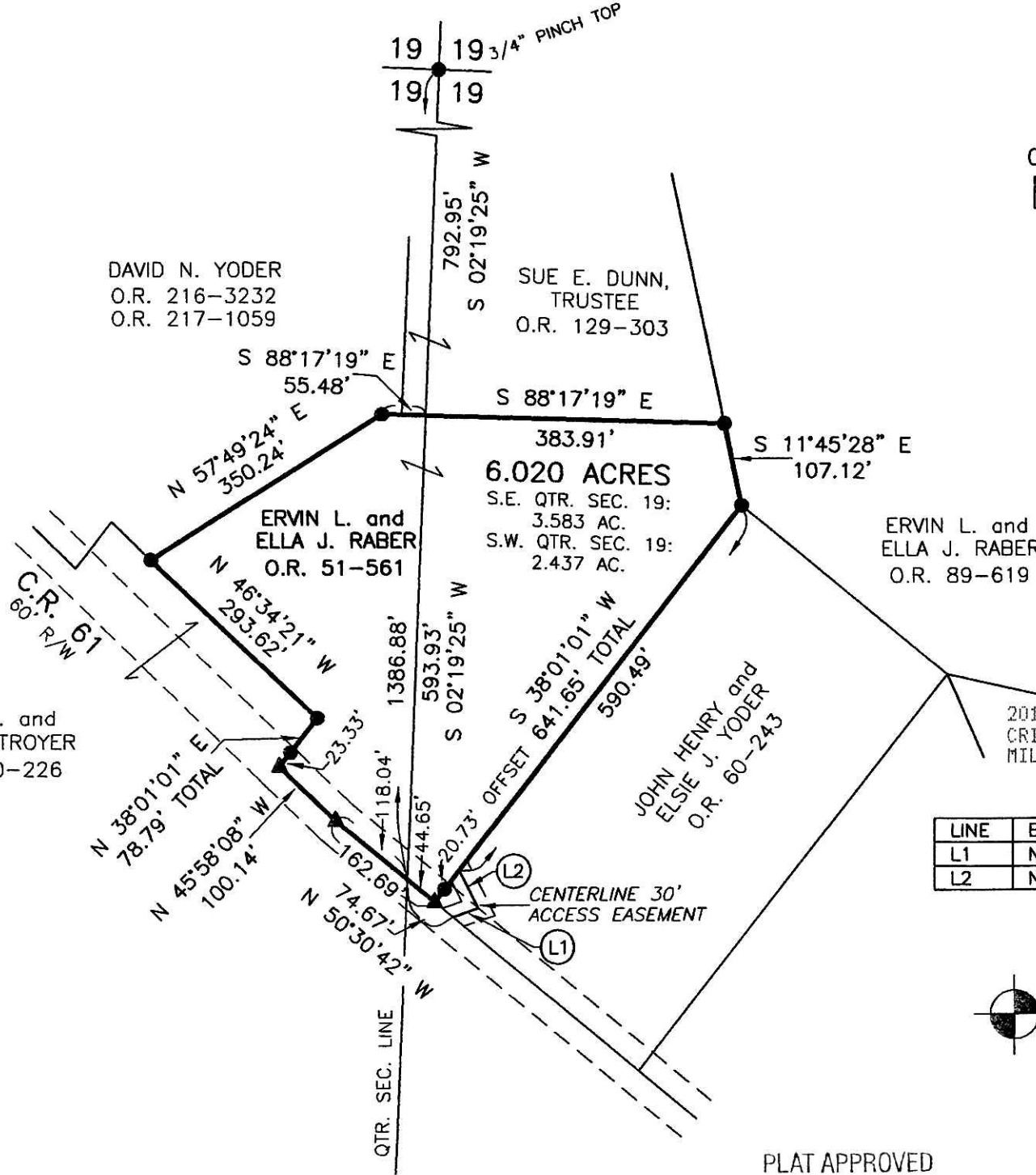
SUE E. DUNN, TRUSTEE  
O.R. 129-303

ERVIN L. and ELLA J. RABER  
O.R. 51-561

6.020 ACRES  
S.E. QTR. SEC. 19: 3.583 AC.  
S.W. QTR. SEC. 19: 2.437 AC.

ERVIN L. and ELLA J. RABER  
O.R. 89-619

JOHN HENRY and ELSIE J. YODER  
O.R. 60-243



PLAT APPROVED

7/1/2011

DONALD C. BAKER SURVEYING  
138 N. CLAY STREET  
MILLERSBURG, OHIO 44654  
PH. 330-674-4788  
FAX 330-674-6027