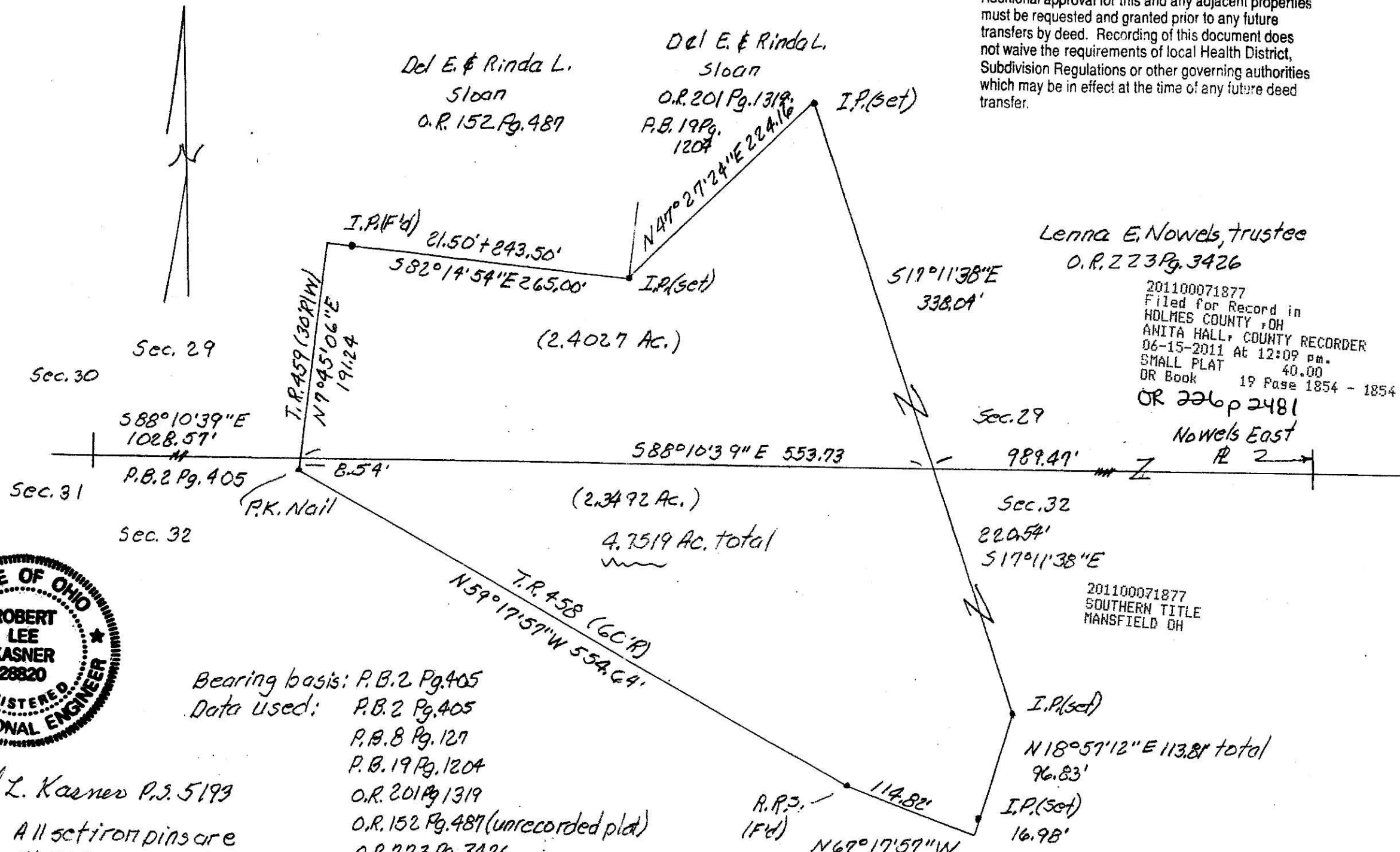


Additional approval for this and any adjacent properties must be requested and granted prior to any future transfers by deed. Recording of this document does not waive the requirements of local Health District, Subdivision Regulations or other governing authorities which may be in effect at the time of any future deed transfer.



Lenna E. Nowels, trustee  
O.R. 223 Pg. 3426

201100071877  
Filed for Record in  
HOLMES COUNTY, OH  
ANITA HALL, COUNTY RECORDER  
06-15-2011 At 12:09 pm.  
SMALL PLAT 40.00  
OR Book 19 Page 1854 - 1854  
OR 226 p 2481

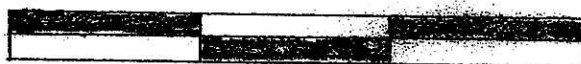
201100071877  
SOUTHERN TITLE  
MANSFIELD OH



Robert L. Kasner P.E. 5199

All set iron pins are  
5/8" x 30" rebar RLK5193

Bearing basis: P.B. 2 Pg. 405  
Data Used: P.B. 2 Pg. 405  
P.B. 8 Pg. 127  
P.B. 19 Pg. 1204  
O.R. 201 Pg. 1319  
O.R. 152 Pg. 487 (unrecorded plat)  
O.R. 223 Pg. 3426  
D.V. 44 Pg. 62-69  
Tax Maps.



Graphic Scale in Feet  
Scale: 1" = 100'

Survey and description by  
Robert L. Kasner P.E. P.S.  
7007 S.R. 39  
Millersburg, Oh. 44654  
330 674 9146  
3/22/11

Located in N.W. 1/4 Sec. 32  
& S.W. 1/4 Sec. 29, T20N R15W  
Washington Twp, Holmes  
County, State of Ohio.

PLAT APPROVED

5/26/2011