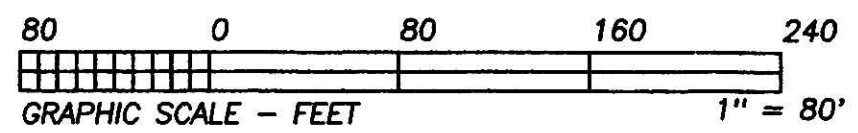


BEARINGS ESTABLISHED FROM PLAT 2/245 AND ARE TO DENOTE ANGULAR MEASUREMENT ONLY.



# PROPOSED ANNEXATION TO THE VILLAGE OF MILLERSBURG

**EXHIBIT B**  
 201100071800  
 Filed for Record in  
 HOLMES COUNTY, OH  
 ANITA HALL, COUNTY RECORDER  
 06-09-2011 At 02:34 pm.  
 SMALL PLAT 40.00  
 DR Book 19 Page 1849 - 1849  
**RECORDERS SPACE**

**APPROVAL OF THE HOLLMES COUNTY COMMISSIONERS**

I HEREBY CERTIFY THAT THE HOLMES COUNTY COMMISSIONERS HAVE APPROVED THE DETACHMENT OF THIS TRACT OF LAND AS SHOWN HEREON, FROM HOLMES COUNTY RESOLUTION #03-28-115

THIS 28<sup>th</sup> DAY OF March, 2011.

*[Signature]*  
 CHAIRMAN, COUNTY COMMISSIONERS

**APPROVAL OF THE MILLERSBURG PLANNING COMMISSION**

I HEREBY CERTIFY THAT THIS PLAT FOR ANNEXATION WAS APPROVED BY THE MILLERSBURG PLANNING COMMISSION AT A MEETING HELD ON THE

7<sup>th</sup> DAY OF JULY, 2010

*[Signature]*  
 PRESIDENT, MILLERSBURG PLANNING COMMISSION

201100071800  
 MILLERSBURG VILLAGE  
 MILLERSBURG OH

**APPROVAL OF THE MILLERSBURG VILLAGE COUNCIL**

I HEREBY CERTIFY THAT THIS PLAT ANNEXATION WAS APPROVED BY THE VILLAGE COUNCIL OF MILLERSBURG, OHIO AT A MEETING HELD ON THE 9<sup>th</sup> DAY OF

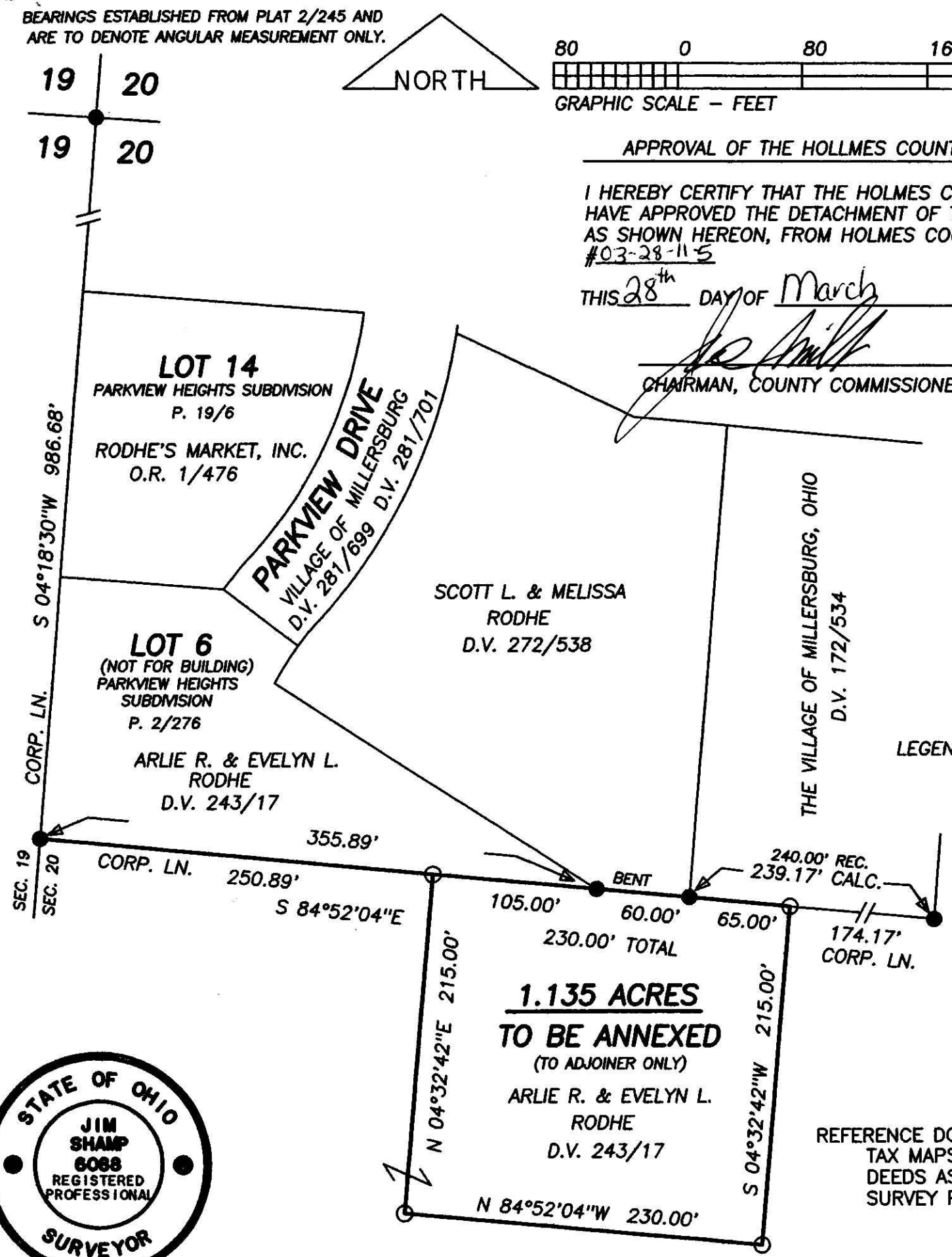
May, 2011. RESOLUTION # 2011-19  
 2011, ORDINANCE # \_\_\_\_\_

*[Signature]*  
 VILLAGE CLERK

I CERTIFY THIS PLAT & SURVEY TO BE CORRECT TO THE BEST OF MY KNOWLEDGE:

*[Signature]* 2/5/10  
 JIM SHAMP, REG. SUR. NO. S-6088 DATE

- LEGEND:
- = STONE FD.
  - = 5/8" RE-BAR FD. UNLESS NOTED
  - = POINT-OF-DEPARTURE
  - = 5/8" X 30" RE-BAR W/PLASTIC I.D. CAP SET
  - ⊗ = R/R SPIKE SET
  - △ = R/R SPIKE FD.



**1.135 ACRES TO BE ANNEXED**  
 (TO ADJOINER ONLY)

ARLIE R. & EVELYN L. RODHE  
 D.V. 243/17

PLAT APPROVED

3/25/2011 *[Signature]*

REFERENCE DOCUMENTS:  
 TAX MAPS  
 DEEDS AS SHOWN  
 SURVEY PLATS: 2/276, 5/25, 17/643, 19/6

**HEARTLAND SURVEYING, INC**

Jim Shamp  
 5210 T.R. 257 MILLERSBURG, OH 44654  
 PH: 330-674-4698 FAX: 330-674-0897

SURVEY		STATE	
SCOTT L. & MELISSA RODHE		OHIO	
COUNTY	TWP.	RNG.	TWP.
HOLMES	HARDY	7 W	9 N
SOUTHWEST QUARTER OF SECTION 20		JOB NO.	100204.CRD 100206.PL1

NOTE: PORTIONS OF THIS SURVEY WERE BASED ON PREVIOUSLY CONDUCTED SURVEYS - SEE PLATS LISTED IN REFERENCE DOCUMENTS.