

SCALE: 1" = 100'

- 5/8" REBAR FOUND UNLESS OTHERWISE NOTED
- 5/8" REBAR WITH I.D. CAP SET I.D. CAP MARKED "BAKER 6938"

REFERENCES:

DEED Vol. 193 PAGE 3
 O.R. Vol. 95 PAGE 66 B
 BEARINGS FROM PLAT Vol. 3 PAGE 67 B

Ⓐ CURTIS E. YODER, TRUSTEE and
 Rhonda J. YODER, TRUSTEE
 O.R. 197-1958



I CERTIFY THIS SURVEY TO BE CORRECT TO THE BEST OF MY KNOWLEDGE.

Donald C. Baker

DONALD C. BAKER P.S. 6938
 DONALD C. BAKER SURVEYING
 138 N. CLAY ST.
 MILLERSBURG, OHIO 44654
 PH. 330-674-4788

MARCH 1, 2002
 #5502-M.L. DAVIS
 F.C.C. - D.C. BAKER

REVISED APRIL 18, 2008
 NAMES VERIFIED 1-12-2011

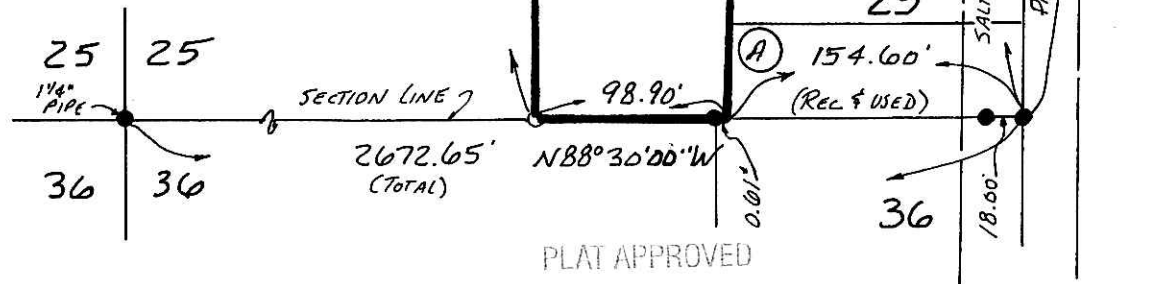
SALT CREEK TOWNSHIP
 S.E. QTR. SECTION 25
 T-15 N, R-12 W
 HOLMES COUNTY, OHIO
 (SURVEYED FOR: ANDY WEAVER)

FREEMAN R. and
 ARE D. MAST
 O.R. 190-1307

201100071518
 Filed for Record in
 HOLMES COUNTY, OH
 ANITA HALL, COUNTY RECORDER
 05-20-2011 At 02:12 pm.
 SMALL PLAT 40.00
 OR Book 19 Page 1845 - 1845

ORV 226 page 574

201100071518
 HOLMES COUNTY TITLE
 MILLERSBURG OH 44654



PLAT APPROVED

1/25/2011 s