

RETRACEMENT SURVEY OF O.R. 207-1146

RIPLEY TOWNSHIP
N.E. & N.W. QTRS. SECTION 2
T-17 N; R-14 W
HOLMES COUNTY, OHIO

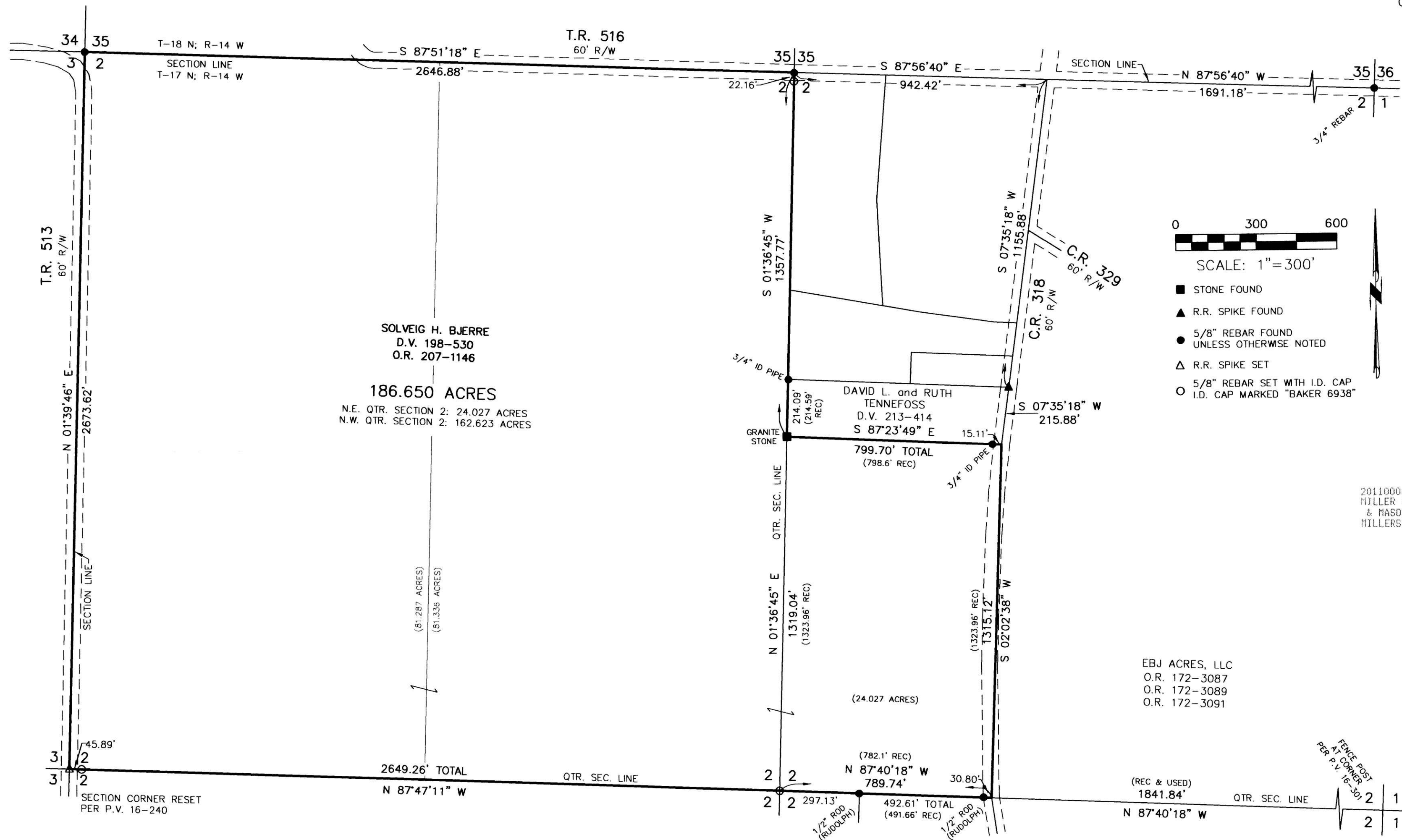
SURVEYED FOR: SOLVEIG BJERRE

REFERENCES

- DEED VOL. 213 PAGE 414
- O.R. VOL. 172 PAGE 3091
- O.R. VOL. 207 PAGE 1146
- PLAT VOL. 8 PAGE 764
- PLAT VOL. 15 PAGE 122
- PLAT VOL. 16 PAGES 240 & 301
- PLAT VOL. 17 PAGE 810
- PLAT VOL. 18 PAGE 158
- PLAT VOL. 19 PAGE 240
- BEARINGS FROM PLAT VOL. 19 PAGE 240

201100069832
Filed for Record in
HOLMES COUNTY, OH
ARITA HALL, COUNTY RECORDER
02-01-2011 AT 02:24 pm.
PLAT MED 43.20
OR Book 19 Page 1791 - 1791

CR 773p2653



0 300 600
SCALE: 1" = 300'

- STONE FOUND
- ▲ R.R. SPIKE FOUND
- 5/8" REBAR FOUND UNLESS OTHERWISE NOTED
- △ R.R. SPIKE SET
- 5/8" REBAR SET WITH I.D. CAP I.D. CAP MARKED "BAKER 6938"

201100069832
MILLER MAST
& MASON ATTYS
MILLERSBURG OH



I CERTIFY THIS SURVEY TO BE CORRECT TO THE BEST OF MY KNOWLEDGE.
Donald C. Baker
DONALD C. BAKER P.S. 6938
DATE: OCT. 11, 2010
FDB\ALG-CJG
FILE NAME: WORK4\S-390-10\ERZ

DONALD C. BAKER SURVEYING
138 N. CLAY STREET
MILLERSBURG, OHIO 44654
PH. 330-674-4788
FAX 330-674-6027

PLAT APPROVED
10/11/2010