

**ACCESS EASEMENT PLAT**  
**VILLAGE OF MILLERSBURG**  
**PLEASANT VIEW GLASS PLANT ADDITION**  
**PLAT VOL. 1 PG. 357-362**  
**HARDY TOWNSHIP**  
**1ST. QTR., LOT 42**  
**T-9 N; R-7 W**  
**HOLMES COUNTY OHIO**  
 SURVEYED FOR: ATTY. SAM STEIMEL

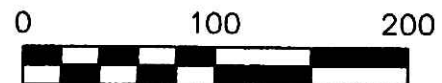
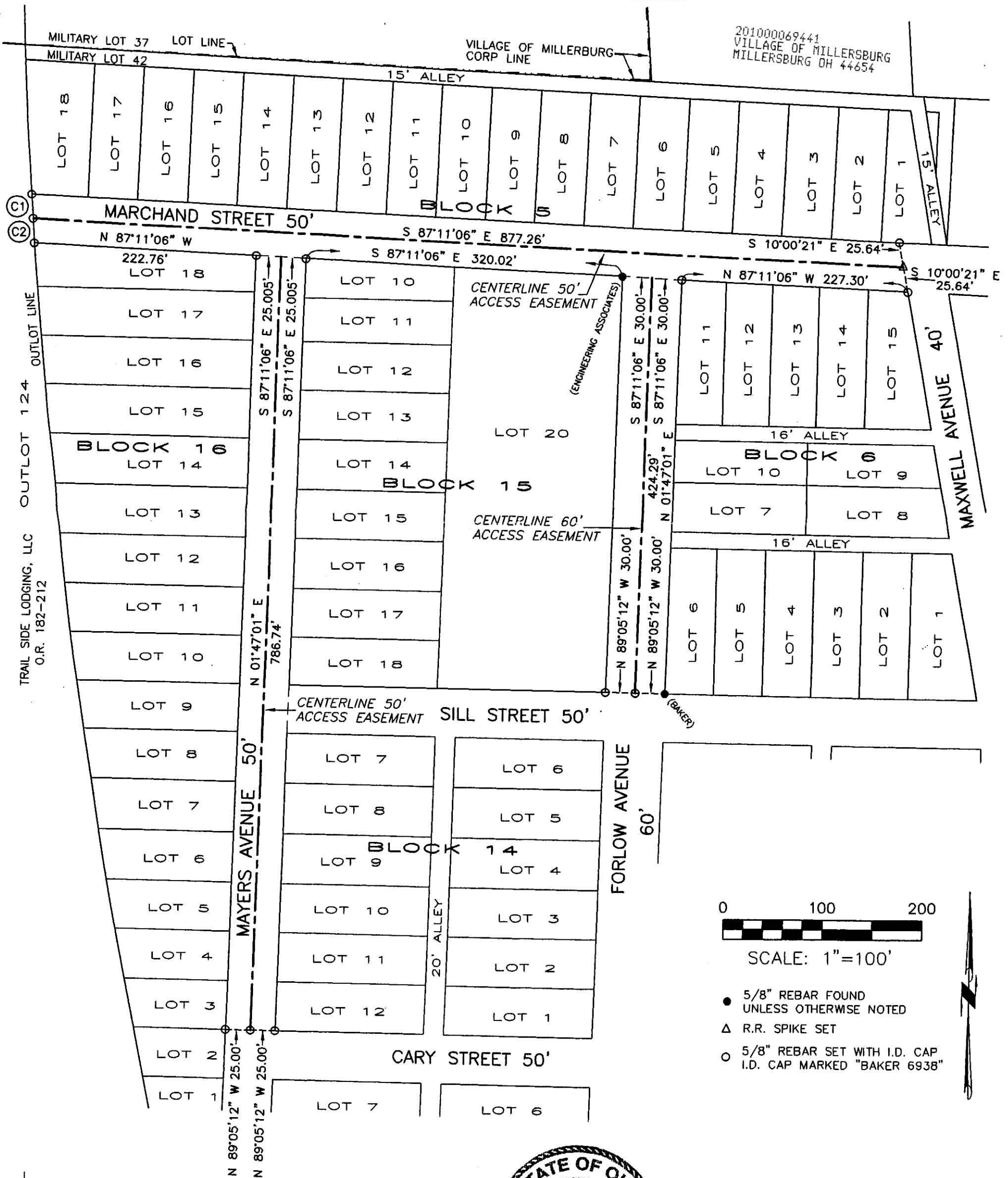
REFERENCES  
 UNRECORDED SURVEY OF BLOCK 5, LOT 14  
 BY JAMIE D. DARR DATED 4-8-2004.

Instrument 201000069441 OR  
 Book Page 19 1780

PLAT VOL. 2 PAGES 447 & 459  
 PLAT VOL. 9 PAGE 207  
 PLAT VOL. 12 PAGE 42  
 PLAT VOL. 13 PAGE 116  
 PLAT VOL. 14 PAGE 3  
 PLAT VOL. 17 PAGE 81  
 PLAT VOL. 18 PAGE 272  
 PLAT VOL. 19 PAGES 606 & 1212  
 BEARINGS FROM PLAT VOL. 19 PAGE 606

201000069441  
 Filed for Record in  
 HOLMES COUNTY, OH  
 ANITA HALL, COUNTY RECORDER  
 12-29-2010 At 03:11 PM.  
 SMALL PLAT 40.00  
 OR Book 19 Page 1780 - 1780  
 ORV 223 page 634

CURVE	DELTA ANGLE	RADIUS	ARC LENGTH	TANGENT	CHORD LENGTH	CHORD BEARING
C1	00°13'03"	6625.55'	25.15'	12.58'	25.15'	S 03°30'23" E
C2	00°13'03"	6625.55'	25.16'	12.58'	25.16'	N 03°43'27" W



SCALE: 1"=100'

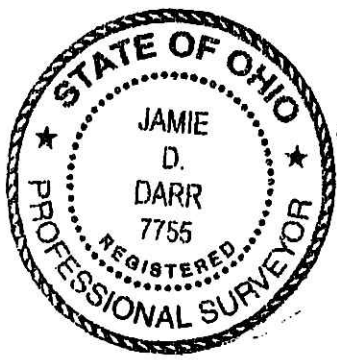
- 5/8" REBAR FOUND UNLESS OTHERWISE NOTED
- △ R.R. SPIKE SET
- 5/8" REBAR SET WITH I.D. CAP I.D. CAP MARKED "BAKER 6938"

DONALD C. BAKER SURVEYING  
 138 N. CLAY STREET  
 MILLERSBURG, OHIO 44654  
 PH. 330-674-4788  
 FAX 330-674-6027

PLAT APPROVED

*12/29/2010*

**Exhibit 24**



I CERTIFY THIS SURVEY TO BE CORRECT TO THE BEST OF MY KNOWLEDGE.  
*Jamie D. Darr*  
 JAMIE D. DARR P.S. 7755  
 DATE: MAY 24, 2010  
 JDD\ERZ-KES-CG  
 FILE NAME: WORK3\S-131A-10\ERZ