

BERLIN TOWNSHIP
4TH. QTR. LOT 21
T- 9N; R- 6W
HOLMES COUNTY, OHIO

(SURVEYED FOR: NETTIE MULLET)

RESURVEY OF A 4.6 AC. TRACT
 IN DEED VOL. 165 PAGE 461 &
 O.R. VOL. 37 PAGE 214



SCALE: 1" = 100'

- 5/8" RE BAR (UNLESS OTHERWISE NOTED) FO.
- 5/8" RE BAR WITH I.D. CAP SET
I.D. CAP MARKED "BAKER 6938"

REFERENCES:

DEED VOL. 255 PAGE 309
 DEED VOL. 239 PAGE 75
 DEED VOL. 165 PAGE 461

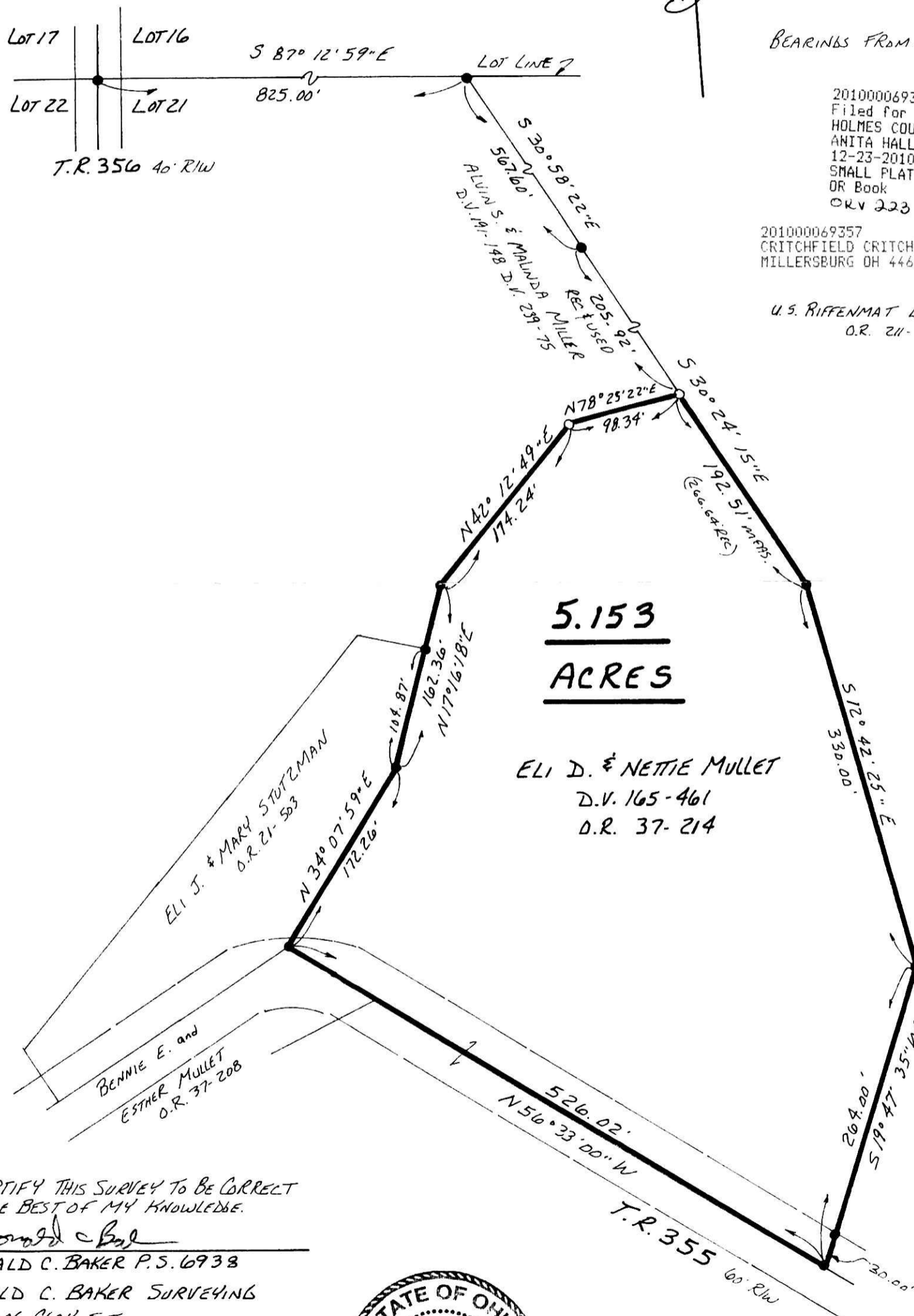
O.R. VOL. 37 PAGE 214

BEARINGS FROM PLAT VOL. 13 PAGE 154

201000069357
 Filed for Record in
 HOLMES COUNTY, OH
 ANITA HALL, COUNTY RECORDER
 12-23-2010 At 02:44 pm.
 SMALL PLAT 40.00
 OR Book 19 Page 1776 - 1776
 ORV 223 pg 307

201000069357
 CRITCHFIELD CRITCHFIELD & JOHNSTON
 MILLERSBURG OH 44654

U.S. RIFFENMAT LAND, LTD.
 O.R. 211-93



I CERTIFY THIS SURVEY TO BE CORRECT
 TO THE BEST OF MY KNOWLEDGE.

Donald C. Baker
 DONALD C. BAKER P.S. 6938
 DONALD C. BAKER SURVEYING
 138 N. CLAY ST.
 MILLERSBURG, OHIO 44654
 PH. 330-674-4788

MARCH 21, 2002
 REVISED DECEMBER 14, 2010 (#53610)
 #17202-M.L. DAVIS
 F.C.C. F.D. BAKER



PLAT APPROVED

12/22/2010 s