

RICHLAND TOWNSHIP  
 N.E. & N.W. QTRS. SECTION 17  
 T-8 N; R-8 W  
 HOLMES COUNTY, OHIO

SURVEYED FOR: CARRIE ALLISON

REFERENCES

DEED VOL. 61 PAGE 489  
 DEED VOL. 63 PAGE 63  
 DEED VOL. 77 PAGE 544  
 DEED VOL. 120 PAGE 569  
 DEED VOL. 144 PAGES 1 & 3  
 O.R. VOL. 132 PAGE 282  
 O.R. VOL. 174 PAGE 646  
 O.R. VOL. 199 PAGE 852  
 O.R. VOL. 211 PAGE 2002

PLAT VOL. 8 PAGES 221 & 398  
 PLAT VOL. 16 PAGE 644  
 PLAT VOL. 19 PAGE 1122  
 SURVEY RECORD 2 PAGE 378  
 BEARINGS FROM PLAT VOL. 16 PAGE 644

Instrument 201000064756 OR Book Page 19 1628

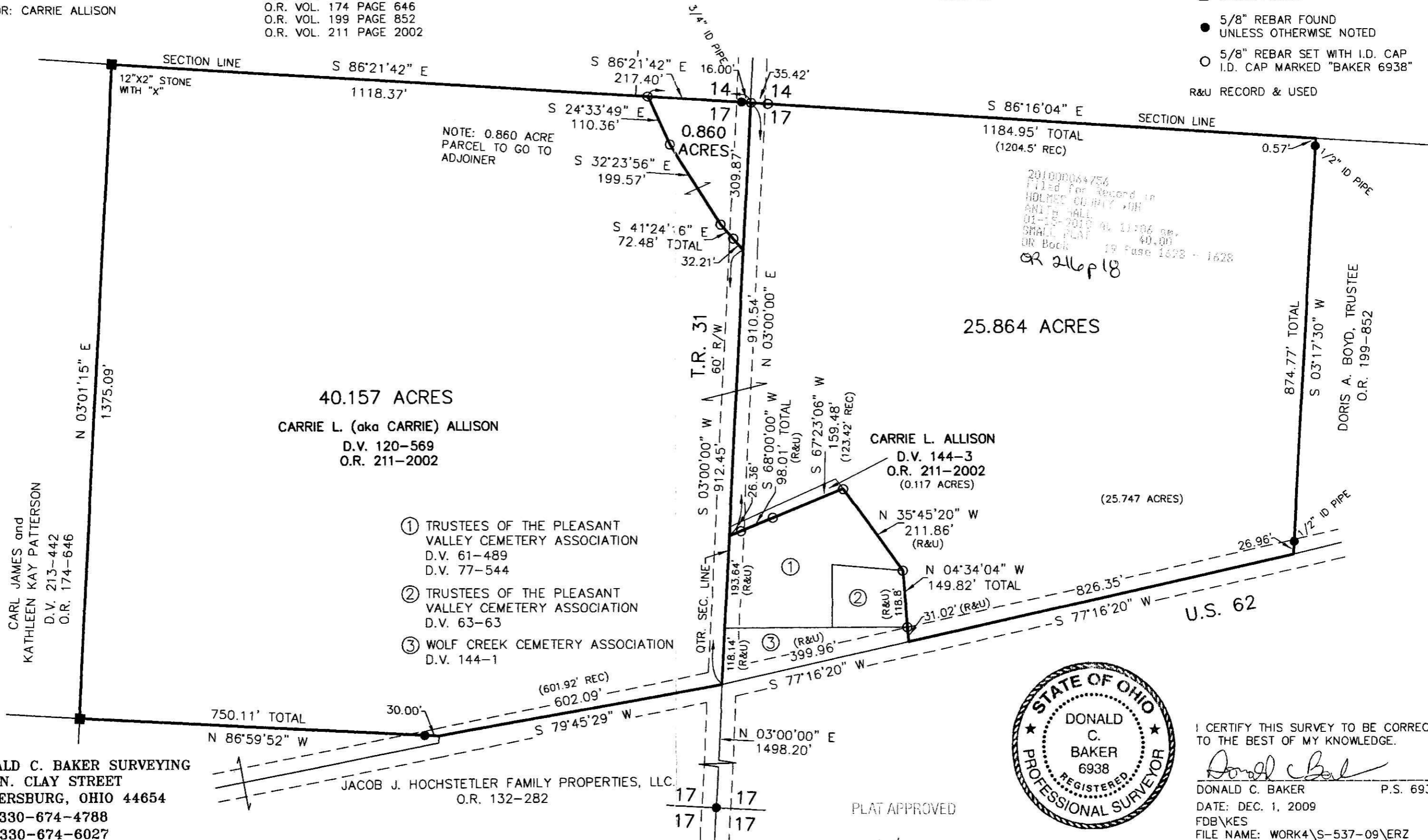
201000064756  
 HOLMES CTY  
 TITLE  
 MILLERSBURG OH

0 200 400



SCALE: 1"=200'

- STONE FOUND
  - 5/8" REBAR FOUND UNLESS OTHERWISE NOTED
  - 5/8" REBAR SET WITH I.D. CAP I.D. CAP MARKED "BAKER 6938"
- R&U RECORD & USED



40.157 ACRES  
 CARRIE L. (aka CARRIE) ALLISON  
 D.V. 120-569  
 O.R. 211-2002

25.864 ACRES

- ① TRUSTEES OF THE PLEASANT VALLEY CEMETERY ASSOCIATION  
 D.V. 61-489  
 D.V. 77-544
- ② TRUSTEES OF THE PLEASANT VALLEY CEMETERY ASSOCIATION  
 D.V. 63-63
- ③ WOLF CREEK CEMETERY ASSOCIATION  
 D.V. 144-1

CARRIE L. ALLISON  
 D.V. 144-3  
 O.R. 211-2002  
 (0.117 ACRES)

DONALD C. BAKER SURVEYING  
 138 N. CLAY STREET  
 MILLERSBURG, OHIO 44654  
 PH. 330-674-4788  
 FAX 330-674-6027

JACOB J. HOCHSTETLER FAMILY PROPERTIES, LLC.  
 O.R. 132-282



I CERTIFY THIS SURVEY TO BE CORRECT TO THE BEST OF MY KNOWLEDGE.  
 Donald C. Baker  
 DONALD C. BAKER P.S. 6938  
 DATE: DEC. 1, 2009  
 FDB\KES  
 FILE NAME: WORK4\S-537-09\ERZ

PLAT APPROVED

12/1/2009