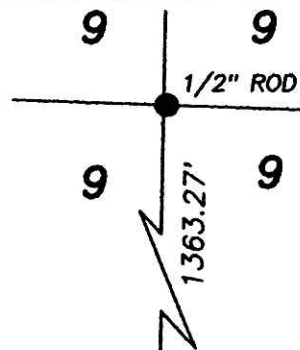


N 01°30'00"E 2690.53' TOTAL QTR. LN.



BEARINGS ARE TO AN ASSUMED MERIDIAN AND ARE TO DENOTE ANGULAR MEASUREMENT ONLY.

REFERENCE DOCUMENTS:

TAX MAPS  
DEEDS AS SHOWN  
SURVEY PLATS: SUR. REC. 1/85 & PLATS: 8/288,  
10/329, 10/891, 18/512

Instrument 201000064681 DR 19 1624  
201000064681  
Filed for Record in  
HOLMES COUNTY -OH  
ANITA HALL  
01-06-2010 At 12:32 pm.  
SMALL PLAT 40.00  
DR Book 19 Page 1624 - 1624  
CRV 215 pages 3127-3135  
RECORDERS SPACE

LOREN L. LANG D.V. 233/504

# HEARTLAND SURVEYING, INC

Jim Shamp

5210 T.R. 257 MILLERSBURG, OH 44654  
PH: 330-674-4698 FAX: 330-674-0897

SURVEY			STATE	
STEVEN H. & REGINA BIGLER			OHIO	
COUNTY	TWP.	RNG.	TWP.	
HOLMES	RIPLEY	17N	14W	
SOUTHWEST QUARTER OF THE SOUTHEAST QUARTER OF SECTION 9			JOB NO. 091201	

\* ALL OFFSETS SET AT 30.00'

201000064681  
JOHN BARRINGTON ATTORNEY  
PO BOX 624  
WOOSTER OH 44691

- LEGEND:
- = STONE FD.
  - = 5/8" RE-BAR FD. UNLESS NOTED
  - = POINT-OF-DEPARTURE
  - = 5/8" X 30" RE-BAR W/PLASTIC I.D. CAP SET
  - ⊗ = R/R SPIKE SET
  - △ = R/R SPIKE FD.

PLAT APPROVED

12/30/2009



I CERTIFY THIS PLAT & SURVEY TO BE CORRECT TO THE BEST OF MY KNOWLEDGE:

*Jim Shamp*  
JIM SHAMP, REG. SUR. NO. S-6088

12/16/09  
DATE

**11.500 ACRES**

**20.132 ACRES**

**8.368 ACRES**

STEVEN H. & REGINA BIGLER  
D.V.265/160  
D.V.273/853  
D.V.273/855  
D.V.277/990

C.R. 51  
60' R/W

731.20'

724.21' TOTAL

589.39' TOTAL

S 88°39'08"E 1313.60'

N 88°39'08"W  
645.98' TOTAL

596.06'

S 21°02'30"W  
109.27'

556.74' TOTAL

735.58'  
S 07°36'18"W 1231.01'

756.86' TOTAL

S 01°30'00"W 1325.61' REC. & USED  
(SEE S.R. 1/85)

3/4" RE-BAR FD.  
N 24°54'23"W 10.81'  
OF I.P. SET

1302.73'

N 88°43'27"W 2616.33' TOTAL QTR. LN.

1/2" I.D. PIPE FD.  
S 01°30'00"W  
7.00'  
OF I.P. SET  
FENCE POST 0.7' EAST OF I.P. SET

16

16

16

15

9

10

9

9

(SEE S.R. 1/85)  
1327.26' REC. & USED

731.20'

596.06'

16

9

731.20'

596.06'

16

9

731.20'

596.06'

16

9

731.20'

596.06'

16

9

731.20'

596.06'

16

9

731.20'

596.06'

16

9

731.20'

596.06'

16

9

731.20'

596.06'

16

9

731.20'

596.06'

16

9

731.20'

596.06'

16

9

731.20'

596.06'

16

9

731.20'

596.06'

16

9

731.20'

596.06'

16

9

731.20'

596.06'

16

9

731.20'

596.06'

16

9

731.20'

596.06'

16

9

731.20'

596.06'

16

9

731.20'

596.06'

16

9

731.20'

596.06'

16

9

731.20'

596.06'

16

9

731.20'

596.06'

16

9

731.20'

596.06'

16

9

731.20'

596.06'

16

9

731.20'

596.06'

16

9

731.20'

596.06'

16

9

731.20'

596.06'

16

9

731.20'

596.06'

16

9

731.20'

596.06'

16

9

731.20'

596.06'

16

9

731.20'

596.06'

16

9

731.20'

596.06'

16

9

731.20'

596.06'

16

9

731.20'

596.06'

16

9

731.20'

596.06'

16

9

731.20'

596.06'

16

9

731.20'

596.06'

16

9

731.20'

596.06'

16

9

731.20'

596.06'

16

9

731.20'

596.06'

16

9

731.20'

596.06'

16

9

731.20'

596.06'

16

9

731.20'

596.06'

16

9

731.20'

596.06'

16

9

731.20'

596.06'

16

9

731.20'

596.06'

16

9

731.20'

596.06'

16

9

731.20'

596.06'

16

9

731.20'

596.06'

16

9

731.20'

596.06'

16

9

731.20'

596.06'

16

9

731.20'

596.06'

16

9

731.20'

596.06'

16

9

731.20'

596.06'

16

9

731.20'

596.06'

16

9

731.20'

596.06'

16

9

731.20'

596.06'

16

9

731.20'

596.06'

16

9

731.20'

596.06'

16

9

731.20'

596.06'

16

9

731.20'

596.06'

16

9

731.20'

596.06'

16

9

731.20'

596.06'

16

9

731