

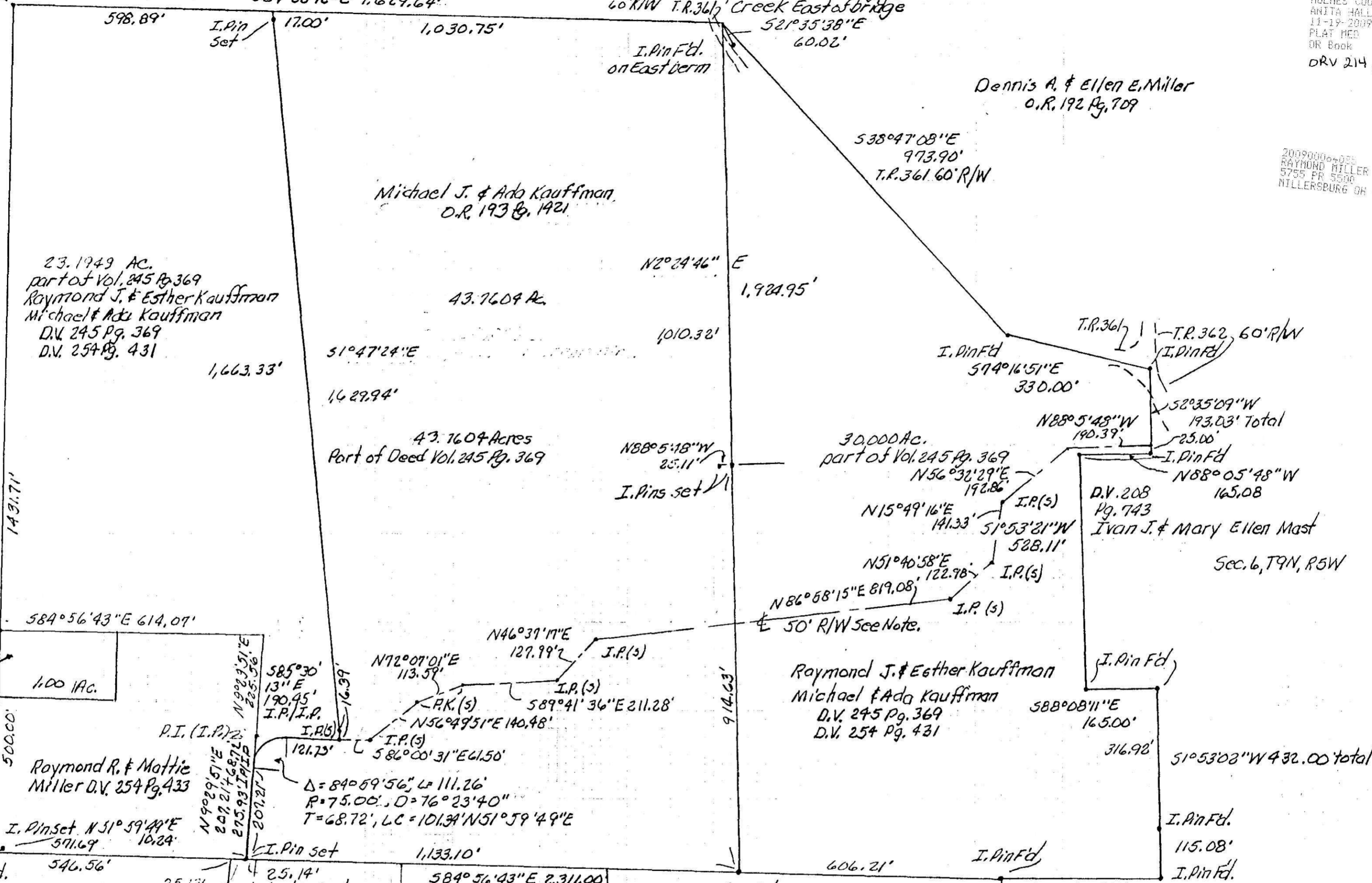
2009 0064085
 Filed for Record in
 HOLMES COUNTY, OH
 ANITA HALL
 11-19-2009 At 09:21 am.
 PLAT MED 42.20
 DR Book 19 Page 1602 - 1603
 DRV 214 page 3275

200900064085
 RAYMOND MILLER
 5755 FR 5500
 HILLERSBURG OH 44654

Lot 11, 1st Qtr., T9N, R6W
 Crist M. & Esther A. Miller
 Vol. 251 Pg. 29

I. Pin Fd. at N.W. corner
 of Lot 16, 1st Qtr., T9N, R6W
 584°38'12"E 1,629.64'

NORTH



Raymond Jr. & Leah Miller
 Lot 1 Broken Arrow
 Subdivision
 O.R. 165 Pg. 269
 P.B. 18-Pg. 733

23.1949 Ac.
 part of Vol. 245 Pg. 369
 Raymond J. & Esther Kauffman
 Michael & Ada Kauffman
 D.V. 245 Pg. 369
 D.V. 254 Pg. 431

Michael J. & Ada Kauffman
 O.R. 193 Pg. 1421

Dennis A. & Ellen E. Miller
 O.R. 192 Pg. 709

30.000 Ac.
 part of Vol. 245 Pg. 369

D.V. 208
 Pg. 743
 Ivan J. & Mary Ellen Mast

Raymond J. & Esther Kauffman
 Michael & Ada Kauffman
 D.V. 245 Pg. 369
 D.V. 254 Pg. 431

Raymond R. & Mattie Miller
 D.V. 254 Pg. 433

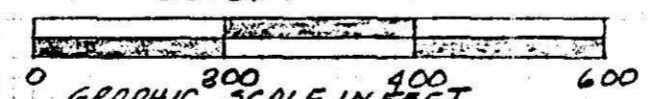
El J. & Dena Mast
 O.R. 193 Pg. 836

Atlee A. & Lizzie A. Raber
 Co-Trustees
 O.R. 35 Pg. 737
 O.R. 182 Pg. 265B

J. Mark & Anna Ruth Kaufman
 O.R. 193 Pg. 2546
 Coblenz Drive
 Subdivision, Lots
 P.B. 15 Pg. 103

Note: This original easement has since been designated as P.R.
 The remainder is an old drive used by local farmers to traverse from T.R. 359 to T.R. 362.

Scale: 1" = 200'



GRAPHIC SCALE IN FEET
 PLAT OF A SURVEY OF
 Deed Vol. 245 Pg. 369
 Known as part of Lot 16
 1st Qtr., T9N, R6W of
 Berlin Twp, Hol. Co., Ohio

Robert L. Kasner P.S. 5193
 P.E. 28820
 11/26/91, Revised 11/20/06 Revised 7/19/09

Robert L. Kasner P.E. P.S.



PLAT APPROVED

11/18/2009-5