

MECHANIC TOWNSHIP
S.E. QTR. SECTION 1
T-8 N; R-7 W
HOLMES COUNTY, OHIO

SURVEYED FOR: TREVOR LITTLETON

REFERENCES

O.R. VOL. 194 PAGE 1015
O.R. VOL. 204 PAGE 1531

PLAT VOL. 12 PAGE 565
PLAT VOL. 18 PAGE 404
PLAT VOL. 19 PAGE 914

BEARINGS FROM PLAT VOL. 18 PAGE 404

200900063833
Filed for Record in
HOLMES COUNTY, OH
ANITA HALL
11-02-2009 At 02:41 pm.
SMALL PLAT 40.00
OR Book 19 Page 1593 - 1593

Instrument
200900063833 OR
Book Page
19 1593

OR 214 PS 2050 +
2052

KAREN AHIJEVYCH
O.R. 124-838

N 74°51'00" E
605.32' TOTAL

2.900 ACRES
TO GO TO ADJOINER

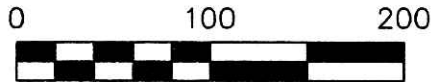
TREVOR S. LITTLETON
SHANNA M. McFARLAND
O.R. 204-1531

200900063833
HEARTLAND
TITLE
MILLERSBURG, OH

ARTHUR JAMES and
JOLANE YODER
D.V. 249-537
D.V. 262-754

2.100 ACRES

SAND RUN LEASING, LTD.
O.R. 194-1015

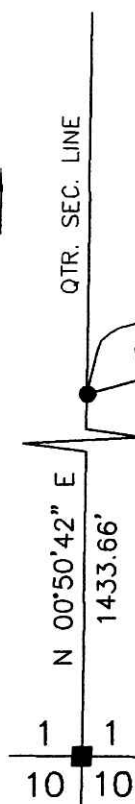


SCALE: 1"=100'

- STONE FOUND
- P.K. NAIL FOUND
- 5/8" REBAR FOUND
UNLESS OTHERWISE NOTED
- 5/8" REBAR SET WITH I.D. CAP
I.D. CAP MARKED "BAKER 6938"



DONALD C. BAKER SURVEYING
138 N. CLAY STREET
MILLERSBURG, OHIO 44654
PH. 330-674-4788
FAX 330-674-6027



I CERTIFY THIS SURVEY TO BE CORRECT
TO THE BEST OF MY KNOWLEDGE.

Donald C. Baker

DONALD C. BAKER P.S. 6938
DATE: SEPT. 29, 2009
FDB\ACB
FILE NAME: WORK4\S-458-09\ERZ

PLAT APPROVED

10/22/2009