

RETRACEMENT SURVEY OF TRACTS 1 & 2 OF O.R. 209-2792

HARDY TOWNSHIP
S.E. QTR. SECTION 14
T-9 N; R-6 W
HOLMES COUNTY, OHIO

REFERENCES

- DEED VOL. 231 PAGE 355
- O.R. VOL. 172 PAGE 2247
- O.R. VOL. 209 PAGES 2722 & 2792
- PLAT VOL. 2 PAGE 379
- PLAT VOL. 3 PAGE 18 B
- PLAT VOL. 10 PAGE 960
- PLAT VOL. 13 PAGE 88

SURVEYED FOR: S & S RENTALS

Instrument Book Page
200900062686 OR 19 1563

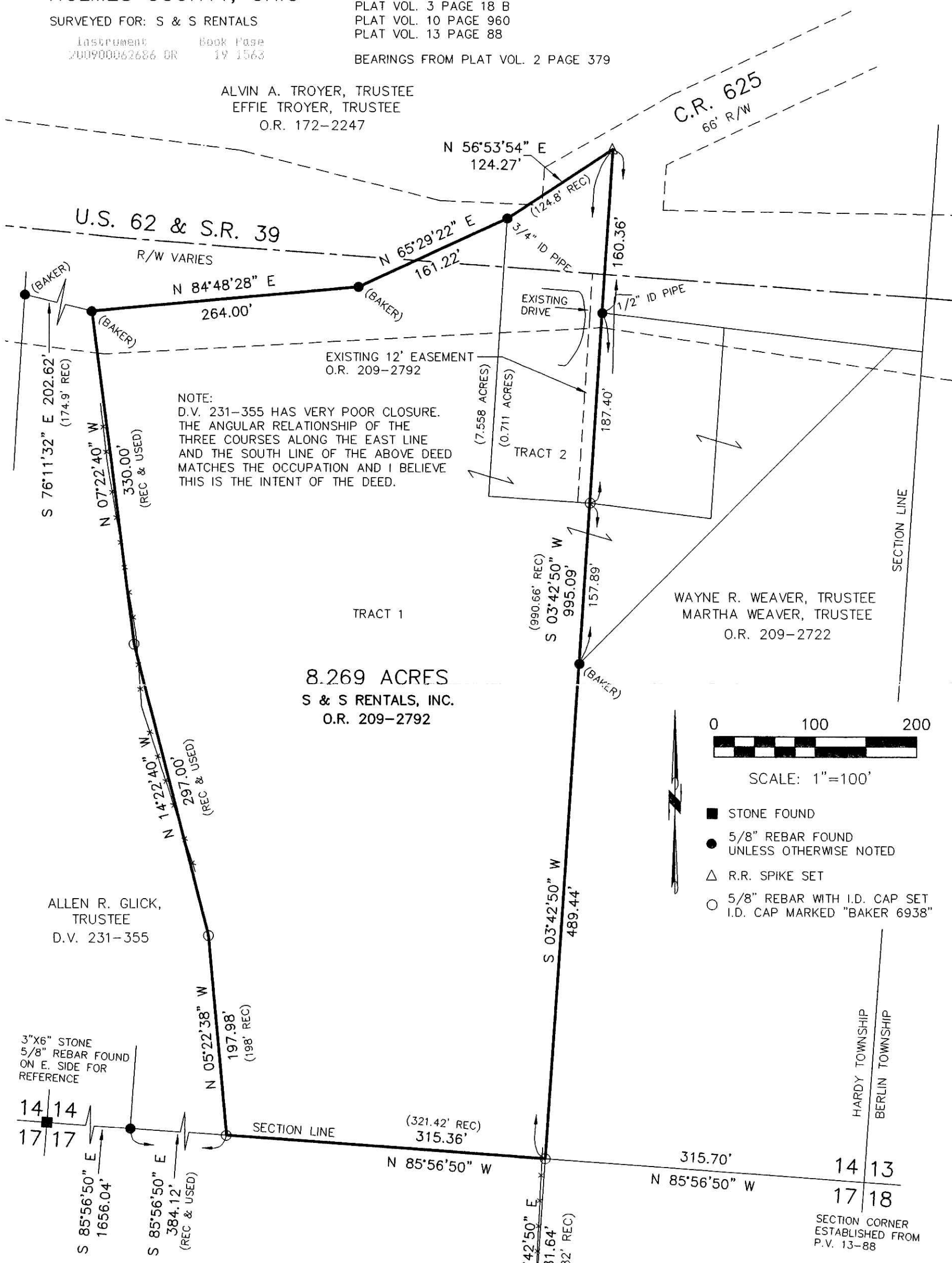
BEARINGS FROM PLAT VOL. 2 PAGE 379

ALVIN A. TROYER, TRUSTEE
EFFIE TROYER, TRUSTEE
O.R. 172-2247

200900062686
Filed for Record in
HOLMES COUNTY OH
GRITA HALL
08-11-2009 At 02:07 pm.
SMALL PLAT 40.00
OK Book 19 Page 1563 - 1563

200900062686
PAUL A
MILLER LAW
MILLERSBURG OH

OR 212 p 2561

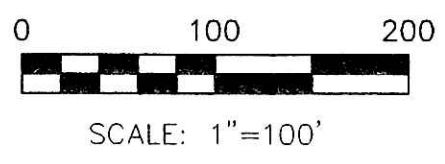


NOTE:
D.V. 231-355 HAS VERY POOR CLOSURE.
THE ANGULAR RELATIONSHIP OF THE
THREE COURSES ALONG THE EAST LINE
AND THE SOUTH LINE OF THE ABOVE DEED
MATCHES THE OCCUPATION AND I BELIEVE
THIS IS THE INTENT OF THE DEED.

WAYNE R. WEAVER, TRUSTEE
MARTHA WEAVER, TRUSTEE
O.R. 209-2722

8.269 ACRES
S & S RENTALS, INC.
O.R. 209-2792

ALLEN R. GLICK, TRUSTEE
D.V. 231-355



- STONE FOUND
- 5/8" REBAR FOUND UNLESS OTHERWISE NOTED
- △ R.R. SPIKE SET
- 5/8" REBAR WITH I.D. CAP SET I.D. CAP MARKED "BAKER 6938"

3"x6" STONE
5/8" REBAR FOUND
ON E. SIDE FOR
REFERENCE

14 14
17 17

SECTION CORNER
ESTABLISHED FROM
P.V. 13-88



I CERTIFY THIS SURVEY TO BE CORRECT
TO THE BEST OF MY KNOWLEDGE.

Donald C. Baker
DONALD C. BAKER P.S. 6938
DATE: JUNE 23, 2009

PLAT APPROVED
7-22-09 *JF*

DONALD C. BAKER SURVEYING
138 N. CLAY ST.
MILLERSBURG, OHIO, 44654
PH. 330-674-4788
FAX. 330-674-6027