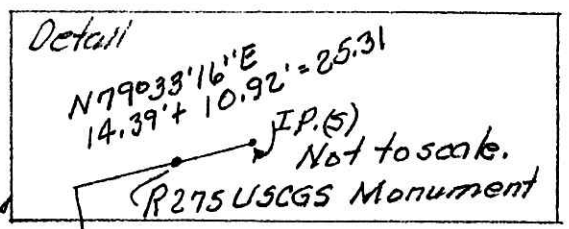


200900062678
 Filed for Record in
 HOLMES COUNTY, OH
 ANITA HALL
 08-11-2009 At 01:52 pm.
 SMALL PLAT 40.00
 OR Book 19 Page 1562 - 1562
 CR 212 p 2530



Approximate
 & T.R. 576
 R/W Unknown

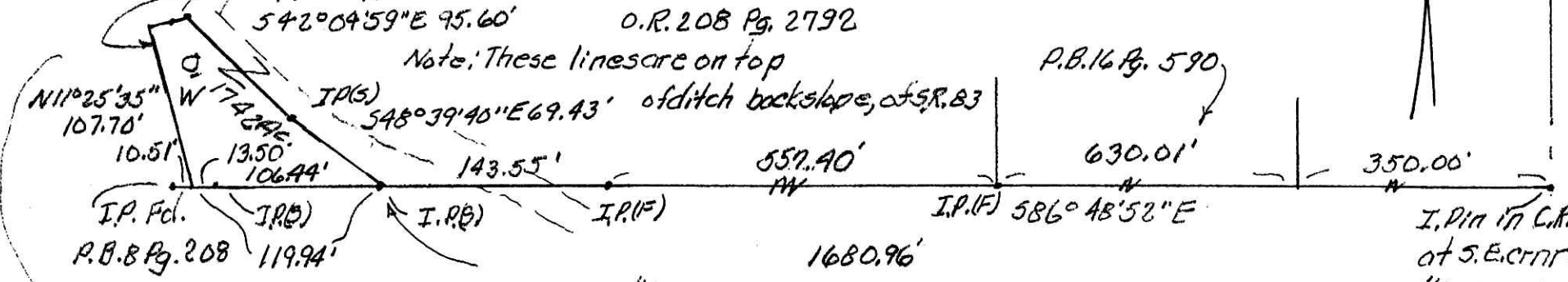
Roy A. & Barbara L. Miller
 Trustees

App. e/p of S.R. 83
 542°04'59\"E 95.60'

O.R. 208 Pg. 2792

Note: These lines are on top
 of ditch backslope, of S.R. 83

P.B. 16 Pg. 590



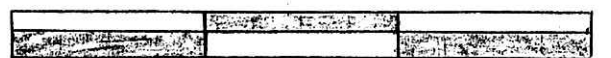
Mabel F. Wilson
 O.R. 199 Pg. 2321

N.W. 1/4 Sec. 3, T13N, R13W

PLAT APPROVED

I. Pin in C.R. 245
 at S.E. corner S.W.
 1/4 Sec. 34, T14N,
 R13W Prairie
 Twp., Holmes Co.,
 Ohio

6-25-09 *Jf*



Scale: 1" = 100'

Bearing basis: P.B. 16 Pg. 590
 Data used: P.B. 16 Pg. 590
 P.B. 7 Pg. 763
 P.B. 12 Pg. 779
 P.B. 8 Pg. 208
 O.R. 208 Pg. 2792

All set iron pins are 5/8" x 30" rebar
 I.D. cop RLK 5193



Plat of a survey for
 Martin Lemon in S.W.
 1/4 Sec. 34, T14N, R13W
 Prairie Twp., Holmes Co., Ohio.
 Robert L. Kasner P.E.P.S.
 7007 S.R. 39
 Millersburg, Ohio 44654
 330 674 9146
 5/09/09

Robert L. Kasner P.E.P.S.