

APPROVED FOR TRANSFER ONLY
 NO SUBDIVISION PLAT REQUIRED
 (O.R.C. 711.001 & 711.131
 Lot(s) not for building unless
 approved by Board of Health.
 HOLMES CO. PLANNING CC:

Instrument 200900062176 OR
 Book Page 19 1540

By JB Date 6-8-09

MONROE TOWNSHIP
 1ST. QTR., LOT 17
 T-9 N; R-8 W
 HOLMES COUNTY, OHIO

SURVEYED FOR: BONNIE VAUBEL

REFERENCES

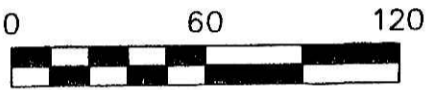
- DEED VOL. 183 PAGE 858
- DEED VOL. 261 PAGE 770
- O.R. VOL. 194 PAGE 2804
- PLAT VOL. 2 PAGE 136
- PLAT VOL. 7 PAGE 36
- PLAT VOL. 8 PAGE 562
- PLAT VOL. 10 PAGE 562
- PLAT VOL. 15 PAGE 37

BEARINGS FROM PLAT VOL. 15 PAGE 37

200900062176
 Filed for Record in
 HOLMES COUNTY, OH
 ANITA HALL
 07-07-2009 At 02:44 pm.
 SMALL PLAT 40.00
 OR Book 19 Page 1540 - 1540

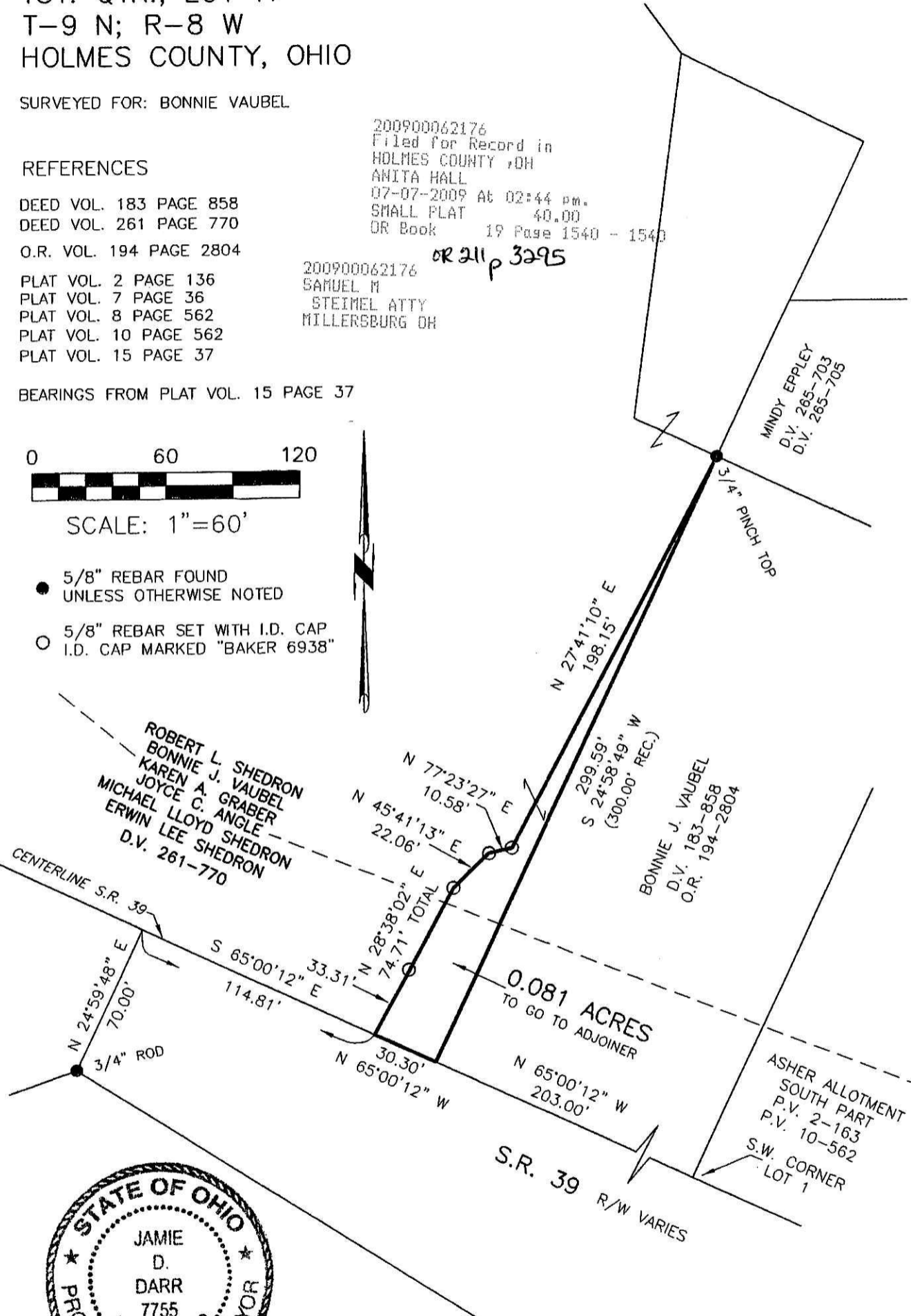
200900062176
 SAMUEL M
 STEIMEL ATTY
 MILLERSBURG OH

OR 211 p 3295



SCALE: 1"=60'

- 5/8" REBAR FOUND
UNLESS OTHERWISE NOTED
- 5/8" REBAR SET WITH I.D. CAP
I.D. CAP MARKED "BAKER 6938"



ROBERT L. SHEDRON
 BONNIE J. VAUBEL
 KAREN A. GRABER
 JOYCE C. ANGLE
 MICHAEL LLOYD SHEDRON
 ERWIN LEE SHEDRON
 D.V. 261-770

BONNIE J. VAUBEL
 D.V. 183-858
 O.R. 194-2804


ASHER ALLOTMENT
 SOUTH PART
 P.V. 2-163
 P.V. 10-562
 S.W. CORNER
 LOT 1



PLAT APPROVED
6-1-09 *JD*

I CERTIFY THIS SURVEY TO BE CORRECT
 TO THE BEST OF MY KNOWLEDGE.

Jamie D. Darr
 JAMIE D. DARR P.S. 7755
 DATE: APRIL 20, 2009
 JDD\ERZ
 FILE NAME: WORK3\S-105-09\ERZ


 DONALD C. BAKER SURVEYING
 138 N. CLAY STREET
 MILLERSBURG, OHIO 44654
 PH. 330-674-4788
 FAX 330-674-6027