

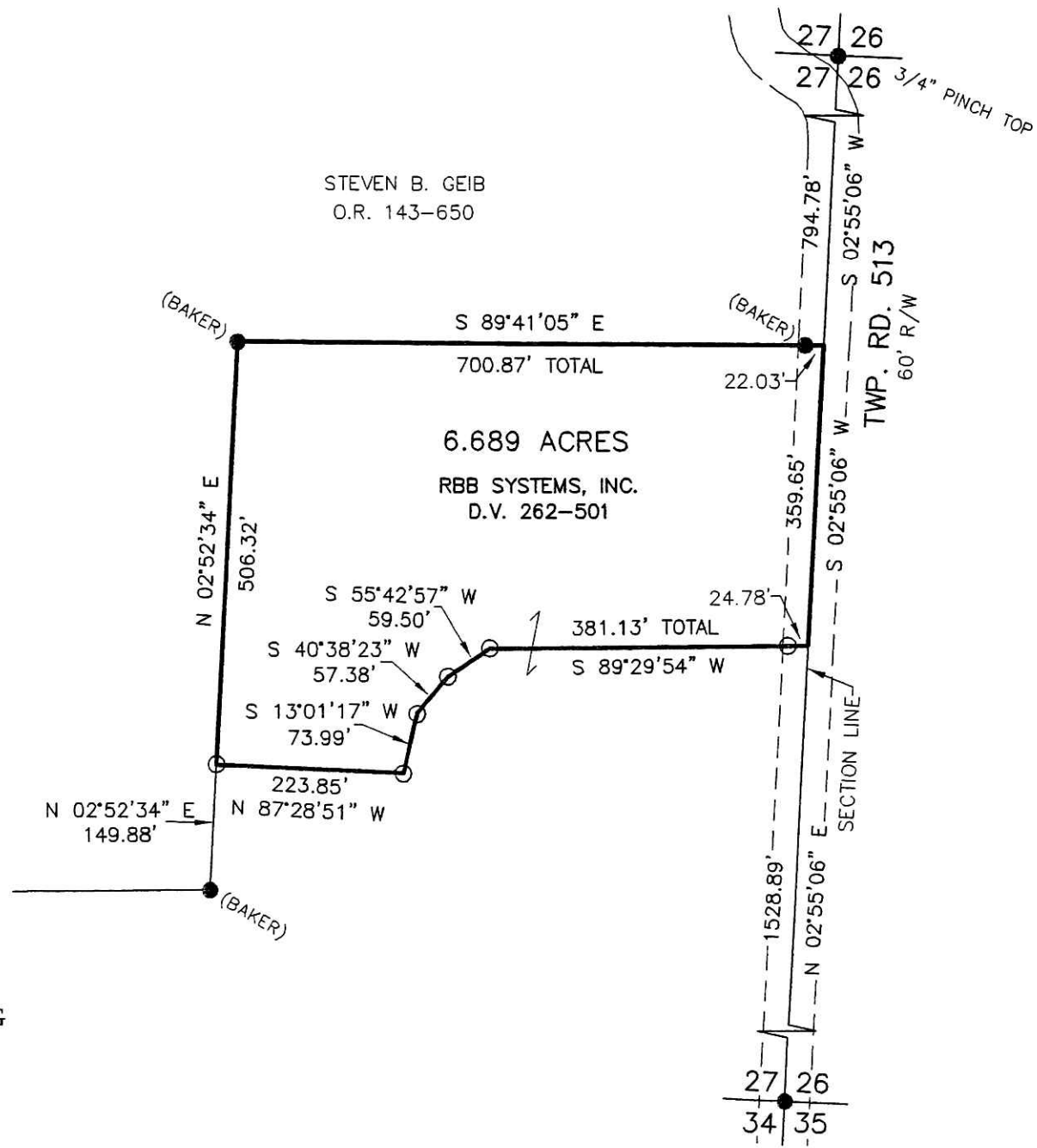
Book Page
19 1523
Instrument
200900061575 OR

RIPLEY TOWNSHIP
S.E. QTR. SECTION 27
T-18 N; R-14 W
HOLMES COUNTY, OHIO

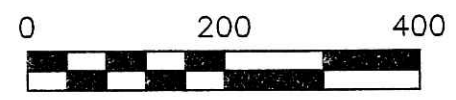
SURVEYED FOR: STEVE GEIB

STEVEN B. GEIB
O.R. 143-650

REFERENCES
DEED VOL. 262 PAGE 501
O.R. VOL. 143 PAGE 650
PLAT VOL. 18 PAGE 569
BEARINGS FROM PLAT VOL. 18 PAGE 569



200900061575
Filed for Record in
HOLMES COUNTY, OH
ANITA HALL
05-29-2009 At 02:39 pm.
SMALL PLAT 40.00
OR Book 19 Page 1523 - 1523
ORv 211 page 314



SCALE: 1"=200'

- 5/8" REBAR FOUND UNLESS OTHERWISE NOTED
- 5/8" REBAR WITH I.D. CAP SET I.D. CAP MARKED "BAKER 6938"

200900061575
HEARTLAND TITLE
MILLERSBURG OH 44654



I CERTIFY THIS SURVEY TO BE CORRECT TO THE BEST OF MY KNOWLEDGE.

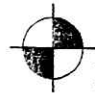
Donald C. Baker

DONALD C. BAKER P.S. 6938
DATE: APRIL 20, 2009

KES\ALG-AB
File Name: WORK2\S-130-09\ERZ

PLAT APPROVED

5/29/2009



DONALD C. BAKER SURVEYING
138 N. CLAY ST.
MILLERSBURG, OHIO, 44654
PH. 330-674-4788
FAX. 330-674-6027