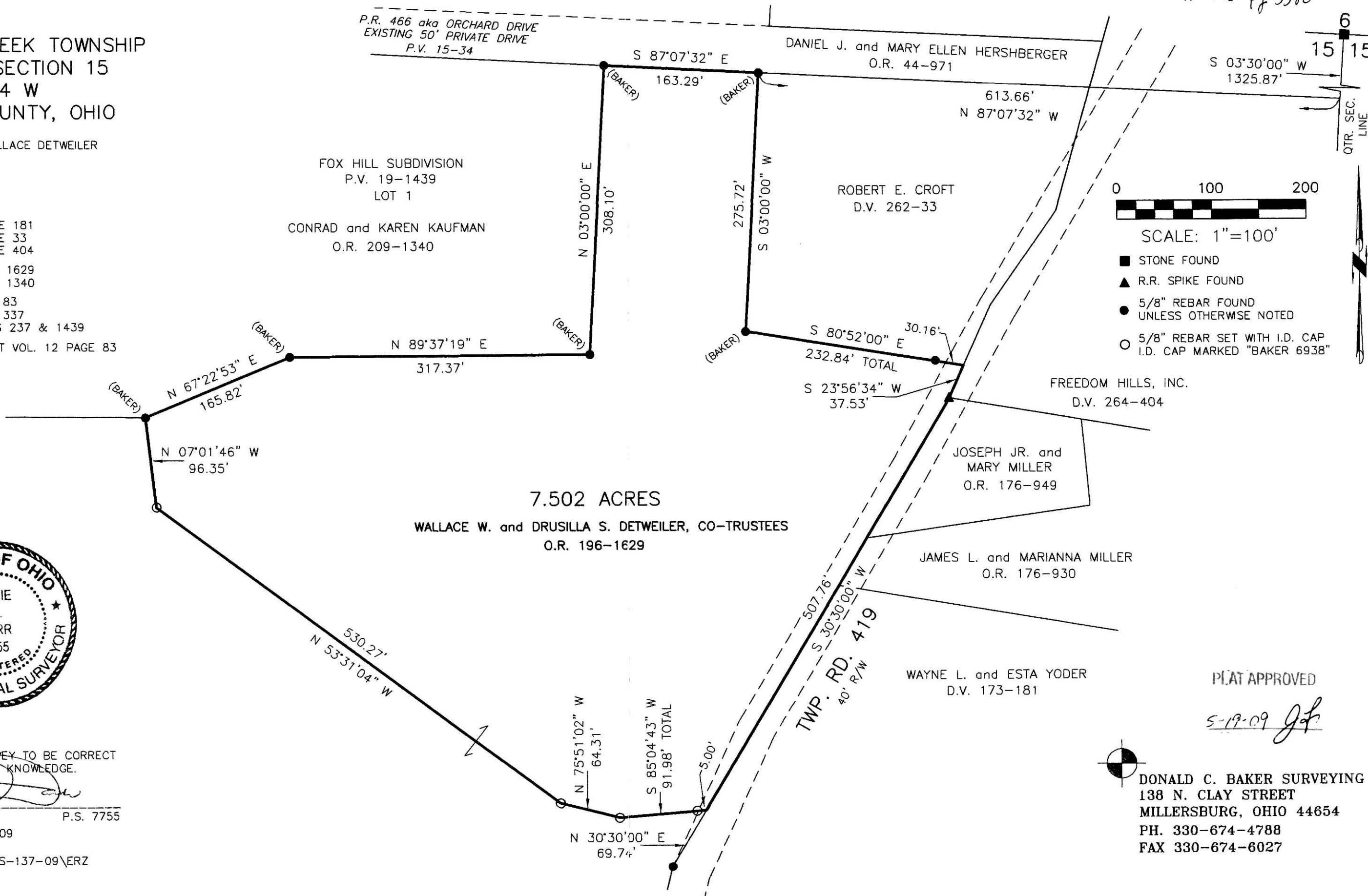


WALNUT CREEK TOWNSHIP
N.W. QTR. SECTION 15
T-9 N; R-4 W
HOLMES COUNTY, OHIO

SURVEYED FOR: WALLACE DETWEILER

REFERENCES


- DEED VOL. 173 PAGE 181
- DEED VOL. 262 PAGE 33
- DEED VOL. 264 PAGE 404
- O.R. VOL. 196 PAGE 1629
- O.R. VOL. 209 PAGE 1340
- PLAT VOL. 12 PAGE 83
- PLAT VOL. 14 PAGE 337
- PLAT VOL. 19 PAGES 237 & 1439
- BEARINGS FROM PLAT VOL. 12 PAGE 83



I CERTIFY THIS SURVEY TO BE CORRECT TO THE BEST OF MY KNOWLEDGE.

Jamie D. Darr
 JAMIE D. DARR P.S. 7755
 DATE: APRIL 22, 2009
 JDD\KES
 FILE NAME: WORK3\S-137-09\ERZ

PLAT APPROVED
 5-19-09 *JCD*

 DONALD C. BAKER SURVEYING
 138 N. CLAY STREET
 MILLERSBURG, OHIO 44654
 PH. 330-674-4788
 FAX 330-674-6027

Book Page 19 1519
Instrument 200900061480 OR