

SCALE: 1"=200'

- STONE FOUND
- 5/8" REBAR FOUND
UNLESS OTHERWISE NOTED
- 5/8" REBAR SET WITH I.D. CAP
I.D. CAP MARKED "BAKER 6938"

REFERENCES

O.R. VOL. 204 PAGE 1105
O.R. VOL. 208 PAGE 2792
PLAT VOL. 19 PAGE 349
BEARINGS FROM PLAT VOL. 19 PAGE 349

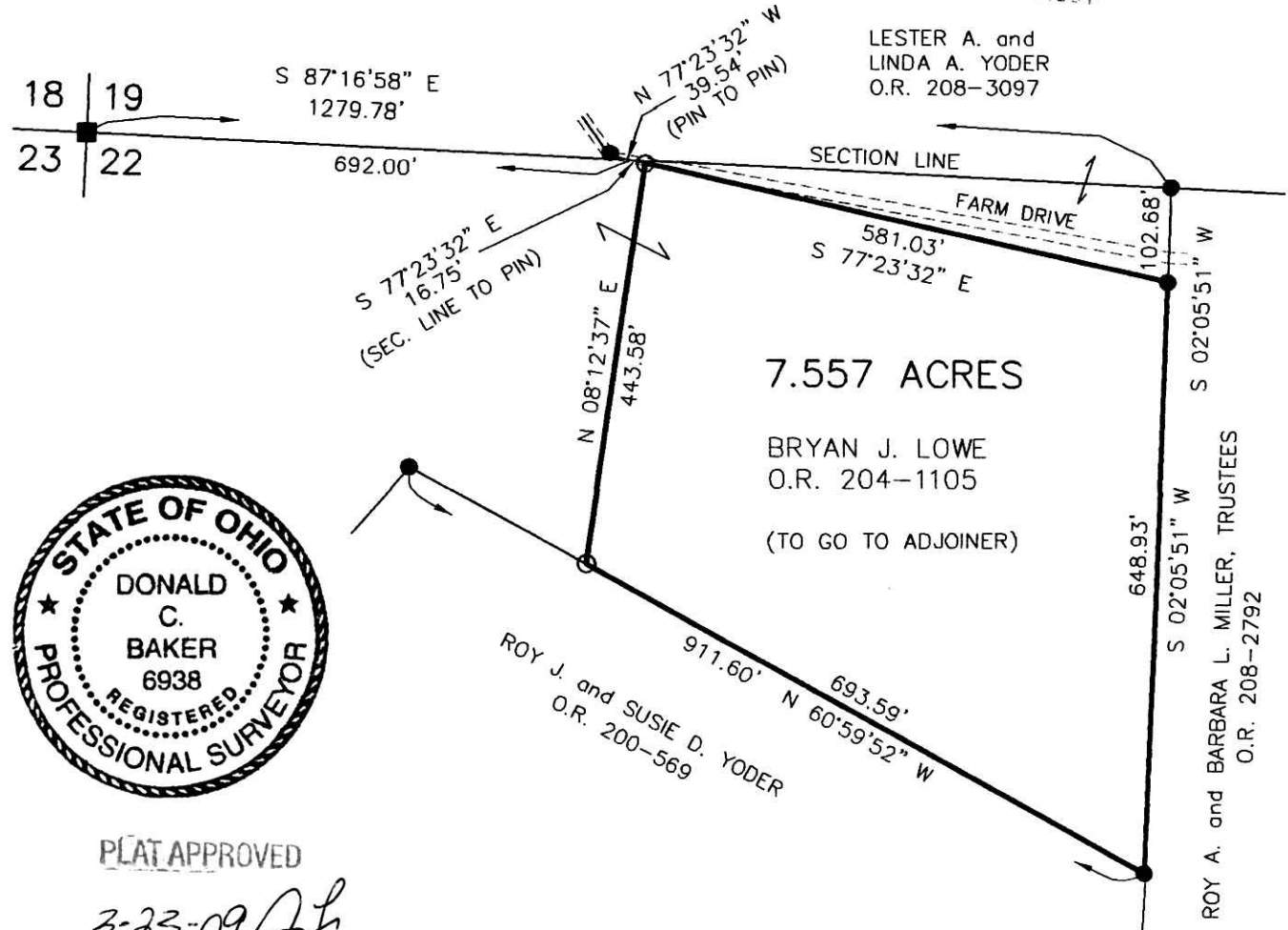
KILLBUCK TOWNSHIP
N.W. QTR. SECTION 22
T-8 N; R-8 W
HOLMES COUNTY, OHIO

SURVEYED FOR: CLYDE LOWE

200900060965
Filed for Record in
HOLMES COUNTY, OH
ANITA HALL
04-24-2009 At 12:20 pm.
SMALL PLAT 40.00
OR Book 19 Page 1504 - 1504
ORV 210 page 1191

200900060965
HOLMES COUNTY TITLE
MILLERSBURG OH 44654

LESTER A. and
LINDA A. YODER
O.R. 208-3097



By *DB* Date *3-26-09*

APPROVED FOR TRANSFER ONLY
NO SUBDIVISION PLAT REQUIRED
(O.R.C. 711.001 & 711.131)
Lot(s) not for building unless
approved by Board of Health,
HOLMES CO. PLANNING COMM.

I CERTIFY THIS SURVEY TO BE CORRECT
TO THE BEST OF MY KNOWLEDGE.

Donald C. Baker

DONALD C. BAKER P.S. 6938

DATE: MARCH 4, 2009

FDB/KES

FILE NAME: WORK4\S-46-09\MLD



PLAT APPROVED

3-23-09

DONALD C. BAKER SURVEYING
138 N. CLAY STREET
MILLERSBURG, OHIO 44654
PH. 330-674-4788
FAX 330-674-6027

ROY A. and BARBARA L. MILLER, TRUSTEES
O.R. 208-2792