

SALT CREEK TOWNSHIP
 N.E. QTR. SECTION 2
 T-14 N; R-12 W
 HOLMES COUNTY, OHIO

Instrument 200800059271 OR Book Page 19 1430

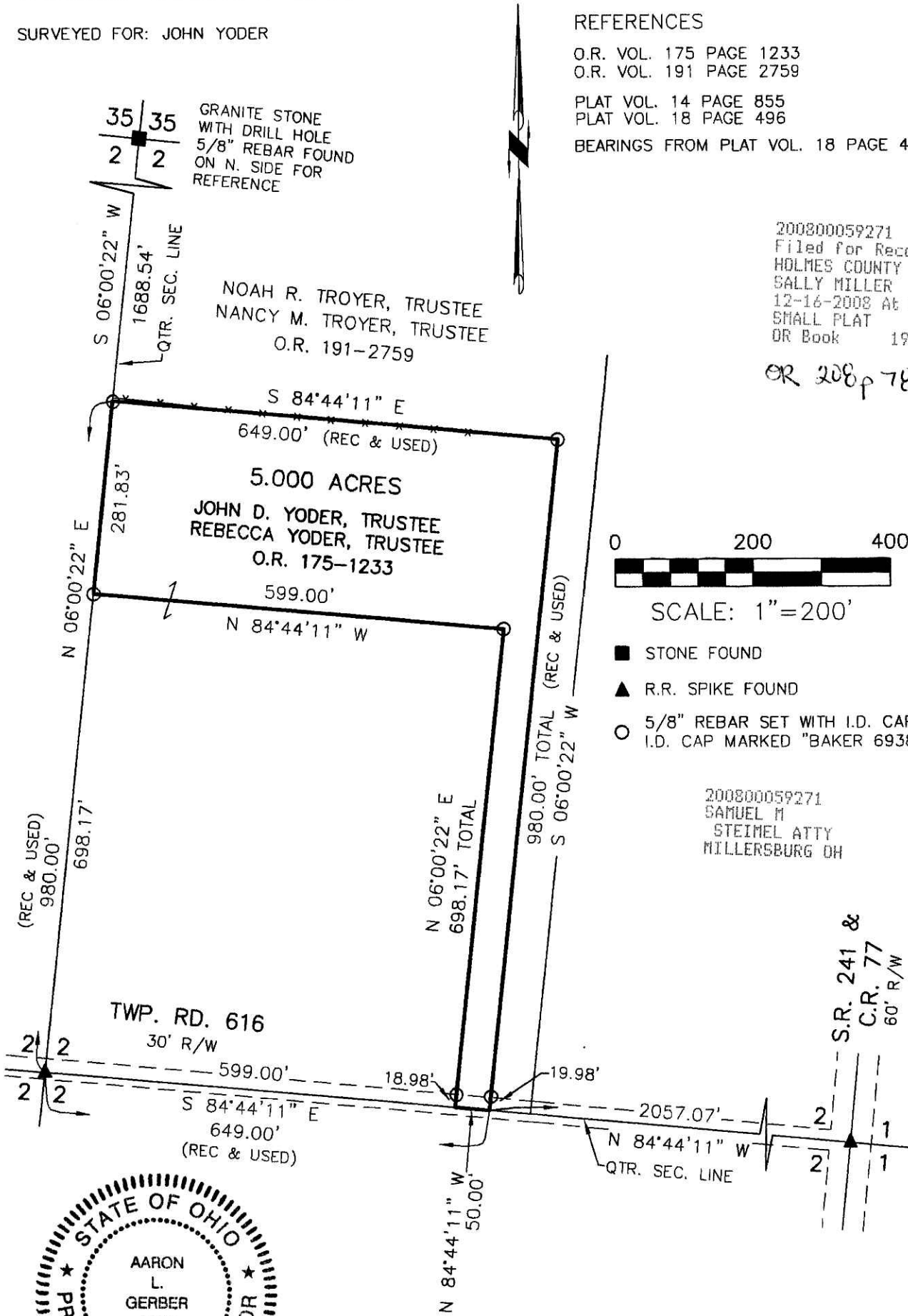
SURVEYED FOR: JOHN YODER

REFERENCES

- O.R. VOL. 175 PAGE 1233
- O.R. VOL. 191 PAGE 2759
- PLAT VOL. 14 PAGE 855
- PLAT VOL. 18 PAGE 496
- BEARINGS FROM PLAT VOL. 18 PAGE 496

200800059271
 Filed for Record in
 HOLMES COUNTY, OH
 SALLY MILLER
 12-16-2008 At 03:40 PM.
 SHALL PLAT 40.00
 OR Book 19 Page 1430 - 1430

OR 208 p 787



SCALE: 1" = 200'

- STONE FOUND
- ▲ R.R. SPIKE FOUND
- 5/8" REBAR SET WITH I.D. CAP
I.D. CAP MARKED "BAKER 6938"

200800059271
 SAMUEL M
 STEIMEL ATTY
 MILLERSBURG OH



I CERTIFY THIS SURVEY TO BE CORRECT TO THE BEST OF MY KNOWLEDGE.

A. L. Gerber

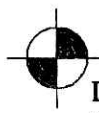
AARON L. GERBER P.S. 8379

DATE: OCT. 20, 2008

ALG\KES
 FILE NAME: WORK4\S-390-08\ERZ

PLAT APPROVED

11/13/2008



DONALD C. BAKER SURVEYING
 138 N. CLAY STREET
 MILLERSBURG, OHIO 44654
 PH. 330-674-4788
 FAX 330-674-6027