

PLAT OF CORRECTION

MECHANIC TOWNSHIP
N.E. QTR. SECTION 3
T-8 N; R-6 W
HOLMES COUNTY, OHIO

SURVEYED FOR: DAN RABER

Instrument 200800058580 OR Book Page 19 1402

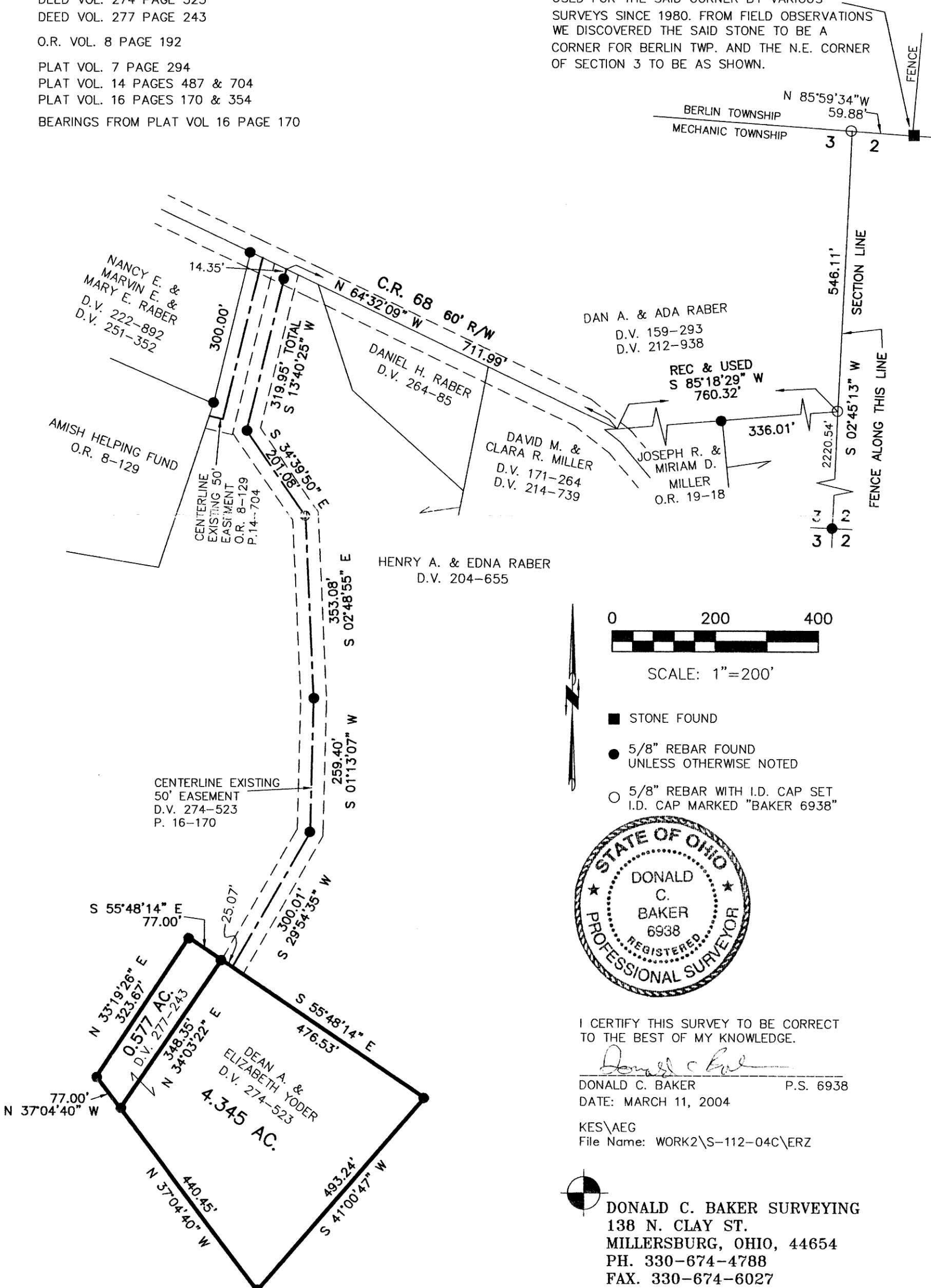
200800058580
Filed for Record in
HOLMES COUNTY, OH
SALLY MILLER
10-27-2008 At 02:27 pm.
SMALL PLAT 40.00
OR Book 19 Page 1402 - 1402
CRV 207 page 1693

200800058580
PAUL MILLER ATTY
MILLERSBURG OH

REFERENCES

- DEED VOL. 204 PAGE 655
- DEED VOL. 222 PAGE 892
- DEED VOL. 251 PAGE 352
- DEED VOL. 264 PAGE 85
- DEED VOL. 274 PAGE 523
- DEED VOL. 277 PAGE 243
- O.R. VOL. 8 PAGE 192
- PLAT VOL. 7 PAGE 294
- PLAT VOL. 14 PAGES 487 & 704
- PLAT VOL. 16 PAGES 170 & 354
- BEARINGS FROM PLAT VOL 16 PAGE 170

NOTE: PLAT VOL. 5 PAGE 142 (JULY 1972) AND PLAT VOL. 8 PAGE 785 (NOV. 1980) SHOWS THIS STONE AS BEING THE N.E. CORNER OF SECTION 3. THIS STONE HAS BEEN USED FOR THE SAID CORNER BY VARIOUS SURVEYS SINCE 1980. FROM FIELD OBSERVATIONS WE DISCOVERED THE SAID STONE TO BE A CORNER FOR BERLIN TWP. AND THE N.E. CORNER OF SECTION 3 TO BE AS SHOWN.



I CERTIFY THIS SURVEY TO BE CORRECT TO THE BEST OF MY KNOWLEDGE.

Donald C. Baker
DONALD C. BAKER P.S. 6938
DATE: MARCH 11, 2004

KES\AEG
File Name: WORK2\S-112-04C\ERZ

DONALD C. BAKER SURVEYING
138 N. CLAY ST.
MILLERSBURG, OHIO, 44654
PH. 330-674-4788
FAX. 330-674-6027

PLAT APPROVED

10/9/2008