



SCALE: 1"=200'

- 5/8" REBAR FOUND
UNLESS OTHERWISE NOTED
- 5/8" REBAR SET WITH I.D. CAP
I.D. CAP MARKED "BAKER 6938"
- △ R.R. SPIKE SET

HARDY TOWNSHIP
1ST. QTR., LOT 3
T-9 N; R-7 W
HOLMES COUNTY, OHIO

SURVEYED FOR: REAL ESTATE SHOWCASE

200800058235
HOLMES CTY
TITLE
MILLERSBURG OH

REFERENCES

- DEED VOL. 268 PAGE 924
- DEED VOL. 235 PAGE 116
- DEED VOL. 279 PAGE 620
- O.R. VOL. 5 PAGE 503
- O.R. VOL. 98 PAGE 46
- O.R. VOL. 168 PAGE 888
- O.R. VOL. 168 PAGE 893
- PLAT VOL. 15 PAGE 40
- PLAT VOL. 4 PAGE 160
- PLAT VOL. 9 PAGE 66

BEARINGS FROM PLAT VOL. 15 PAGE 40

200800058235
Filed for Record in
HOLMES COUNTY, OH
SALLY MILLER
10-03-2008 At 02:14 pm.
SMALL PLAT 40.00
DR Book 19 Page 1393 - 1393

OR 207 Pgs 328 + 330



THOMAS E. AMES
D.V. 235-116
D.V. 279-620
O.R. 98-46

CRC LAND COMPANY, LTD.
O.R. 5-503

MARVIN A. and IRENE MILLER
D.V. 268-924

SUZANNE GWEN GALLION
O.R. 168-888
O.R. 168-893

I CERTIFY THIS SURVEY TO BE CORRECT
TO THE BEST OF MY KNOWLEDGE.

JAMIE D. DARR P.S. 7755

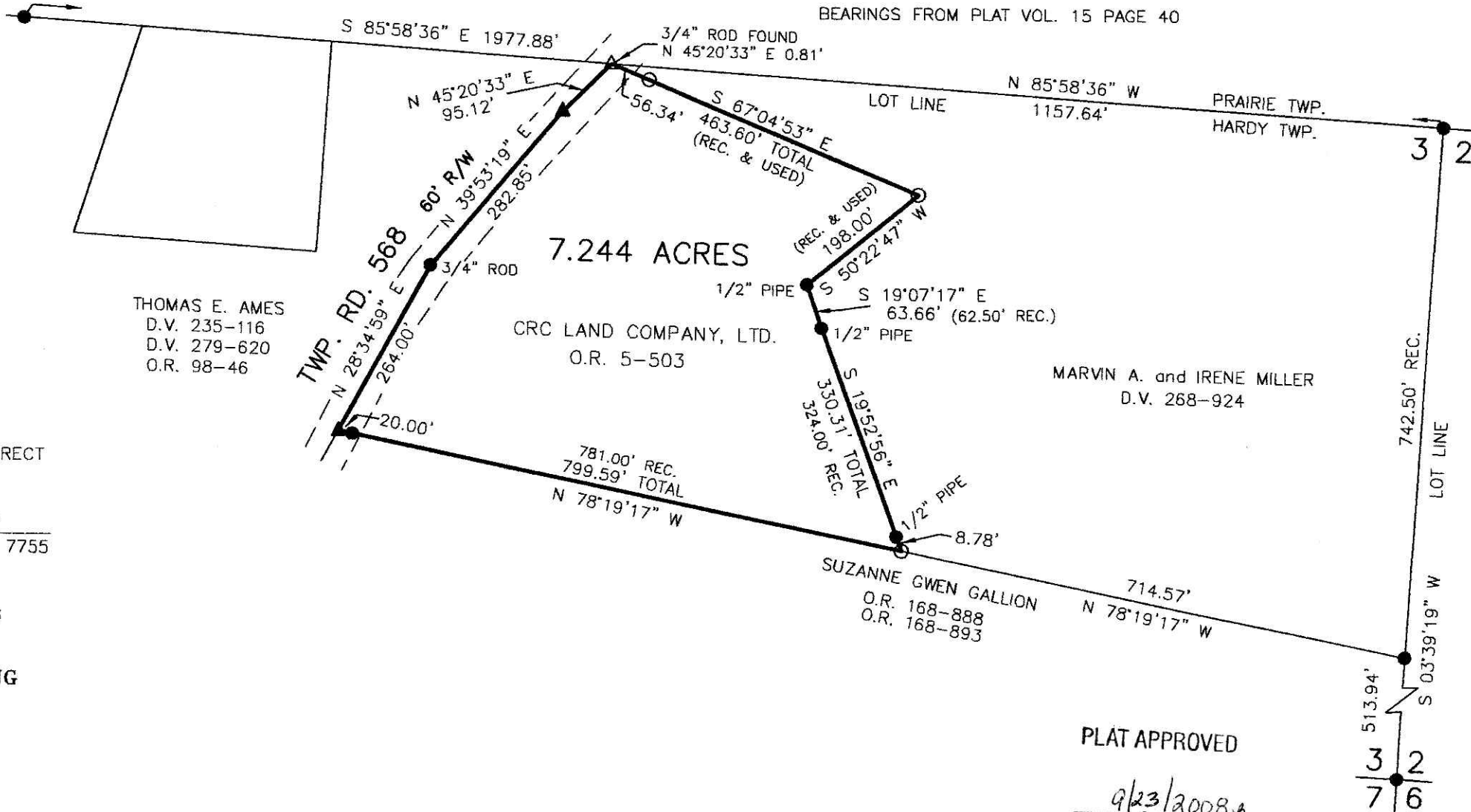
DATE: SEPT. 5, 2008

JDD\ALG
FILE NAME: WORK4\S-444-08\ALG

DONALD C. BAKER SURVEYING
138 N. CLAY STREET
MILLERSBURG, OHIO 44654
PH. 330-674-4788
FAX 330-674-6027

PLAT APPROVED

9/23/2008



Instrument 200800058235 DR Book Page 19 1393