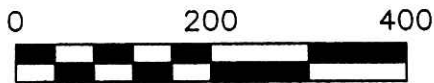


PRAIRIE TOWNSHIP
N.E. QTR. SECTION 11
T-13 N; R-13 W
HOLMES COUNTY, OHIO

SURVEYED FOR: LEVI WEAVER



SCALE: 1"=200'

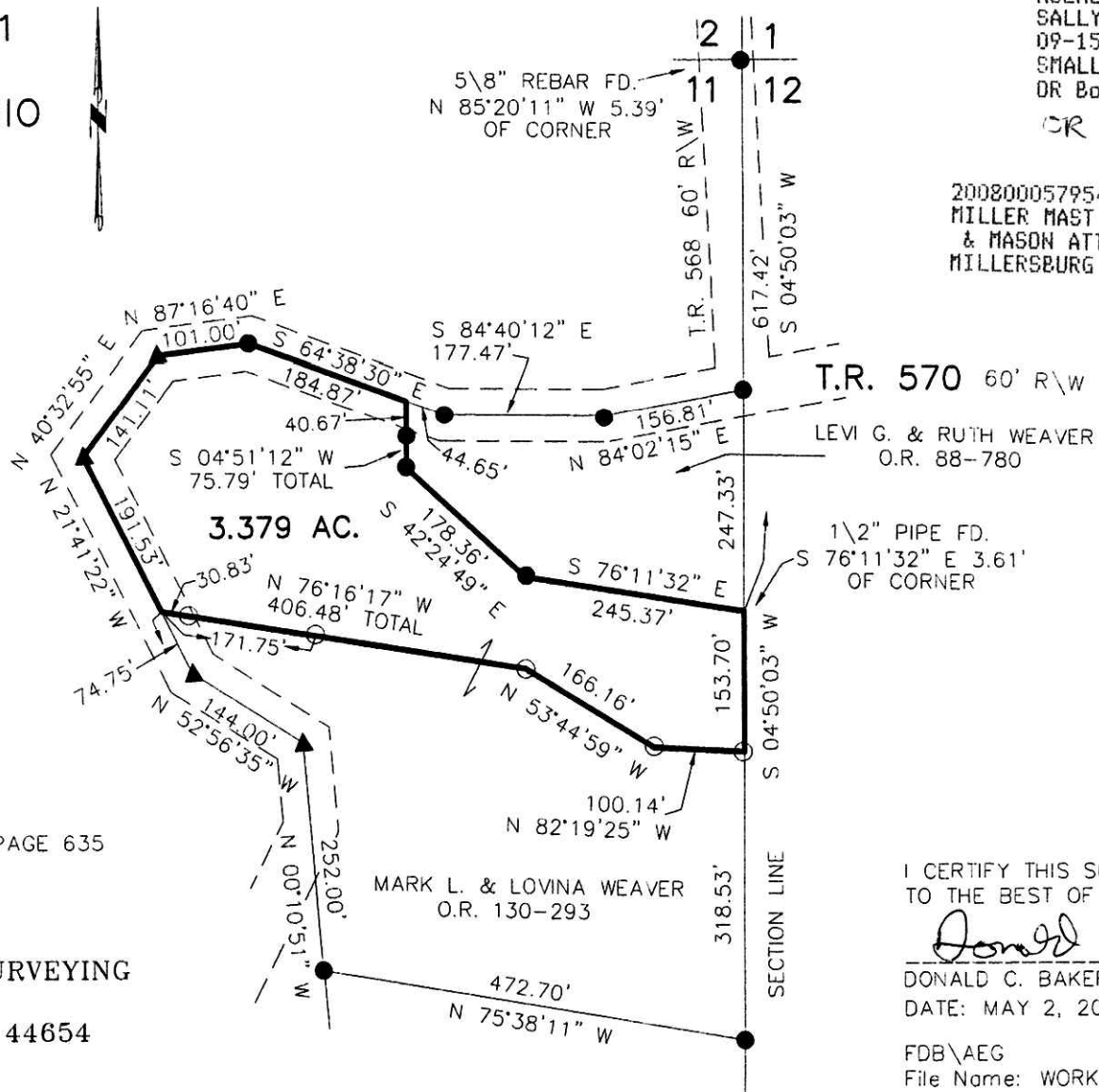
- 5/8" REBAR FOUND UNLESS OTHERWISE NOTED
- 5/8" REBAR WITH I.D. CAP SET I.D. CAP MARKED "BAKER 6938"

REFERENCES

O.R. VOL. 130 PAGE 293
PLAT VOL. 12 PAGE 635
BEARINGS FROM PLAT VOL 12 PAGE 635



DONALD C. BAKER SURVEYING
138 N. CLAY ST.
MILLERSBURG, OHIO, 44654
PH. 330-674-4788
FAX. 330-674-6027



200800057954
Filed for Record in
HOLMES COUNTY, OH
SALLY MILLER
09-15-2008 At 02:47 pm.
SMALL PLAT 40.00
OR Book 19 Page 1385 - 1385

OR 206p 2593

200800057954
MILLER MAST
& MASON ATTYS
MILLERSBURG OH



I CERTIFY THIS SURVEY TO BE CORRECT TO THE BEST OF MY KNOWLEDGE.

Donald C Baker

DONALD C. BAKER P.S. 6938
DATE: MAY 2, 2005

FDB\AEG
File Name: WORK2\S-227-05

PLAT APPROVED

9/25/2006