

MECHANIC TOWNSHIP
 N.E. QTR. SECTION 13
 T-8 N; R-6 W
 HOLMES COUNTY, OHIO

SURVEYED FOR: WKLM RADIO

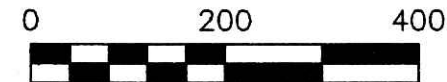
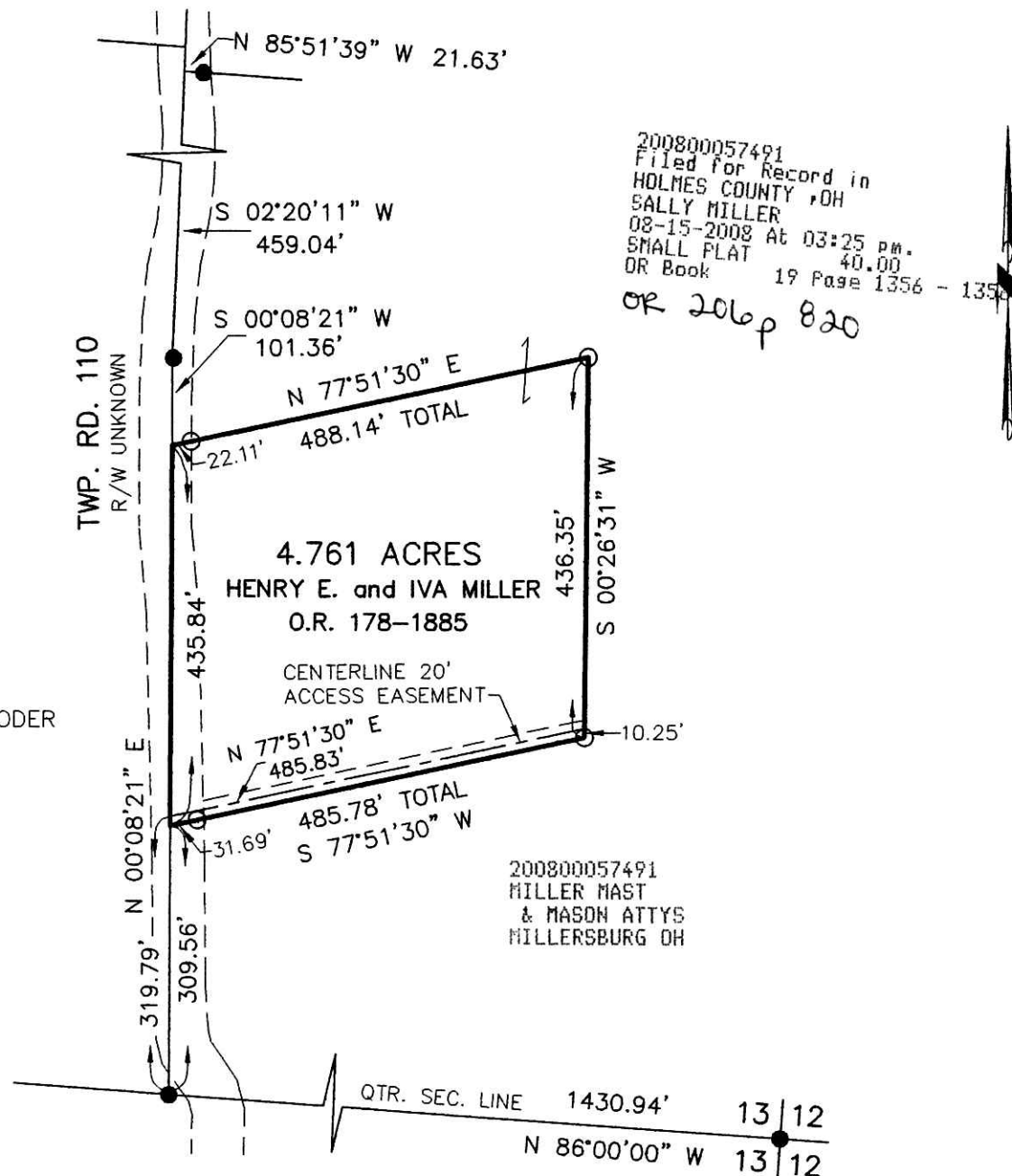
REFERENCES

- DEED VOL. 258 PAGE 159
- O.R. VOL. 178 PAGE 1885
- PLAT VOL. 18 PAGE 797
- BEARINGS FROM PLAT VOL 18 PAGE 797

ELI D.S. and FANNIE YODER
 D.V. 258-159



DONALD C. BAKER SURVEYING
 138 N. CLAY ST.
 MILLERSBURG, OHIO, 44654
 PH. 330-674-4788
 FAX. 330-674-6027



SCALE: 1"=200'

- 5/8" REBAR FOUND UNLESS OTHERWISE NOTED
- 5/8" REBAR WITH I.D. CAP SET I.D. CAP MARKED "BAKER 6938"



Instrument
 200800057491 OR
 Book Page
 19 1356

I CERTIFY THIS SURVEY TO BE CORRECT
 TO THE BEST OF MY KNOWLEDGE.

Donald C. Baker
 DONALD C. BAKER P.S. 6938
 DATE: JUNE 10, 2008

FDB\WMB
 File Name: WORK2\S-263-07\ERZ

PLAT APPROVED

8/5/2008