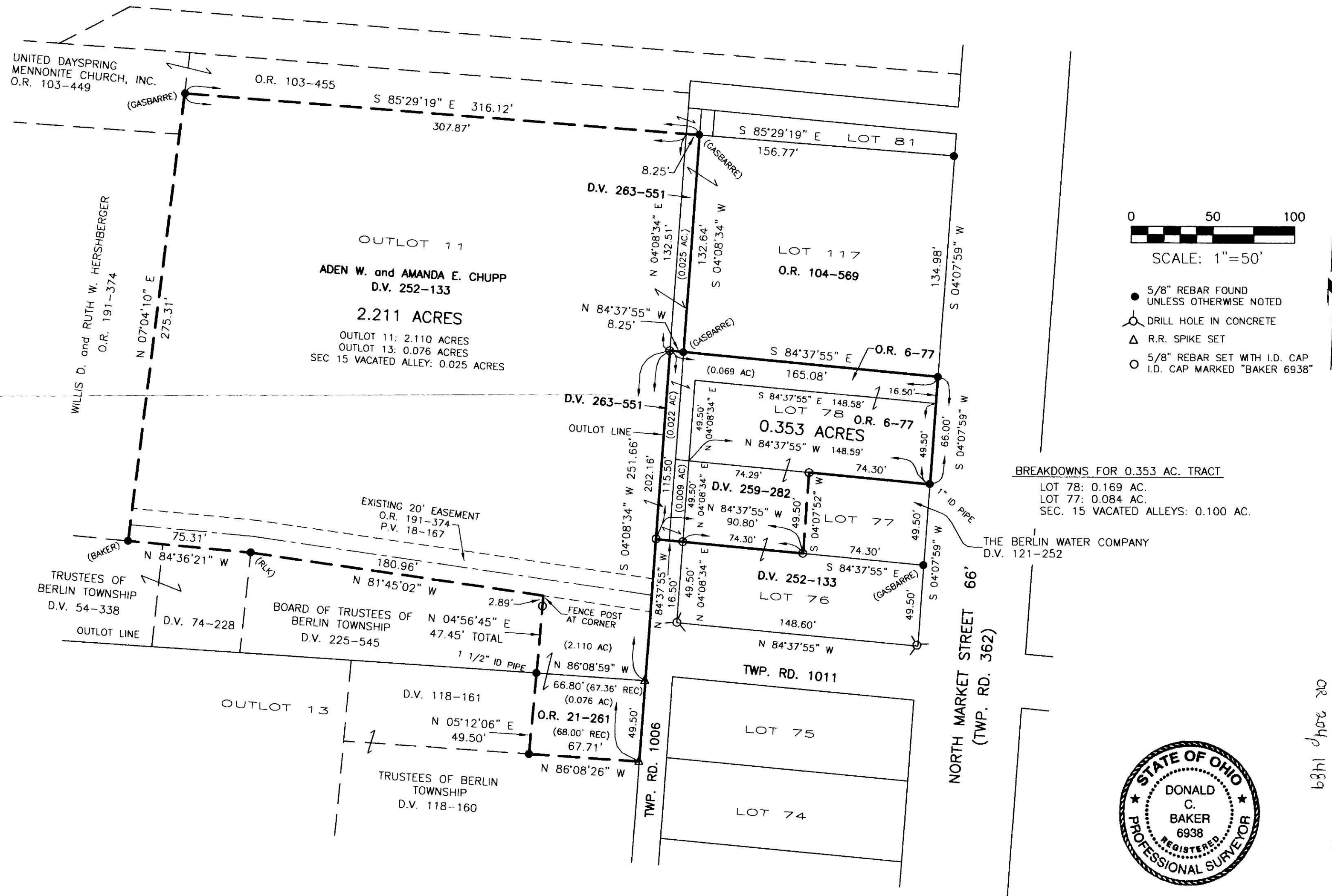


VILLAGE OF BERLIN  
PART OF OUTLOTS 11 & 13  
LOT 78 and PART OF LOT 77

BERLIN TOWNSHIP  
N.W. QTR. SECTION 15  
T-9 N; R-5 W  
HOLMES COUNTY, OHIO

SURVEYED FOR: ADEN CHUPP

- REFERENCES
- DEED VOL. 54 PAGE 338
  - DEED VOL. 74 PAGE 228
  - DEED VOL. 118 PAGES 160 & 161
  - DEED VOL. 121 PAGE 252
  - DEED VOL. 225 PAGE 545
  - DEED VOL. 252 PAGE 133
  - DEED VOL. 259 PAGE 282
  - O.R. VOL. 6 PAGE 77
  - O.R. VOL. 21 PAGE 261
  - O.R. VOL. 103 PAGE 449
  - O.R. VOL. 104 PAGE 569
  - O.R. VOL. 191 PAGE 374
  - PLAT VOL. 10 PAGE 337
  - PLAT VOL. 14 PAGE 177
  - PLAT VOL. 16 PAGES 685 & 935
  - PLAT VOL. 18 PAGES 103, 167 & 201
  - BEARINGS FROM PLAT VOL. 14 PAGE 177



BREAKDOWNS FOR 0.353 AC. TRACT  
 LOT 78: 0.169 AC.  
 LOT 77: 0.084 AC.  
 SEC. 15 VACATED ALLEYS: 0.100 AC.

THE BERLIN WATER COMPANY  
D.V. 121-252



OR 2049 1489

200800156052  
 MILLER LAB  
 MILLERSBURG OH

Instrument Book Page  
 200800156052 OR 19 1303

DONALD C. BAKER SURVEYING  
 138 N. CLAY STREET  
 MILLERSBURG, OHIO 44654  
 PH. 330-674-4788  
 FAX 330-674-6027

I CERTIFY THIS SURVEY TO BE CORRECT  
 TO THE BEST OF MY KNOWLEDGE.  
 DONALD C. BAKER P.S. 6938  
 DATE: APRIL 2, 2008  
 ALG/JDD-ERZ  
 FILE NAME: WORK3\S-107-08\ERZ

PLAT APPROVED  
 4/15/2008