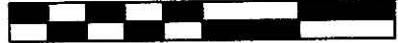


0 100 200



SCALE: 1"=100'

- 5/8" REBAR FOUND UNLESS OTHERWISE NOTED
- 5/8" REBAR WITH I.D. CAP SET I.D. CAP MARKED "BAKER 6938"

REFERENCES

- O.R. VOL. 164 PAGE 429
- O.R. VOL. 166 PAGE 121
- O.R. VOL. 178 PAGE 294
- O.R. VOL. 185 PAGE 3076
- O.R. VOL. 192 PAGE 2167
- PLAT VOL. 16 PAGES 441 & 657
- PLAT VOL. 19 PAGE 847
- BEARINGS FROM PLAT VOL 16 PAGE 441

KILLBUCK TOWNSHIP
 N.W. QTR. SECTION 15
 T-8 N; R-7 W
 HOLMES COUNTY, OHIO

SURVEYED FOR: JERRY VALENTINE

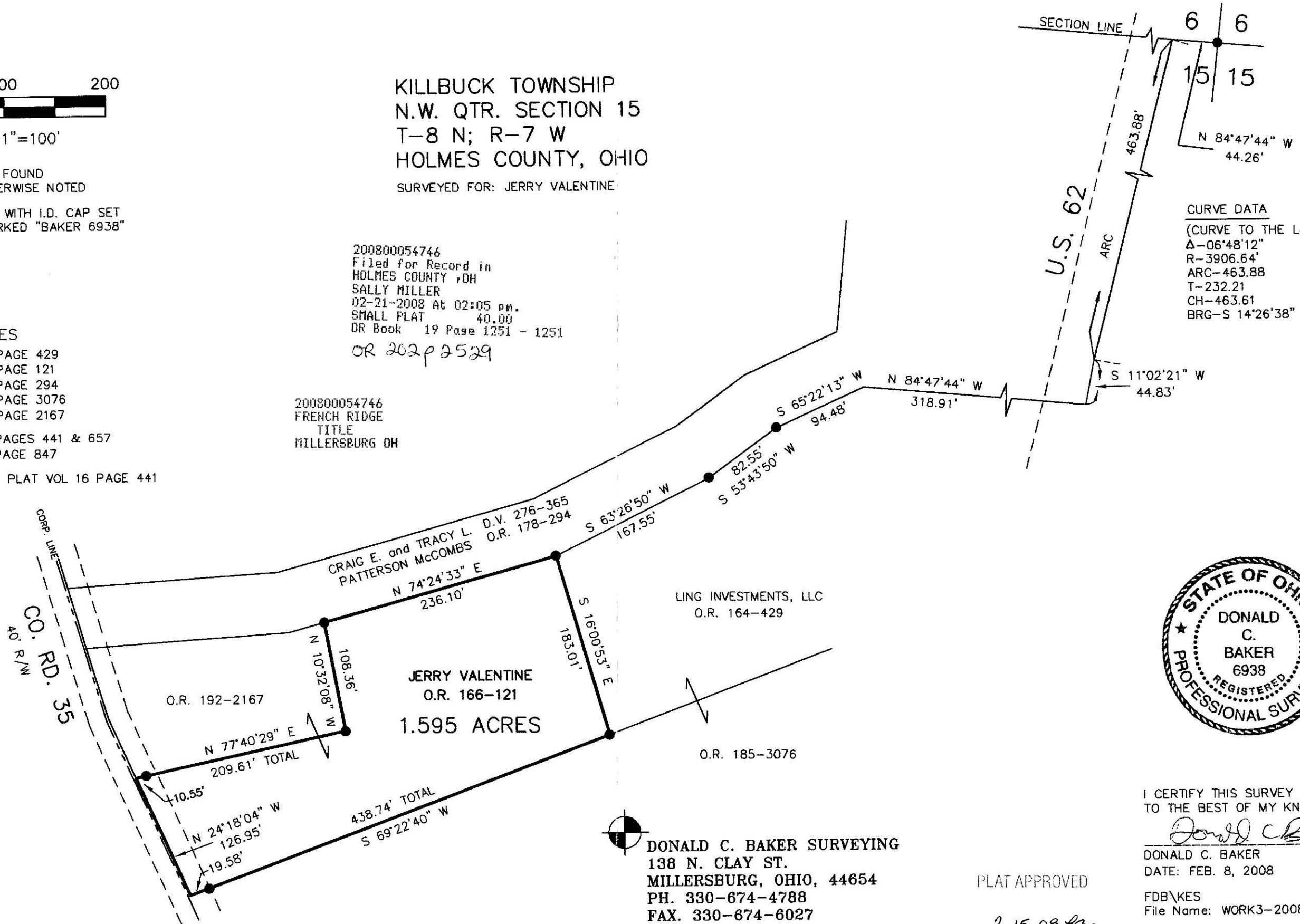
200800054746
 Filed for Record in
 HOLMES COUNTY, OH
 SALLY MILLER
 02-21-2008 At 02:05 pm.
 SMALL PLAT 40.00
 OR Book 19 Page 1251 - 1251

OR 202 p 2529

200800054746
 FRENCH RIDGE
 TITLE
 MILLERSBURG OH

CURVE DATA
 (CURVE TO THE LEFT)
 Δ-06°48'12"
 R-3906.64'
 ARC-463.88
 T-232.21
 CH-463.61
 BRG-S 14°26'38" W

Instrument 200800054746 OR Book Page 19 1251



I CERTIFY THIS SURVEY TO BE CORRECT TO THE BEST OF MY KNOWLEDGE.

Donald C. Baker

DONALD C. BAKER P.S. 6938
 DATE: FEB. 8, 2008

FDB\KES
 File Name: WORK3-2008\S-56-08\KES-ERZ

DONALD C. BAKER SURVEYING
 138 N. CLAY ST.
 MILLERSBURG, OHIO, 44654
 PH. 330-674-4788
 FAX. 330-674-6027

PLAT APPROVED

2-15-08 Az