



Billie B. Baldner  
D.V. 248 Pg. 188

200800054435  
KICK &  
TILMAN ATTYS  
LOUDBONVILLE OH

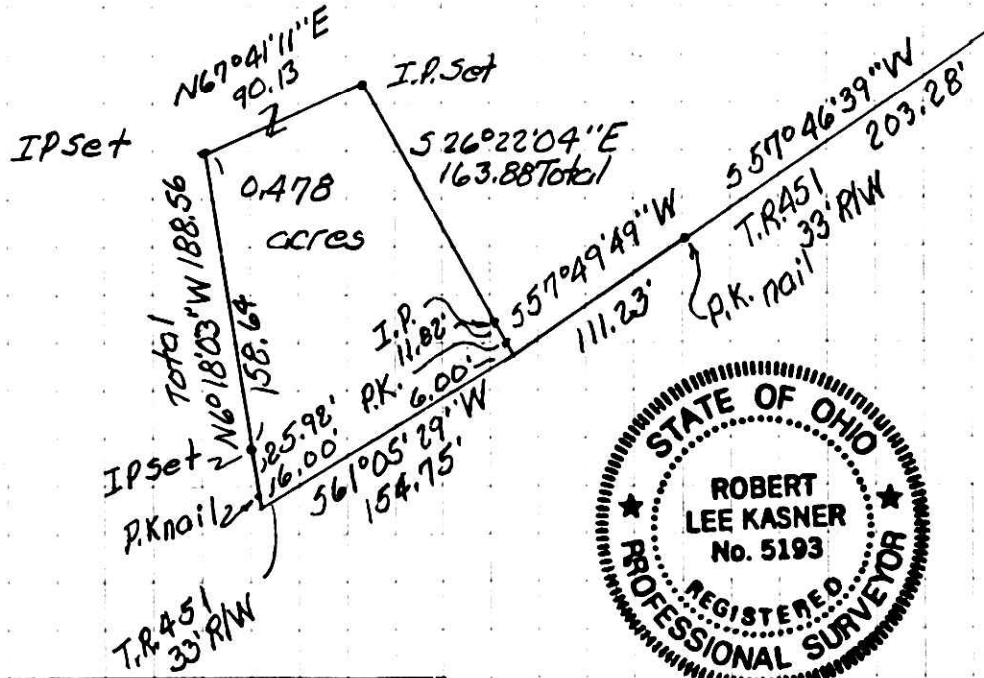
T.R. 452  
30' R/W

I.P. F'd in T.R. 452 at N.E. crnr  
S.E. 1/4 Sec. 18, T19N, R15W of  
Washington Twp., Holmes Co., Ohio

200800054435  
Filed for Record in  
HOLMES COUNTY, OH  
SALLY MILLER  
01-31-2008 At 01:03 pm.  
SMALL PLAT 40.00  
OR Book 19 Page 1241 - 1241  
OR 202 p 1102

East Line of Sec. 18  
53058'26"W 275.57'

P.K. nail on  
south side T.R. 451.



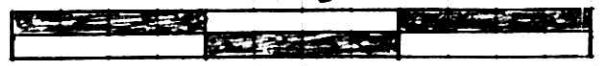
Bearing basis: P.B. 19 Pg. 1075  
Data used: Tax Map  
D.V. 248 Pg. 188  
P.B. 19 Pg. 1075  
P.B. 14 Pg. 434

All set iron pins are  $5/8$ " x 30" rebar  
PLK 5193

Plot of a Survey in  
Sec. 18, T19N, R15W in  
Washington Twp. Holmes  
Co., Oh.  
Robert L. Kasner P.E.P.S.  
7007 S.R. 39  
Millersburg, Oh. 44654  
330 674 9146  
9/18/07



Robert L. Kasner P.E.P.S.



Graphic Scale in Feet  
Scale: 1" = 100'

PLAT APPROVED  
12/27/2007