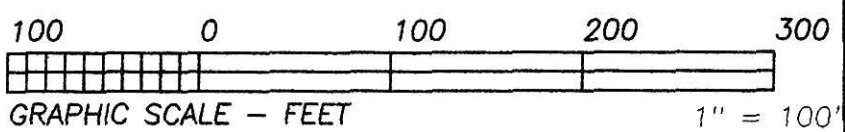


200700053723
Filed for Record in
HOLMES COUNTY OH
SALLY MILLER
12-13-2007 At 02:07 pm.
SMALL PLAT 40.00
OR Book 19 Page 1207 - 1207
OR 201 p 1673

200700053723
CRITCHFIELD
& JOHNSTON ATTYS
MILLERSBURG OH



REFERENCE DOCUMENTS:
TAX MAPS
DEEDS AS SHOWN
SURVEY PLATS:
3/61B, 4/159
13/77, 14/695
2/270

Jim Shamp
10-17-07
JIM SHAMP, REG. SUR. NO. S-6088 DATE

HEARTLAND SURVEYING, INC				
Jim Shamp				
5210 T.R. 257		MILLERSBURG, OH 44654		
PH: 330-674-4698		FAX: 330-674-0897		
SURVEY		HILLTOP REAL ESTATE, LLC		STATE OHIO
COUNTY HOLMES	TWP. HARDY	RNG. 7 W	TWP. 9 N	
2ND QUARTER, LOT 1			JOB NO. 060107.CRD 070903A.PL1	



PLAT APPROVED
12/12/2007