

SCALE: 1"=200'

- 5/8" REBAR FOUND UNLESS OTHERWISE NOTED
- 5/8" REBAR WITH I.D. CAP SET I.D. CAP MARKED "BAKER 6938"

**REFERENCES**

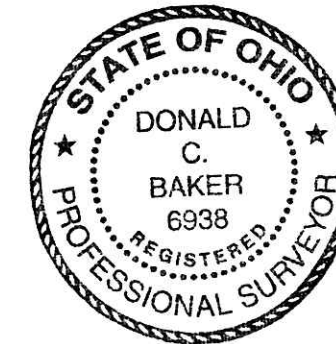
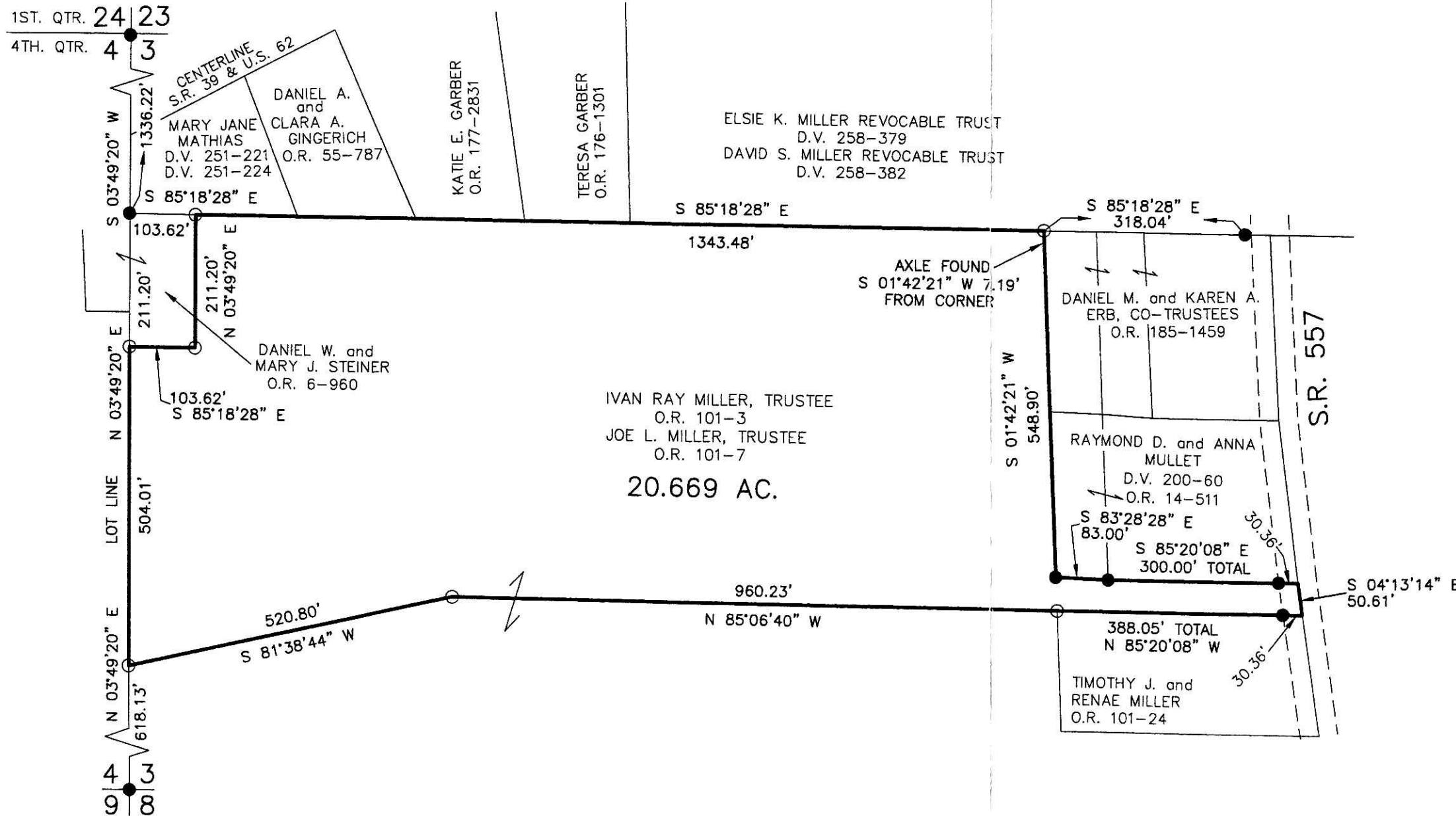
DEED VOL. 260 PAGE 60  
 DEED VOL. 258 PAGE 382  
 DEED VOL. 251 PAGE 224  
 O.R. VOL. 101 PAGE 3  
 O.R. VOL. 101 PAGE 7  
 O.R. VOL. 101 PAGE 24  
 O.R. VOL. 185 PAGE 1459  
 O.R. VOL. 6 PAGE 960  
 O.R. VOL. 176 PAGE 1301  
 O.R. VOL. 177 PAGE 2831  
 O.R. VOL. 55 PAGE 787  
 PLAT VOL. 18 PAGE 187  
 PLAT VOL. 5 PAGE 78  
 PLAT VOL. 3 PAGE 47  
 PLAT VOL. 19 PAGE 243  
 PLAT VOL. 17 PAGE 572  
 PLAT VOL. 18 PAGE 108  
 BEARINGS FROM  
 PLAT VOL. 18 PAGE 187

BERLIN TOWNSHIP  
 4TH. QTR., LOT 3  
 T-9 N; R-6 W  
 HOLMES COUNTY, OHIO

SURVEYED FOR: JOE L. MILLER

200700053273  
 Filed for Record in  
 HOLMES COUNTY, OH  
 SALLY MILLER  
 11-13-2007 At 10:32 am.  
 SMALL PLAT 40.00  
 OR Book 19 Page 1183 - 1183  
 ORV 200 page 3179

200700053273  
 CRITCHFIELD, CRITCHFIELD  
 JOHNSTON ATTY  
 MILLERSBURG OH



I CERTIFY THIS SURVEY TO BE CORRECT TO THE BEST OF MY KNOWLEDGE.

*Donald C. Baker*

DONALD C. BAKER P.S. 6938  
 DATE: APRIL 2, 2007

FDB/AEG  
 File Name: WORK2\S-166-07



DONALD C. BAKER SURVEYING  
 138 N. CLAY ST.  
 MILLERSBURG, OHIO, 44654  
 PH. 330-674-4788  
 FAX. 330-674-6027

PLAT APPROVED

*11/1/2007*