

200700053252  
 HEARTLAND  
 TITLE  
 MILLERSBURG OH

200700053252  
 Filed for Record in  
 HOLMES COUNTY, OH  
 SALLY MILLER  
 11-09-2007 At 03:32 pm.  
 SMALL PLAT 40.00  
 OR Book 19 Page 1180 - 1180

APPROVED FOR TRANSFER ONLY  
 NO SUBDIVISION PLAT REQUIRED  
 (O.R.C. 711.061 & 711.131)  
 Lot(s) not for building unless  
 approved by Board of Health.  
 HOLMES CO. PLANNING COMM.  
 By 11/9/07 Date mh

OR 200p 3107



SCALE: 1"=200'

- 5/8" REBAR FOUND  
UNLESS OTHERWISE NOTED
- 5/8" REBAR WITH I.D. CAP SET  
I.D. CAP MARKED "BAKER 6938"

REFERENCES:

- O.R. VOL. 196 PAGE 2029
- DEED VOL. 98 PAGE 489
- DEED VOL. 137 PAGE 349
- DEED VOL. 132 PAGE 511
- DEED VOL. 188 PAGE 490
- DEED VOL. 279 PAGE 556
- PLAT VOL. 4 PAGE 163
- PLAT VOL. 16 PAGE 515
- PLAT VOL. 15 PAGE 162

BEARINGS FROM PLAT VOL. 15 PAGE 162



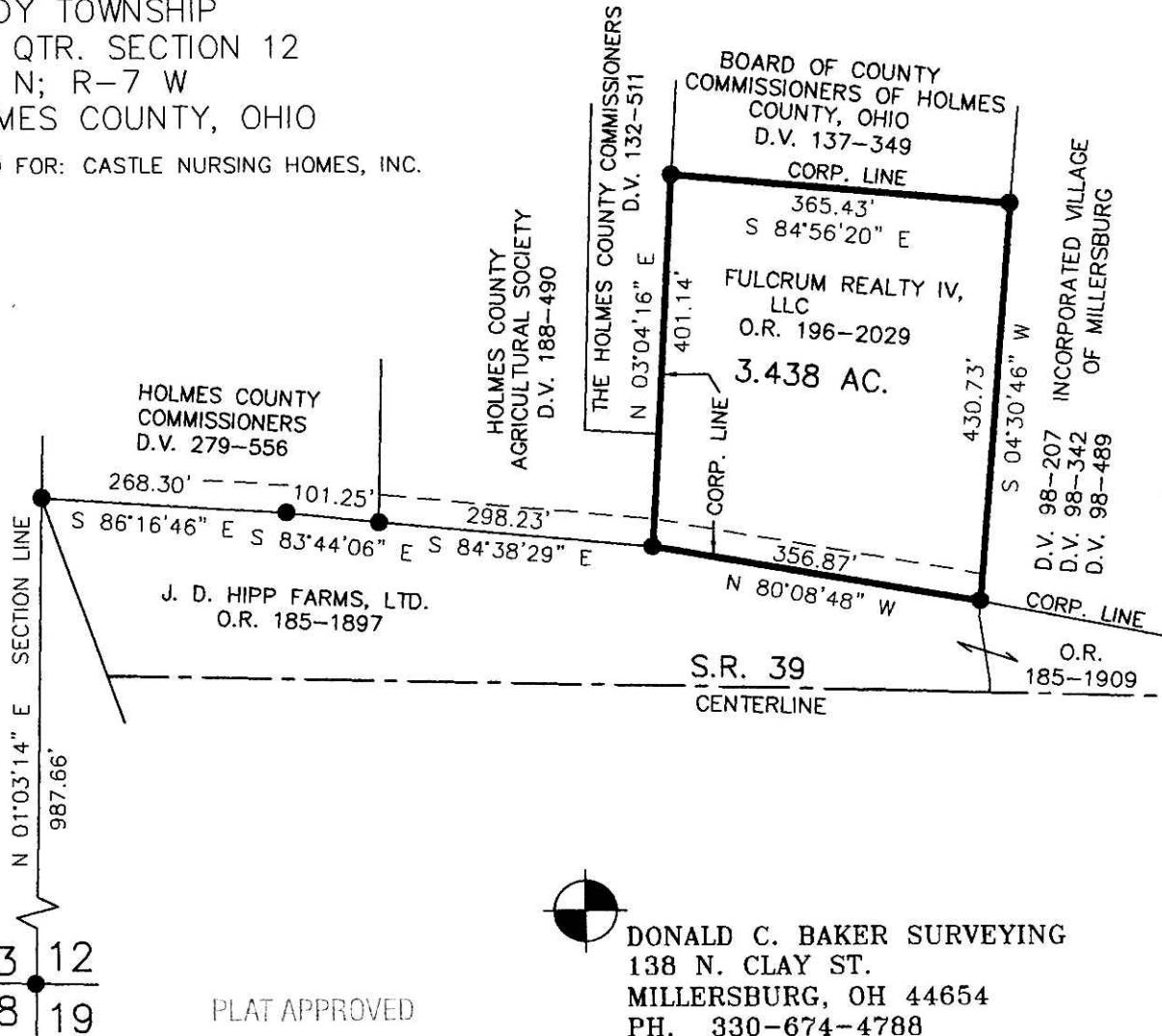
I CERTIFY THIS SURVEY TO BE CORRECT  
 TO THE BEST OF MY KNOWLEDGE.

Donald C. Baker  
 DONALD C. BAKER PS 6938  
 JDD\ERZ DATE: APRIL 7, 2005  
 File Name: C:\JOBS\S-94-A5  
 REVISED: OCT. 29, 2007

VILLAGE OF MILLERSBURG

HARDY TOWNSHIP  
 S.W. QTR. SECTION 12  
 T-9 N; R-7 W  
 HOLMES COUNTY, OHIO

SURVEYED FOR: CASTLE NURSING HOMES, INC.



13 12  
 18 19

PLAT APPROVED

11/9/2007



DONALD C. BAKER SURVEYING  
 138 N. CLAY ST.  
 MILLERSBURG, OH 44654  
 PH. 330-674-4788  
 FAX: 330-674-6027

Instrument 200700053252 OR Book Page 19 1180