

PAINT TOWNSHIP
S.W. QTR. SECTION 31
T-15 N; R-11 W
N.W. QTR. SECTION 6
T-14 N; R-11 W
HOLMES COUNTY, OHIO

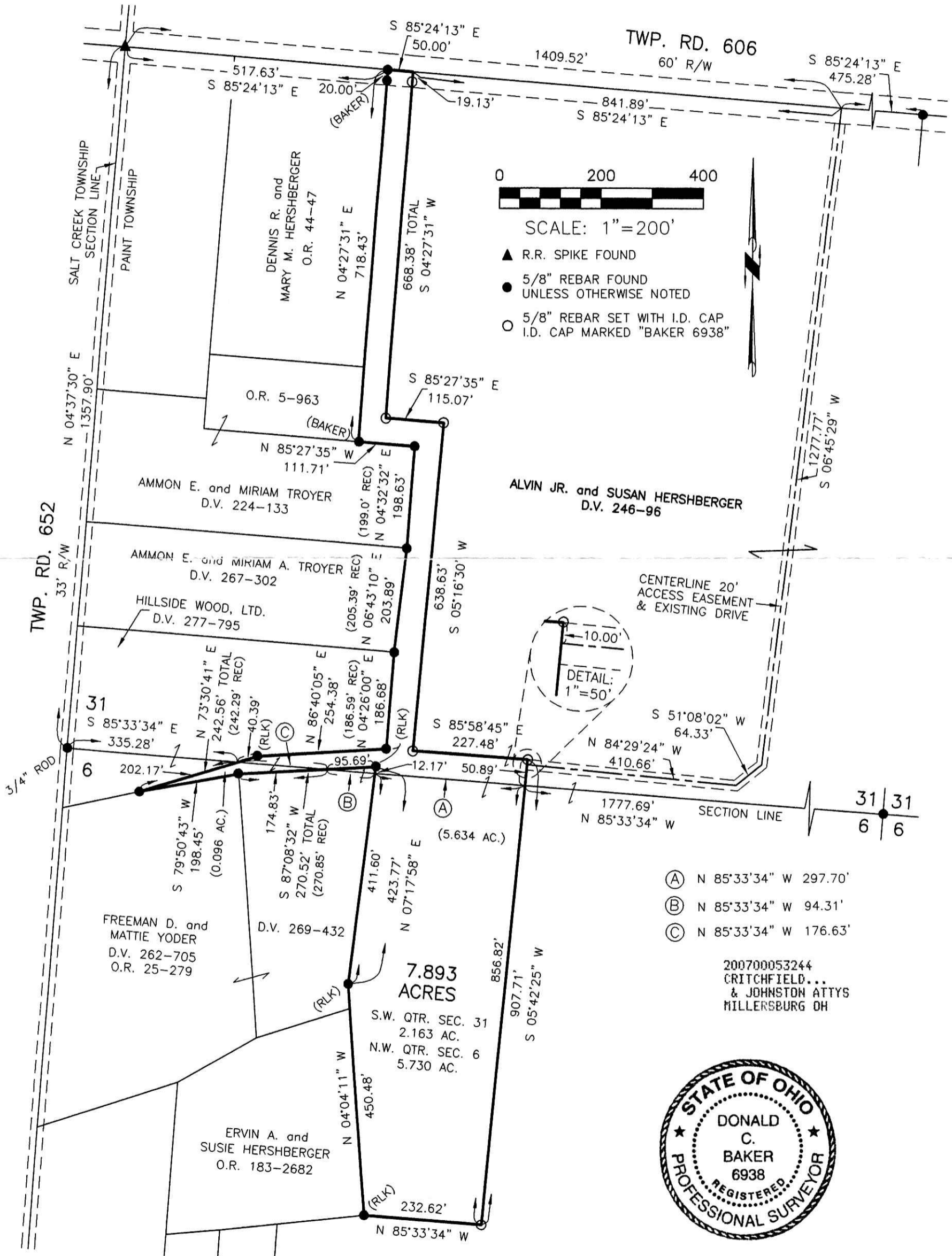
REFERENCES

- DEED VOL. 224 PAGE 133
 - DEED VOL. 246 PAGE 96
 - DEED VOL. 267 PAGE 302
 - DEED VOL. 277 PAGE 795
 - O.R. VOL. 5 PAGE 963
 - O.R. VOL. 44 PAGE 47
 - O.R. VOL. 183 PAGE 2682
 - PLAT VOL. 10 PAGE 271
 - PLAT VOL. 12 PAGE 488
 - PLAT VOL. 14 PAGES 707 & 861
 - PLAT VOL. 16 PAGE 576
 - PLAT VOL. 19 PAGE 515
- BEARINGS FROM PLAT VOL. 19 PAGE 515

200700053244
Filed for Record in
HOLMES COUNTY, OH
SALLY MILLER
11-09-2007 At 02:29 pm.
SMALL PLAT 40.00
OR Book 19 Page 1178 - 1178

OR 200 p 3087

SURVEYED FOR: ALVIN HERSHBERGER JR.



- (A) N 85°33'34" W 297.70'
- (B) N 85°33'34" W 94.31'
- (C) N 85°33'34" W 176.63'

200700053244
CRITCHFIELD...
& JOHNSTON ATTYS
MILLERSBURG OH

I CERTIFY THIS SURVEY TO BE CORRECT TO THE BEST OF MY KNOWLEDGE.

Donald C. Baker
DONALD C. BAKER P.S. 6938

DATE: AUG. 22, 2007
KES\ALG
FILE NAME: WORK3A\S-368-07\ERZ

DONALD C. BAKER SURVEYING
138 N. CLAY STREET
MILLERSBURG, OHIO 44654
PH. 330-674-4788
FAX 330-674-6027

PLAT APPROVED

10/4/2007