

PRAIRIE TOWNSHIP  
 S.W. QTR. SECTION 34  
 T-14 N; R-13 W  
 HOLMES COUNTY, OHIO

SURVEYED FOR: ROY MILLER

200700052627  
 Filed for Record in  
 HOLMES COUNTY, OH  
 SALLY MILLER  
 10-03-2007 At 02:42 pm.  
 SMALL PLAT 40.00  
 OR Book 19 Page 1154 - 1154

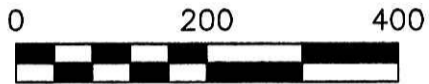
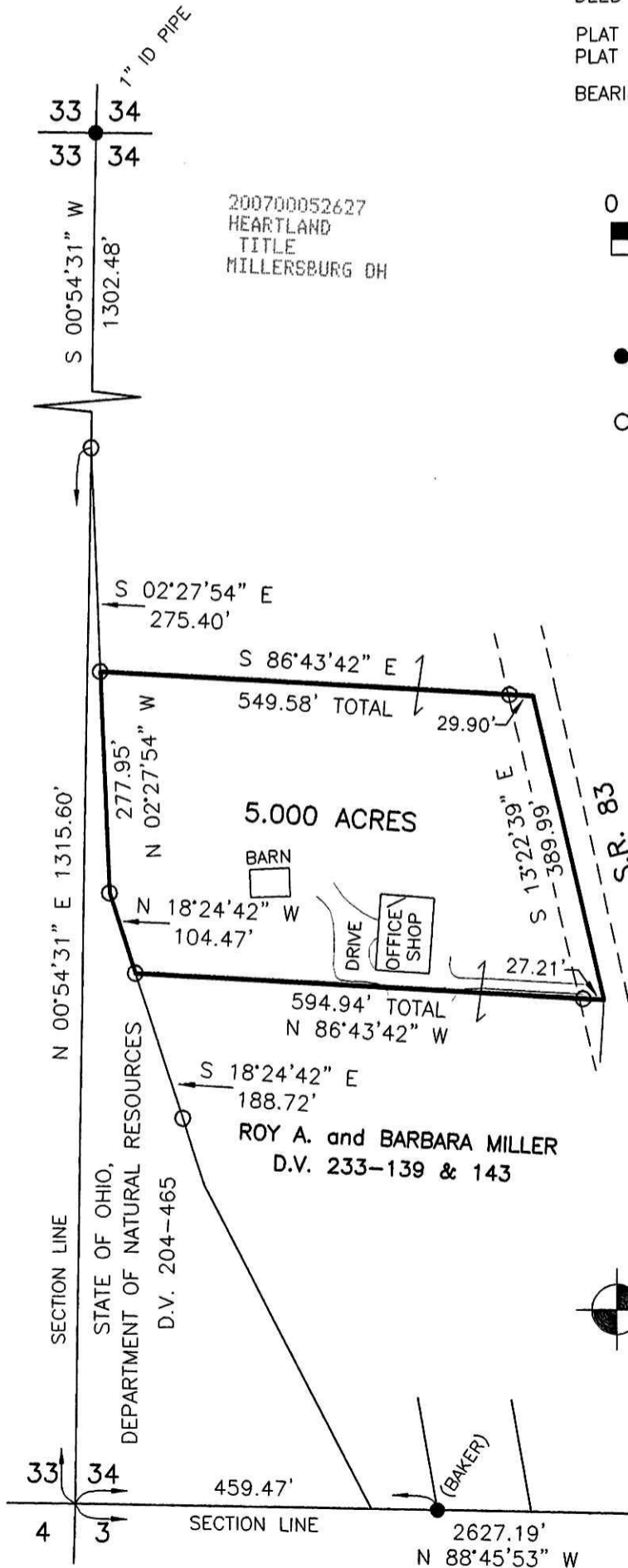
OR 200 p 324

REFERENCES

DEED VOL. 204 PAGE 465  
 DEED VOL. 233 PAGES 139 & 143

PLAT VOL. 8 PAGE 359  
 PLAT VOL. 12 PAGE 779

BEARINGS FROM PLAT VOL. 8 PAGE 359



SCALE: 1"=200'

- 5/8" REBAR FOUND  
UNLESS OTHERWISE NOTED
- 5/8" REBAR SET WITH I.D. CAP  
I.D. CAP MARKED "BAKER 6938"



I CERTIFY THIS SURVEY TO BE CORRECT  
 TO THE BEST OF MY KNOWLEDGE.

*Donald C. Baker*

DONALD C. BAKER P.S. 6938  
 DATE: JULY 31, 2007  
 FDB\AEG  
 FILE NAME: WORK3\S-459-07\ERZ



DONALD C. BAKER SURVEYING  
 138 N. CLAY STREET  
 MILLERSBURG, OHIO 44654  
 PH. 330-674-4788  
 FAX 330-674-6027

PLAT APPROVED

10/2/2007

T-14 N; R-13 W 34 | 34  
 T-13 N; R-13 W 3 | 3  
 C.R. 245  
 60' R/W