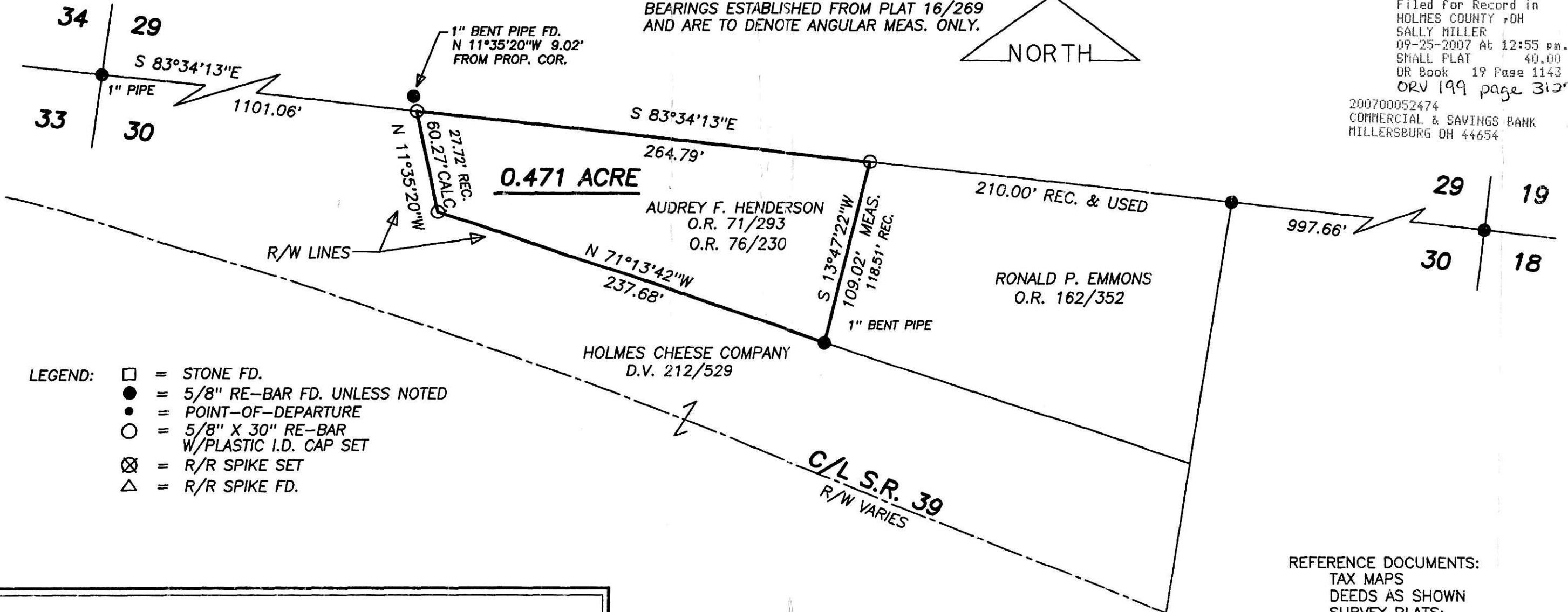


Instrument Book Page  
200700052474 OR 19 1143

200700052474  
Filed for Record in  
HOLMES COUNTY, OH  
SALLY MILLER  
09-25-2007 At 12:55 pm.  
SMALL PLAT 40.00  
OR Book 19 Page 1143 - 1143  
ORV 199 page 3127

200700052474  
COMMERCIAL & SAVINGS BANK  
MILLERSBURG OH 44654

BEARINGS ESTABLISHED FROM PLAT 16/269  
AND ARE TO DENOTE ANGULAR MEAS. ONLY.



- LEGEND:
- = STONE FD.
  - = 5/8" RE-BAR FD. UNLESS NOTED
  - = POINT-OF-DEPARTURE
  - = 5/8" X 30" RE-BAR W/PLASTIC I.D. CAP SET
  - ⊗ = R/R SPIKE SET
  - △ = R/R SPIKE FD.

REFERENCE DOCUMENTS:  
TAX MAPS  
DEEDS AS SHOWN  
SURVEY PLATS:  
16/269  
7/60  
14/727

## HEARTLAND SURVEYING, INC

Jim Shamp

5210 T.R. 257 MILLERSBURG, OH 44654  
PH: 330-674-4698 FAX: 330-674-0897

SURVEY		STATE	
AUDREY F. HENDERSON		OHIO	
COUNTY	TWP.	RNG.	TWP.
HOLMES	HARDY	7 W	9 N
2ND QUARTER LOT 30		031008	

I CERTIFY THIS PLAT & SURVEY TO BE CORRECT TO THE BEST  
OF MY KNOWLEDGE:

*Jim Shamp*  
JIM SHAMP, REG. SUR. NO. S-6088      NOVEMBER 5, 2003  
DATE



PLAT APPROVED

8/22/2007-b