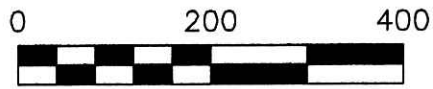


RIPLEY TOWNSHIP  
 N.E. QTR. SECTION 7  
 T-17 N; R-14 W  
 HOLMES COUNTY OHIO

SURVEYED FOR: TOM LANG

Instrument Book Page  
 200700050969 OR 19 1070



SCALE: 1"=200'

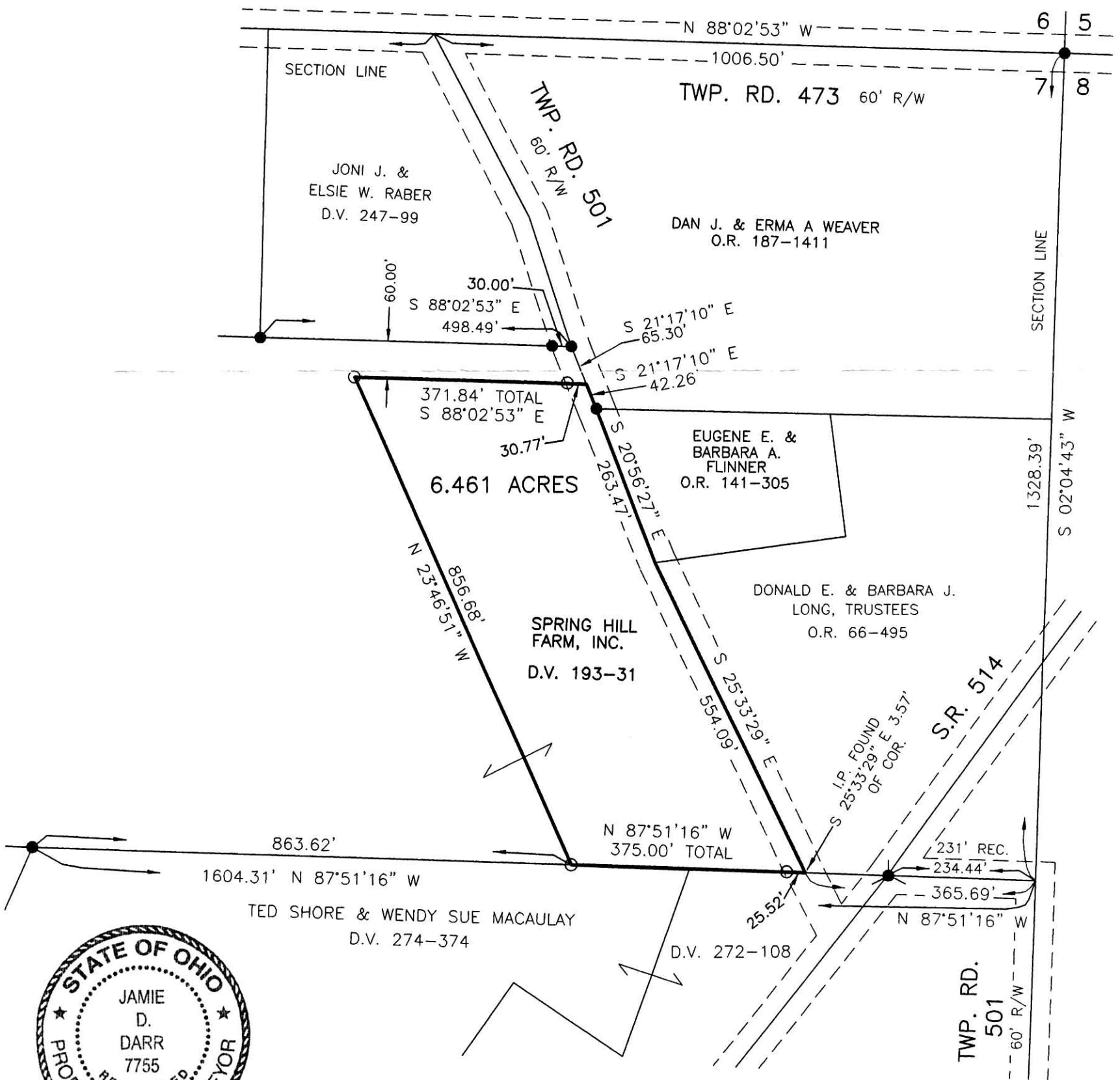
- P.K. NAIL FOUND
- 5/8" REBAR FOUND  
UNLESS OTHERWISE NOTED
- 5/8" REBAR SET WITH I.D. CAP  
I.D. CAP MARKED "BAKER 6938"

- REFERENCES
- DEED VOL. 193 PAGE 31
  - DEED VOL. 241 PAGE 457
  - O.R. VOL. 69 PAGE 400
  - O.R. VOL. 55 PAGE 25
  - PLAT VOL. 16 PAGE 156
  - PLAT VOL. 17 PAGE 553
  - PLAT VOL. 16 PAGE 27
  - PLAT VOL. 17 PAGE 80
  - PLAT VOL. 12 PAGE 416
  - PLAT VOL. 7 PAGE 47

BEARINGS FROM  
 PLAT VOL. 16 PAGE 156

200700050969  
 Filed for Record in  
 HOLMES COUNTY, OH  
 SALLY MILLER  
 07-03-2007 At 02:04 pm.  
 SMALL PLAT 40.00  
 OR Book 19 Page 1070 - 1070  
 ORV 198 Pgs 560 & 562

200700050969  
 HOLMES COUNTY TITLE  
 MILLERSBURG OH



PLAT APPROVED

4/5/2007 DB

I CERTIFY THIS SURVEY TO BE CORRECT  
 TO THE BEST OF MY KNOWLEDGE.

*[Signature]*  
 JAMIE D. DARR P.S. 7755  
 DATE: MARCH 28, 2007  
 JDD/AEG  
 FILE NAME: WORK3\S-15-07



DONALD C. BAKER SURVEYING  
 138 N. CLAY STREET  
 MILLERSBURG, OHIO 44654  
 PH. 330-674-4788  
 FAX 330-674-6027