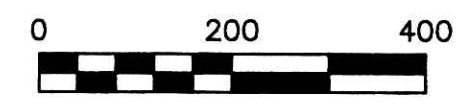
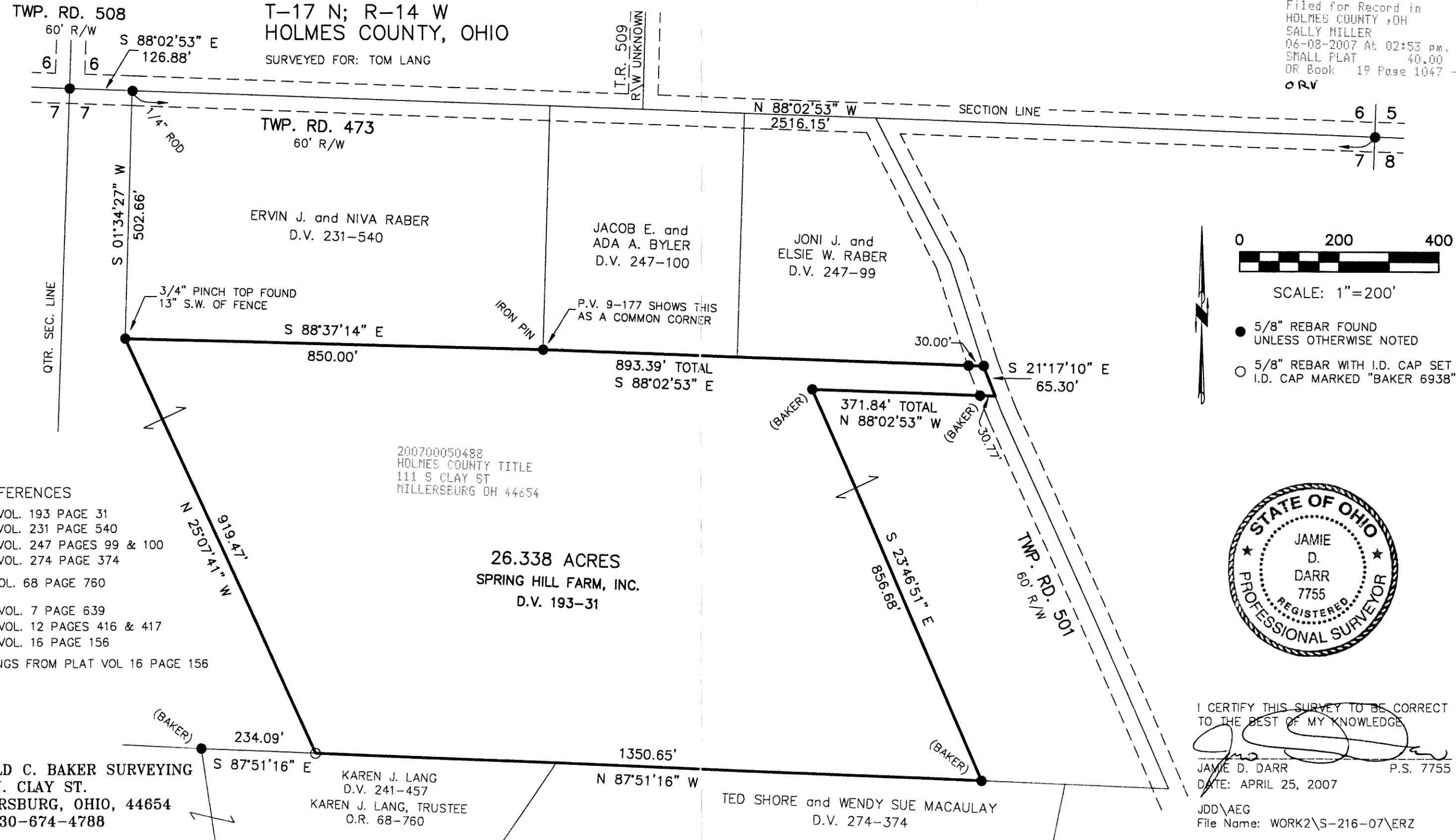


RIPLEY TOWNSHIP
N.E. QTR. SECTION 7
T-17 N; R-14 W
HOLMES COUNTY, OHIO

SURVEYED FOR: TOM LANG

200700050488
Filed for Record in
HOLMES COUNTY, OH
SALLY MILLER
06-08-2007 At 02:53 pm.
SMALL PLAT 40.00
OR Book 19 Page 1047 - 1047
ORV



SCALE: 1"=200'

- 5/8" REBAR FOUND UNLESS OTHERWISE NOTED
- 5/8" REBAR WITH I.D. CAP SET I.D. CAP MARKED "BAKER 6938"



DONALD C. BAKER SURVEYING
138 N. CLAY ST.
MILLERSBURG, OHIO, 44654
PH. 330-674-4788

Instrument 200700050488 OR Book Page 19 1047