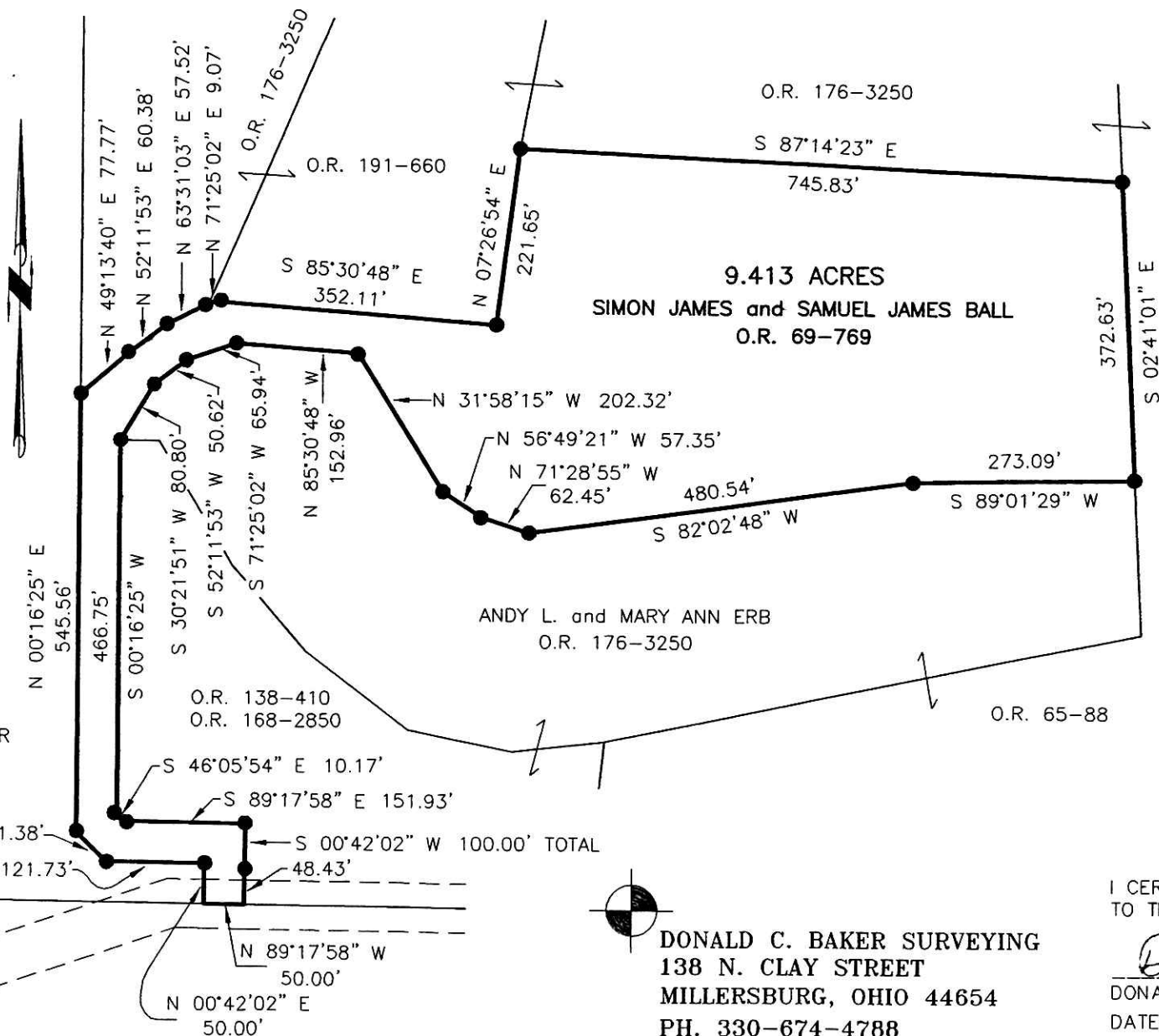


MECHANIC TOWNSHIP
2ND. QTR., LOT 23
T-8 N; R-6 W
HOLMES COUNTY, OHIO

SURVEYED FOR: ANDY ERB

REFERENCES

- O.R. VOL. 52 PAGE 537
- O.R. VOL. 65 PAGE 88
- O.R. VOL. 69 PAGE 769
- O.R. VOL. 168 PAGE 2850
- O.R. VOL. 176 PAGE 3250
- O.R. VOL. 191 PAGE 660
- PLAT VOL. 17 PAGES 506 & 747
- PLAT VOL. 18 PAGE 518
- PLAT VOL. 19 PAGES 268 & 790
- BEARINGS FROM PLAT VOL. 18 PAGE 518



200700050280
Filed for Record in
HOLMES COUNTY, OH
SALLY MILLER
05-31-2007 At 01:30 pm.
SMALL PLAT 40.00
OR Book 19 Page 1037 - 1037

OR 197 p 1157

200700050280
PAUL A
MILLER LAW
MILLERSBURG OH



SCALE: 1"=200'

● 5/8" REBAR FOUND

THIS PLAT CREATED FROM DATA
FROM MY PREVIOUS SURVEYS AND
NOT FROM A NEW FIELD SURVEY.



I CERTIFY THIS SURVEY TO BE CORRECT
TO THE BEST OF MY KNOWLEDGE.

Donald C Baker

DONALD C. BAKER P.S. 6938

DATE: APRIL 18, 2007

KES
FILE NAME: WORK3\S-225-07\ERZ

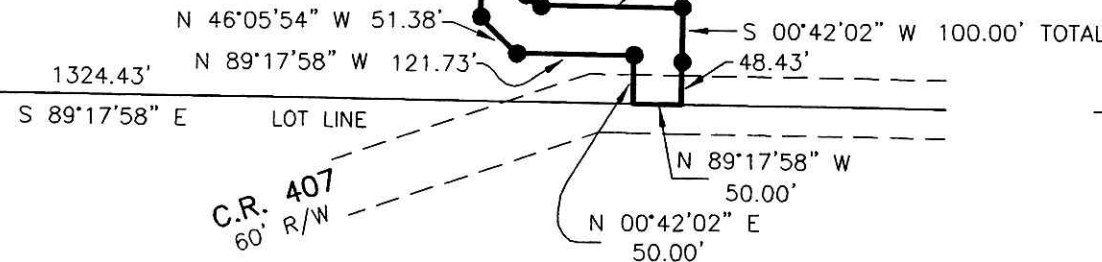
DONALD C. BAKER SURVEYING
138 N. CLAY STREET
MILLERSBURG, OHIO 44654
PH. 330-674-4788
FAX 330-674-6027

Instrument
200700050280 OR
Book Page
19 1037

PLAT APPROVED

4/17/2007

28 | 23
29 | 22



C.R. 407
60' R/W