

PRAIRIE TOWNSHIP
S.W. QTR. SECTION 26
T-14 N; R-13 W
HOLMES COUNTY, OHIO

SURVEYED FOR: WILMA SHETLER

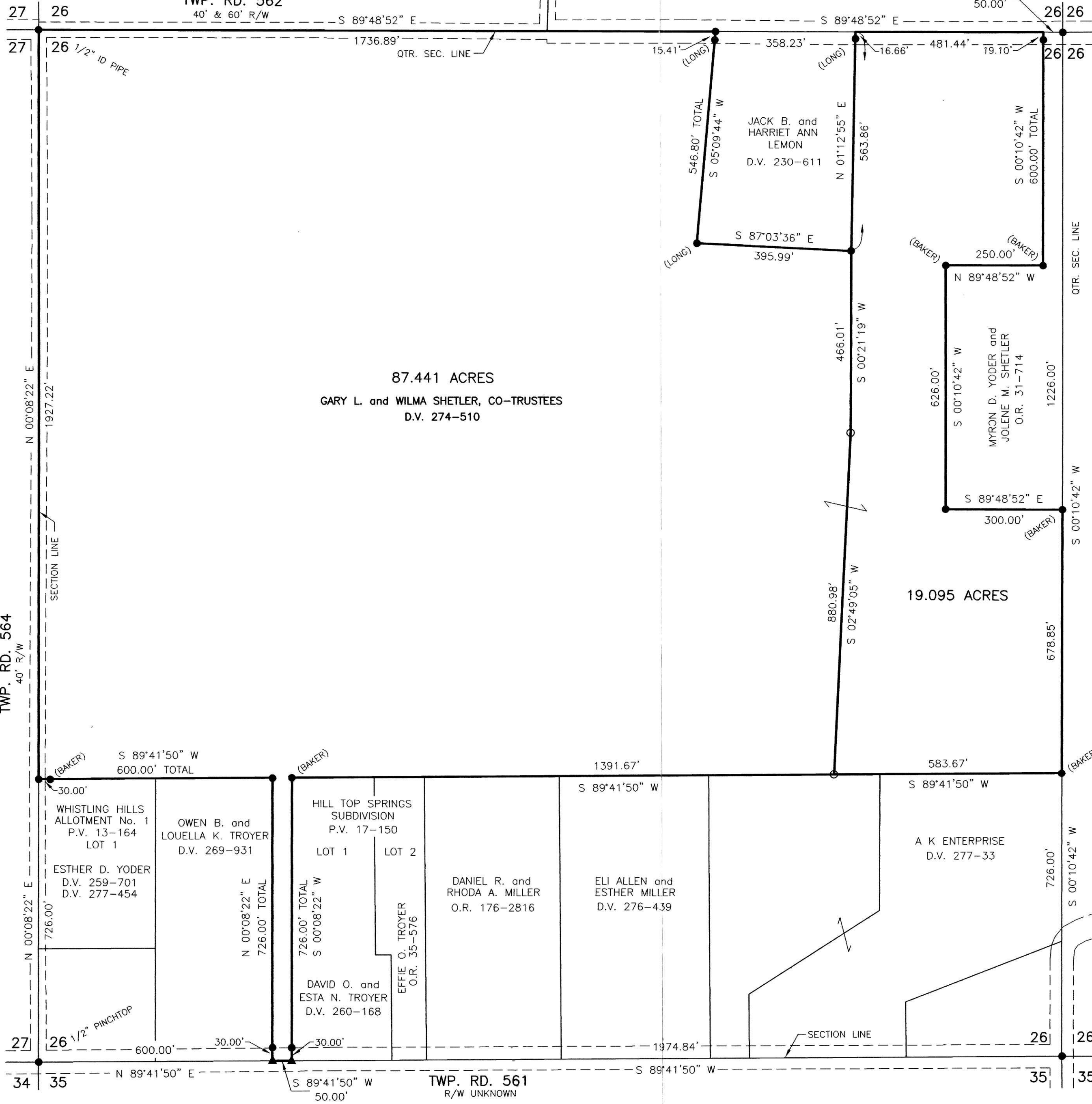
REFERENCES

- DEED VOL. 230 PAGE 611
- DEED VOL. 274 PAGE 510
- O.R. VOL. 31 PAGE 714
- PLAT VOL. 10 PAGES 563 & 593
- PLAT VOL. 12 PAGE 941
- PLAT VOL. 13 PAGE 164
- PLAT VOL. 17 PAGE 106
- BEARINGS FROM PLAT VOL. 12 PAGE 941

TWP. RD. 563
40' R/W

TWP. RD. 562
40' & 60' R/W

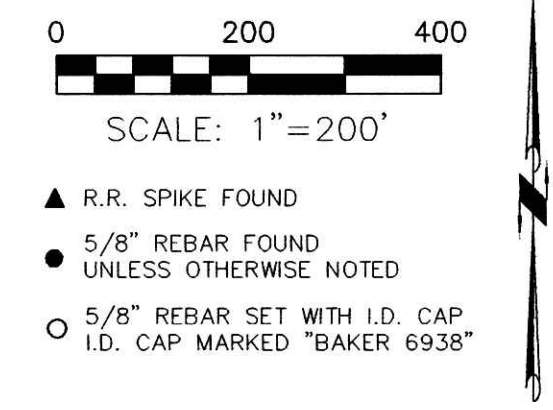
N 89°48'52" W
50.00'



Instrument Book Page
200700049844 OR 19 1014

200700049844
Filed for Record in
HOLMES COUNTY rOH
SALLY MILLER
05-08-2007 At 10:52 am.
PLAT MED 43.20
OR Book 19 Page 1014 - 1014

200700049844
WAYNE A
ZACOUR ATTY
WOOSTER OH



I CERTIFY THIS SURVEY TO BE CORRECT TO THE BEST OF MY KNOWLEDGE.
 DONALD C. BAKER P.S. 6938
 DATE: FEB. 26, 2007
 KES\ALG
 FILE NAME: WORK3\S-66-07\ERZ

TWP. RD. 565
R/W UNKNOWN

DONALD C. BAKER SURVEYING
138 N. CLAY STREET
MILLERSBURG, OHIO 44654
PH. 330-674-4788
FAX 330-674-6027

PLAT APPROVED
4/26/2007