

BERLIN TOWNSHIP
 1ST. QTR., LOT 17
 T-9 N; R-6 W
 HOLMES COUNTY, OHIO

VOL 0019-899

Instrument Book Page
 200600047516 DR 19 899

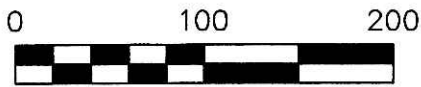
SURVEYED FOR: BERLIN TWP. TRUSTEES

200600047516
 Filed for Record in
 HOLMES COUNTY, OH
 SALLY MILLER
 12-28-2006 At 02:59 pm.
 SMALL PLAT 40.00
 DR Book 19 Page 899 - 899
 ORV 193 page 3358

REFERENCES

DEED VOL. 268 PAGE 903
 O.R. VOL. 92 PAGE 719
 PLAT VOL. 12 PAGE 860
 PLAT VOL. 14 PAGE 823
 PLAT VOL. 16 PAGE 414
 PLAT VOL. 13 PAGE 87
 BEARINGS FROM PLAT VOL. 16 PAGE 933

200600047516
 HEARTLAND TITLE
 MILLERSBURG, OH



SCALE: 1"=100'

- ▲ R.R. SPIKE FOUND
- 5/8" REBAR FOUND
UNLESS OTHERWISE NOTED
- 5/8" REBAR SET WITH I.D. CAP
I.D. CAP MARKED "BAKER 6938"



I CERTIFY THIS SURVEY TO BE CORRECT
 TO THE BEST OF MY KNOWLEDGE.

JAMIE D. DARR P.S. 7755

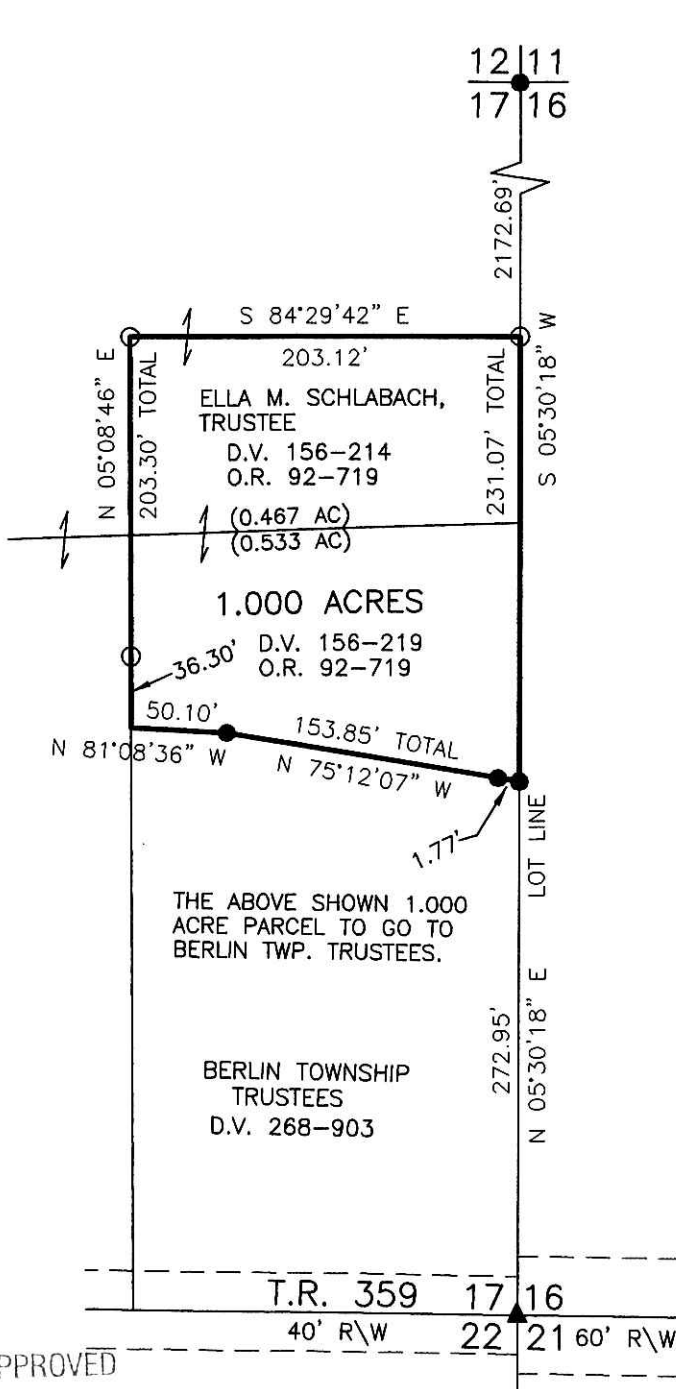
DATE: OCT. 23, 2006

JDD/AEG

FILE NAME: WORK3\S-725-06



DONALD C. BAKER SURVEYING
 138 N. CLAY STREET
 MILLERSBURG, OHIO 44654
 PH. 330-674-4788
 FAX 330-674-6027



PLAT APPROVED

12/8/2006