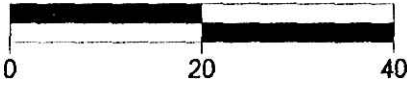


BOUNDARY SURVEY  
 FOR  
 MANUFACTURERS AND TRADERS  
 TRUST COMPANY, AS TRUSTEE  
 IN  
 LOT 51 (OLD LOT 6)  
 DUNCAN'S ADDITION  
 VILLAGE OF KILLBUCK  
 SECTION 6  
 RANGE 7W, TOWNSHIP 8N  
 KILLBUCK TOWNSHIP  
 HOLMES COUNTY  
 OHIO

SCALE 1" = 20' AUG. 19, 1992  
 REVISED NOV. 29, 2006



Vol. **6019** Page **898**

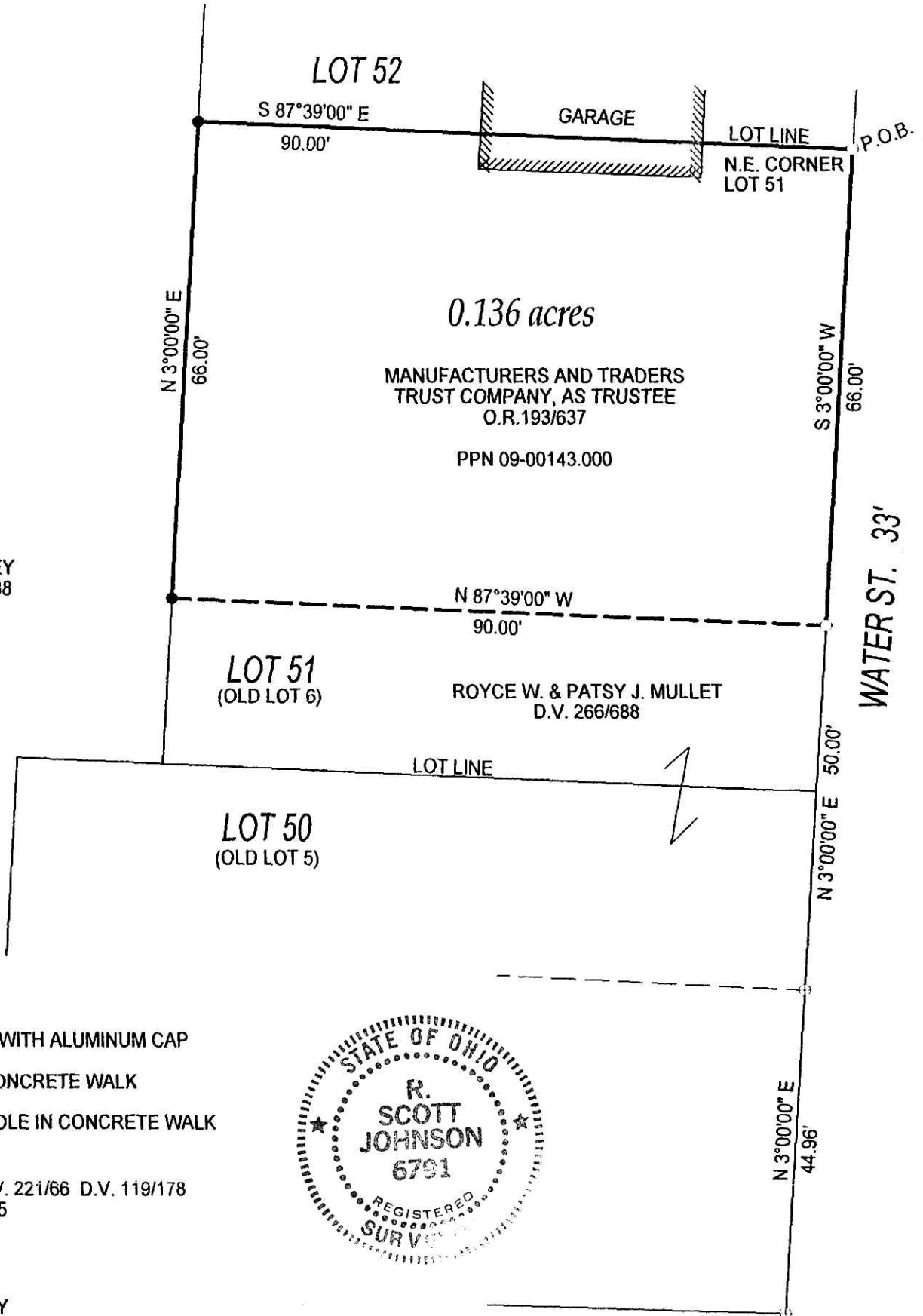
200600047515  
 SOVEREIGN TITLE AGENCY  
 HUDSON OH

Instrument Book Page  
 200600047515 DR 19 898

200600047515  
 Filed for Record in  
 HOLMES COUNTY OH  
 SALLY MILLER  
 12-28-2006 At 02:13 pm.  
 SMALL PLAT 40.00  
 DR Book 19 Page 898 - 898  
 ORV 193 page 3355



NORTH BASED ON SURVEY  
 BY D.C. BAKER R.P.S.#6938  
 MAY 17, 1990



- SET 3/4" X 30" REBAR WITH ALUMINUM CAP
- SET DRILL HOLE IN CONCRETE WALK
- ⊕ RECOVERED DRILL HOLE IN CONCRETE WALK

RESEARCH DATA:  
 DEEDS: D.V. 256/262 D.V. 221/66 D.V. 119/178  
 D.V. 231/572 D.V. 196/105  
 PLATS: P.B. 1 / Pg. 125



PREPARED BY  
**AMERICAN PRECISION SURVEYING**  
 450 S. FOURTH ST.  
 COSHOCTON, OHIO  
 43812  
 740-622-2783

PLAT APPROVED

*R. Scott Johnson*  
 R. SCOTT JOHNSON R.P.S. 6791

12/28/2006