

KILLBUCK TOWNSHIP  
N.W. & S.W. QTRS. SECTION 6  
T-8 N; R-7 W  
HOLMES COUNTY, OHIO

SURVEYED FOR: DALE DUNCAN

CURVE DATA

(A)	(B)
Δ=02°08'44"	Δ=16°33'01"
R=2099.50'	R=2099.50'
L=78.62'	L=606.46'
T=39.31'	T=305.36'
C LEN=78.61'	C LEN=604.35'
BRG=N 82°24'38" E	BRG=N 73°03'45" E

200600046246  
Filed for Record in  
HOLMES COUNTY, OH  
SALLY MILLER  
10-13-2006 At 03:45 pm.  
SMALL PLAT 40.00  
OR Book 19 Page 834 - 834

OR 192 p 1091

200600046246  
BLAIR A  
BOWER ATTY  
MILLERSBURG, OH

OR 192 p 1093

OR 192 p 1095

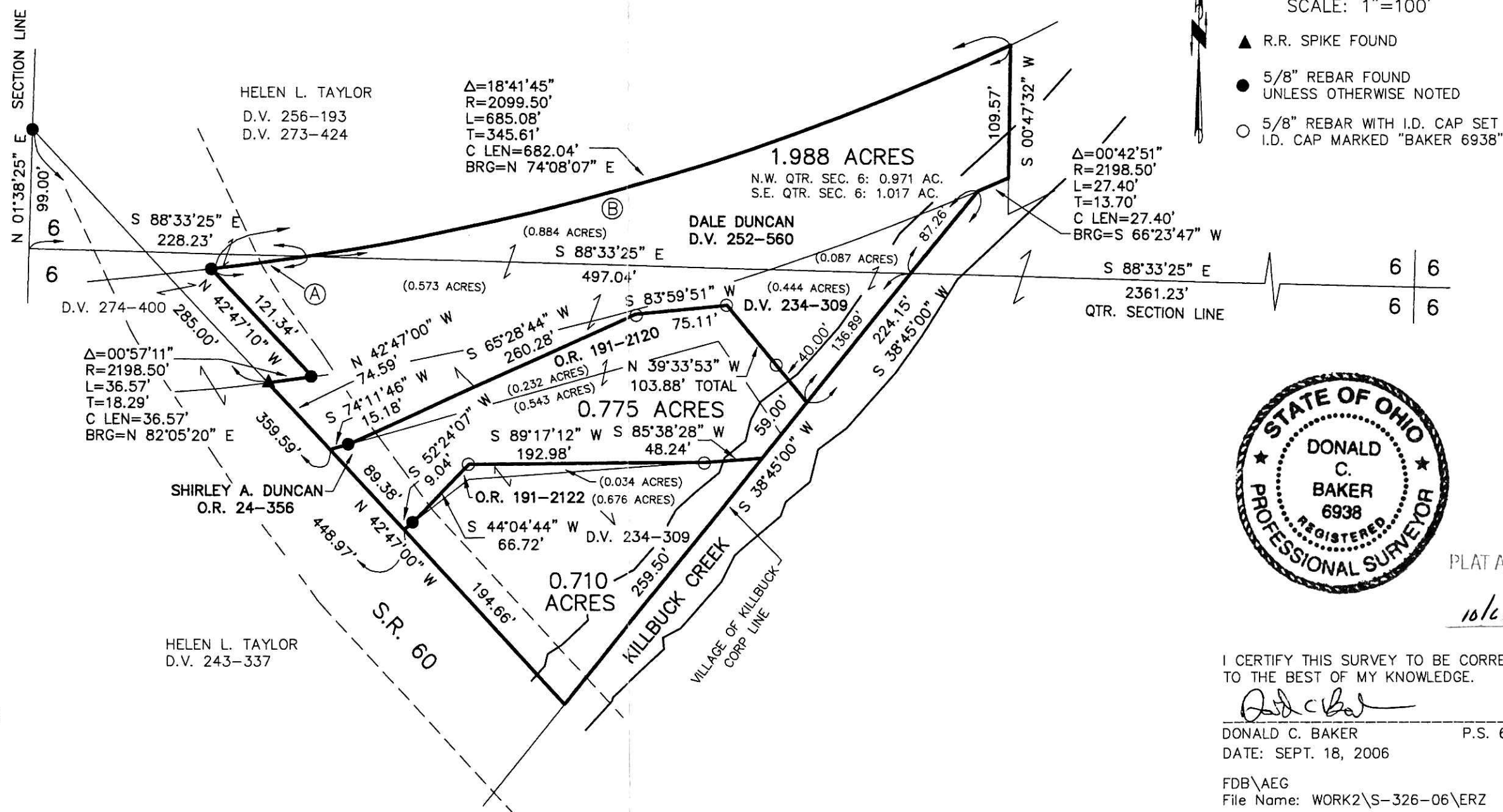
REFERENCES

- DEED VOL. 234 PAGE 309
- DEED VOL. 243 PAGE 337
- DEED VOL. 252 PAGE 560
- DEED VOL. 256 PAGE 193
- DEED VOL. 273 PAGE 424
- DEED VOL. 274 PAGE 400

- O.R. VOL. 24 PAGE 356
- O.R. VOL. 191 PAGES 2120 & 2122

- PLAT VOL. 12 PAGE 734
- PLAT VOL. 13 PAGE 69
- PLAT VOL. 16 PAGE 979
- PLAT VOL. 19 PAGE 801

BEARINGS FROM PLAT VOL 16 PAGE 979



PLAT APPROVED  
10/6/2006

I CERTIFY THIS SURVEY TO BE CORRECT TO THE BEST OF MY KNOWLEDGE.  
*Donald C. Baker*  
DONALD C. BAKER P.S. 6938  
DATE: SEPT. 18, 2006  
FDB/AEG  
File Name: WORK2\S-326-06\ERZ

DONALD C. BAKER SURVEYING  
138 N. CLAY ST.  
MILLERSBURG, OHIO, 44654  
PH. 330-674-4788  
FAX. 330-674-6027

Instrument Book Page  
200600046246 OR 19 834