

VOL 0019 PAGE 819

200600046000
Filed for Record in
HOLMES COUNTY, OH
SALLY MILLER
10-02-2006 At 01:21 pm.
SMALL PLAT 40.00
OR Book 19 Page 819 - 819

OR 191p 3446

200600046000
PAUL A
MILLER LAW
MILLERSBURG, OH

26 26
26 26
LARGE TREE AT CORNER
6.00'

SALT CREEK TOWNSHIP
S.E. QTR. SECTION 26
T-15 N; R-12 W
HOLMES COUNTY, OHIO

SURVEYED FOR: ERVIN M. MILLER

REFERENCES:

- DEED VOL. 204 PAGE 713
- DEED VOL. 273 PAGE 652
- PLAT VOL. 15 PAGE 134
- BEARINGS FROM PLAT VOL. 15 PAGE 134

S 01°23'17" W
2155.60' TOTAL

QTR. SEC. LINE

S 89°52'26" E
213.35' TOTAL

5.41'
32" MAPLE AT CORNER

2.493 ACRES

MELVIN R. &
EDNA MILLER
D.V. 204-713

N 01°23'17" E
506.51' TOTAL

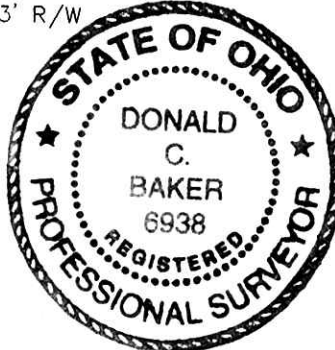
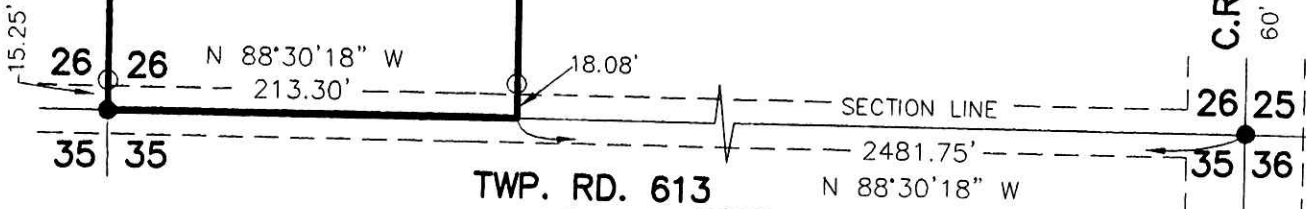
511.61' TOTAL

S 01°23'17" W



SCALE: 1"=100'

- 5/8" REBAR FOUND UNLESS OTHERWISE NOTED
- 5/8" REBAR WITH I.D. CAP SET I.D. CAP MARKED "BAKER 6938"



PLAT APPROVED

9/1/2006



DONALD C. BAKER SURVEYING
138 N. CLAY ST.
MILLERSBURG, OH 44654
PH. 330-674-4788
FAX: 330-674-6027

I CERTIFY THIS SURVEY TO BE CORRECT TO THE BEST OF MY KNOWLEDGE.

Donald C. Baker
DONALD C. BAKER PS 6938
DATE: AUG. 3, 2006
KES/AEG
File Name: C:\WORK\S-550-06\ERZ