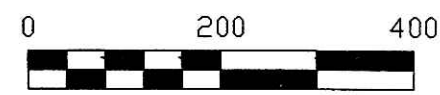


CLARK TOWNSHIP
S.E. QTR. SECTION 7
T-8 N; R-4 W
HOLMES COUNTY, OHIO

SURVEYED FOR: ROBERT SCHLABACH

APPROVED FOR TRANSFER ONLY
NO SUBDIVISION PLAT REQUIRED
(O.R.C. 711.001 & 711.131)
Lot(s) not for building unless
approved by Board of Health.
HOLMES CO. PLANNING COMM.
By AB Date 9/19/06



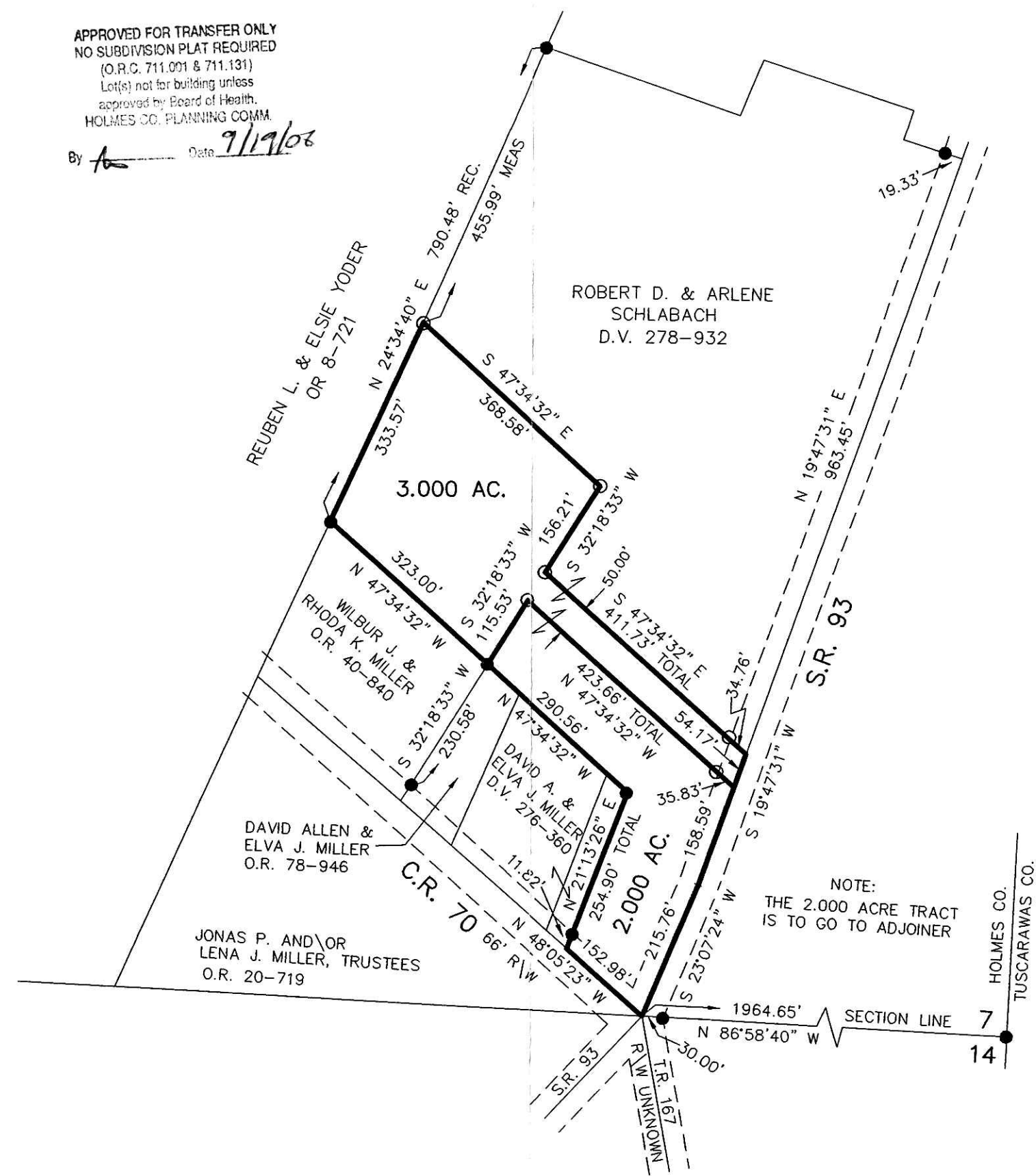
SCALE: 1"=200'

- 5/8" REBAR FOUND
- 5/8" REBAR WITH I.D. CAP SET
I.D. CAP MARKED "BAKER 6938"

REFERENCES:

- DEED VOL. 278 PAGE 932
- DEED VOL. 276 PAGE 360
- O.R. VOL. 40 PAGE 840
- O.R. VOL. 78 PAGE 946
- PLAT VOL. 16 PAGE 474
- PLAT VOL. 16 PAGE 927
- PLAT VOL. 16 PAGE 560
- PLAT VOL. 17 PAGE 586
- PLAT VOL. 5 PAGE 51
- PLAT VOL. 5 PAGE 123
- PLAT VOL. 3 PAGE 59 B
- BEARINGS FROM PLAT VOL. 16 PAGE 474

DONALD C. BAKER SURVEYING
138 N. CLAY ST.
MILLERSBURG, OH 44654
PH. 330-674-4788
FAX: 330-674-6027



ROBERT D. & ARLENE
SCHLABACH
D.V. 278-932

REUBEN L. & ELSIE YODER
OR 8-721

WILBUR J. &
RHODA K. MILLER
O.R. 40-840

DAVID ALLEN &
ELVA J. MILLER
O.R. 78-946

JONAS P. AND/OR
LENA J. MILLER, TRUSTEES
O.R. 20-719

3.000 AC.

2.000 AC.

S.R. 93

C.R. 70

HOLMES CO.
TUSCARAWAS CO.

NOTE:
THE 2.000 ACRE TRACT
IS TO GO TO ADJOINER

200600045887
Filed for Record in
HOLMES COUNTY, OH
SALLY MILLER
09-25-2006 At 03:15 pm.
SMALL PLAT 40.00
OR Book 19 Page 811 - 811

200600045887
HOLMES CTY
TITLE
MILLERSBURG, OH

OR 191p 3036
OR 191p 3038



I CERTIFY THIS SURVEY TO BE CORRECT
TO THE BEST OF MY KNOWLEDGE.

Donald C. Baker
DONALD C. BAKER PS 6938
KES\AEG DATE: SEPTEMBER 6, 2006
File Name: C:\WORK\S-619-06

PLAT APPROVED

9/18/2006

Instrument
200600045887 OR
Book Page
19 811