

200600044105
Filed for Record in
HOLMES COUNTY, OH
SALLY MILLER
06-12-2006 At 02:00 pm.
PLAT MED 43.20
OR Book 19 Page 729 - 729
REV 189 page 2101

BERLIN TOWNSHIP
3RD. QTR., LOTS 21, 22, 27 & 28
T-9 N; R-5 W
HOLMES COUNTY, OHIO

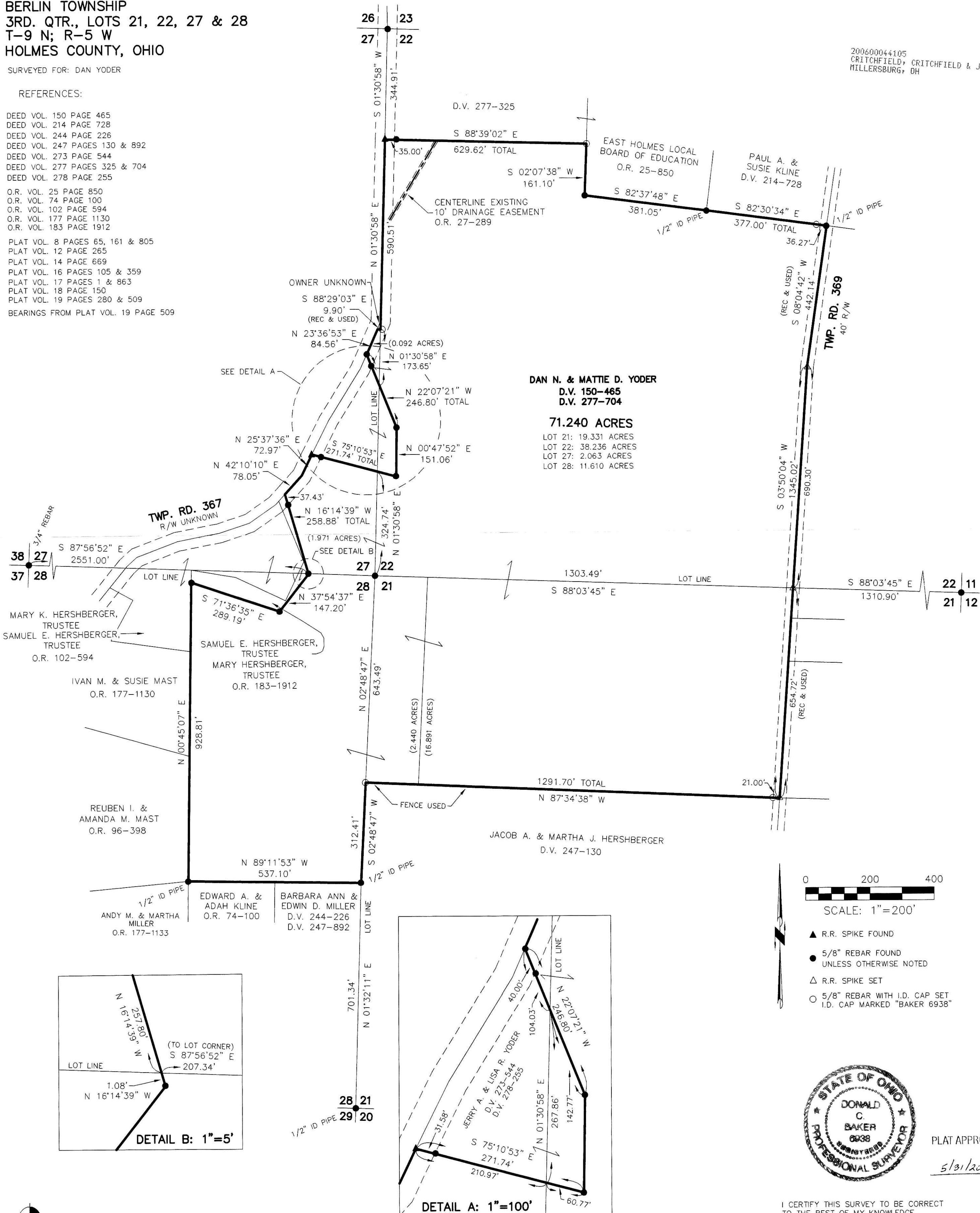
SURVEYED FOR: DAN YODER

REFERENCES:

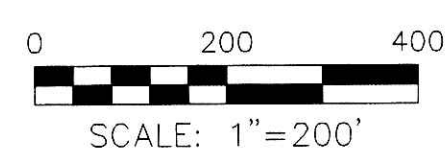
- DEED VOL. 150 PAGE 465
- DEED VOL. 214 PAGE 728
- DEED VOL. 244 PAGE 226
- DEED VOL. 247 PAGES 130 & 892
- DEED VOL. 273 PAGE 544
- DEED VOL. 277 PAGES 325 & 704
- DEED VOL. 278 PAGE 255
- O.R. VOL. 25 PAGE 850
- O.R. VOL. 74 PAGE 100
- O.R. VOL. 102 PAGE 594
- O.R. VOL. 177 PAGE 1130
- O.R. VOL. 183 PAGE 1912
- PLAT VOL. 8 PAGES 65, 161 & 805
- PLAT VOL. 12 PAGE 265
- PLAT VOL. 14 PAGE 669
- PLAT VOL. 16 PAGES 105 & 359
- PLAT VOL. 17 PAGES 1 & 863
- PLAT VOL. 18 PAGE 150
- PLAT VOL. 19 PAGES 280 & 509

BEARINGS FROM PLAT VOL. 19 PAGE 509

200600044105
CRITCHFIELD, CRITCHFIELD & JOHNSTON
MILLERSBURG, OH



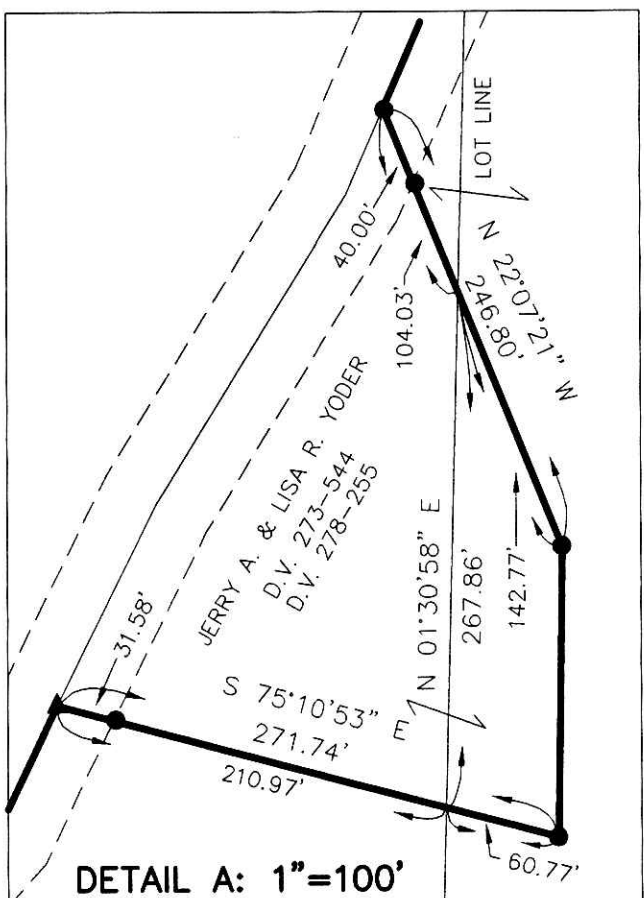
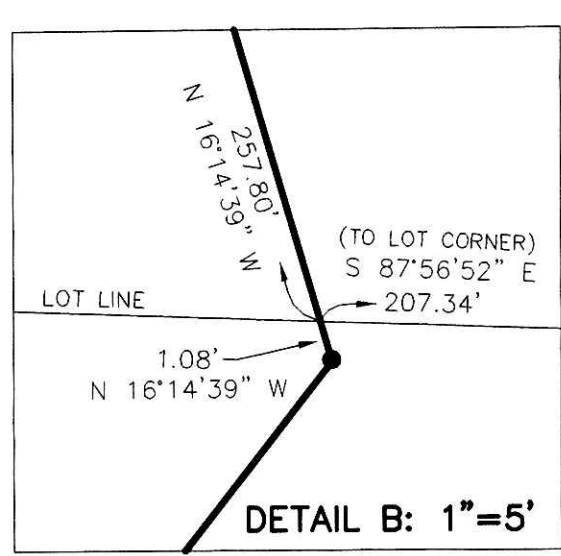
DAN N. & MATTIE D. YODER
D.V. 150-465
D.V. 277-704
71.240 ACRES
LOT 21: 19.331 ACRES
LOT 22: 38.236 ACRES
LOT 27: 2.063 ACRES
LOT 28: 11.610 ACRES



- ▲ R.R. SPIKE FOUND
- 5/8" REBAR FOUND UNLESS OTHERWISE NOTED
- △ R.R. SPIKE SET
- 5/8" REBAR WITH I.D. CAP SET I.D. CAP MARKED "BAKER 6938"



PLAT APPROVED
5/31/2006



I CERTIFY THIS SURVEY TO BE CORRECT TO THE BEST OF MY KNOWLEDGE.
Donald C. Baker
DONALD C. BAKER PS 6938
DATE: MAY 18, 2006
FDB\ALG
File Name: C:\WORK\S-144-06\ERZ

DONALD C. BAKER SURVEYING
138 N. CLAY ST.
MILLERSBURG, OH 44654
PH. 330-674-4788
FAX: 330-674-6027