

KILLBUCK TOWNSHIP
 N.W. QTR. SECTION 24
 T-8 N; R-7 W
 HOLMES COUNTY, OHIO

SURVEYED FOR: MONTELL ROHR



SCALE: 1"=200'

- ▲ R.R. SPIKE FOUND
- 5/8" REBAR FOUND
- 5/8" REBAR WITH I.D. CAP SET
I.D. CAP MARKED "BAKER 6938"

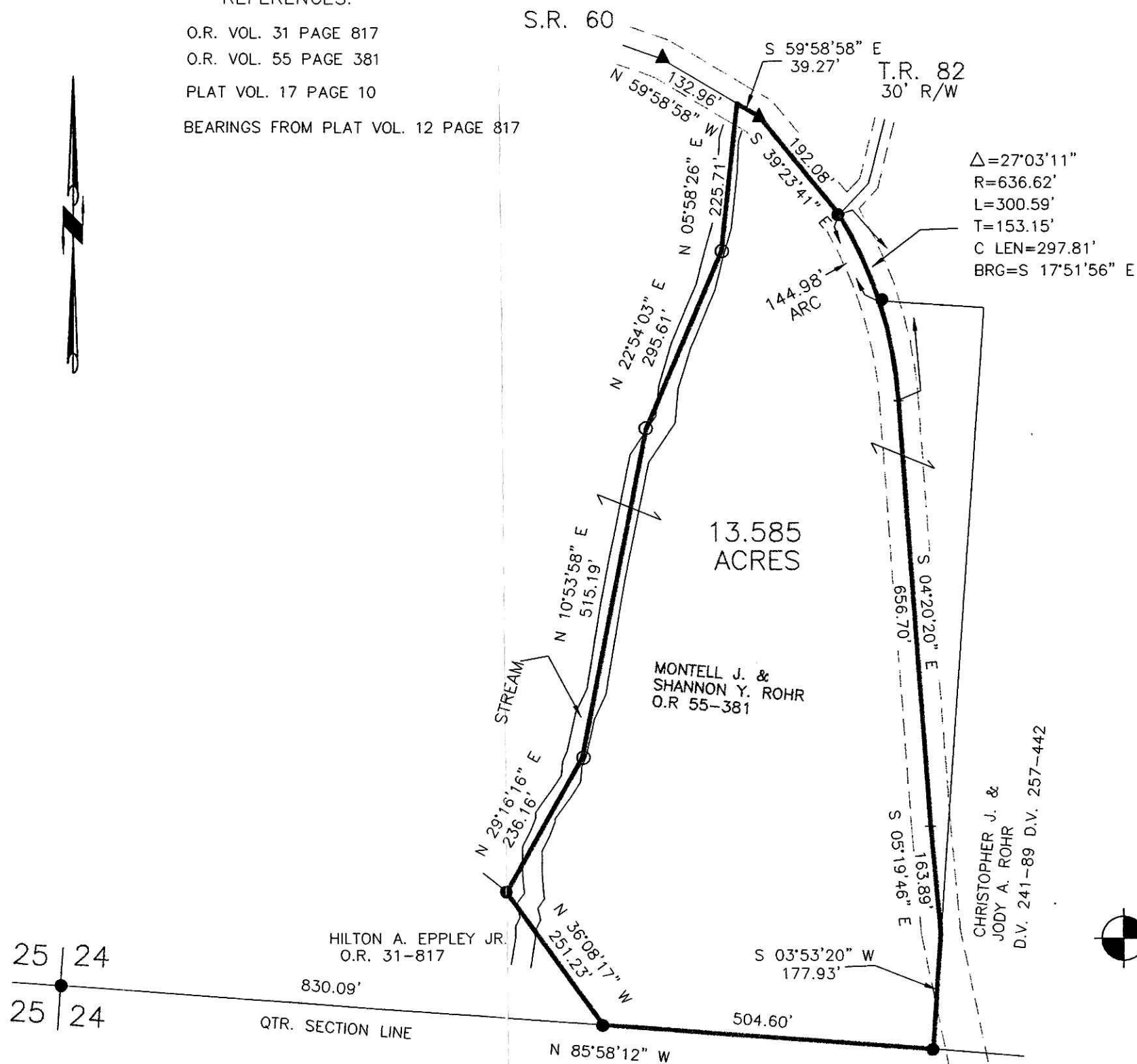


I CERTIFY THIS SURVEY TO BE CORRECT
 TO THE BEST OF MY KNOWLEDGE.

Donald C. Baker
 DONALD C. BAKER PS 6938
 FDB/AEG DATE: FEB. 24, 2006
 File Name: C:\WORK\S-130-06\FB-MD

REFERENCES:

- O.R. VOL. 31 PAGE 817
- O.R. VOL. 55 PAGE 381
- PLAT VOL. 17 PAGE 10
- BEARINGS FROM PLAT VOL. 12 PAGE 817



Instrument Book Page
 200600043975 OR 19 726

200600043975
 Filed for Record in
 HOLMES COUNTY, OH
 SALLY MILLER
 06-06-2006 At 10:42 am.
 SMALL PLAT 40.00
 OR Book 19 Page 726 - 726
 OR 189 p 1490

200600043975
 HEARTLAND
 TITLE
 MILLERSBURG, OH

CHRISTOPHER J. &
 JODY A. ROHR
 D.V. 241-89 D.V. 257-442



DONALD C. BAKER SURVEYING
 138 N. CLAY ST.
 MILLERSBURG, OH 44654
 PH. 330-674-4788
 FAX: 330-674-6027

PLAT APPROVED

6/2/2006