

CLAY ACRES SUBDIVISION

GRANTORS:
 ELI H. & MATTIE J. YODER
 3347 T.R. 110
 MILLERSBURG, OH 44654

(FINAL)

Instrument 200600043753 OR Book Page 19 716

200600043753
 Filed for Record in
 HOLMES COUNTY, OH
 SALLY MILLER
 05-25-2006 At 09:30 am.
 PLAT MED 43.20
 OR Book 19 Page 716 - 716

NOTE: SIGN IN PERMANENT BLACK INK.

CERTIFICATE OF OWNERSHIP AND DEDICATION
 We hereby certify that we are the owners of the property shown and described hereon and that we hereby adopt this plan of subdivision with our free consent and establish the minimum building restriction lines.

Eli H. Yoder May 15, 2006
 ELI H. YODER DATE
Mattie J. Yoder May 15, 2006
 MATTIE J. YODER DATE

CERTIFICATE OF APPROVAL OF WATER SUPPLY AND SEWAGE TREATMENT SYSTEMS

I hereby certify that the Subdivision plat entitled CLAY ACRES SUBDIVISION, meets the requirements of the Board of Health for water supply and sewage treatment and is hereby approved for recording. The issuance of permits to install a private water system and on-site sewage treatment system for any lot is dependent on a site specific evaluation prior to the start of any construction.

D. McFadden 5/18/2006
 Health Commissioner Date

CERTIFICATE OF APPROVAL BY THE HOLMES SOIL AND WATER CONSERVATION DISTRICT

I hereby certify that I have approved the subdivision plat and/or agreements or provisions for sedimentation and erosion control as stated or shown hereon.

Che Christner 5/17/06
 Holmes Soil and Water Conservation District Date

CERTIFICATE OF THE APPROVAL BY THE COUNTY COMMISSIONERS
 I hereby certify that the Holmes County Commissioners have approved the subdivision plat as shown hereon.

David C. Han 5/22/06
 Chairman, County Commissioners Date

CERTIFICATE OF THE APPROVAL OF PLAT

I hereby certify that I have approved the plat shown hereon.

Christopher R. Young, PE, P.S. 5/17/06
 County Engineer by D. C. Han, P.S.

CERTIFICATE OF APPROVAL FOR RECORDING

I hereby certify that the subdivision plat shown hereon has been found to comply with the subdivision regulations for Holmes County, Ohio, with the exception of such variances, if any, as prenoted in the minutes of the Holmes County Planning Commission and that it has been approved for recording in the office of the County Recorder.

James R. O'Connell 5/18/06
 Holmes County Planning Commission Date

CERTIFICATE OF ACCURACY

I hereby certify that the plan shown and described hereon is a true and correct survey to the accuracy required by the Holmes County Planning Commission and that the monuments have been placed as shown hereon.

Donald C. Baker MAY 15, 2006
 Donald C. Baker P.S. 6938 Date

REFERENCES:

- DEED VOL. 268 PAGE 22
 - O.R. VOL. 14 PAGE 904
 - O.R. VOL. 173 PAGE 2988
 - O.R. VOL. 180 PAGE 2439
 - PLAT VOL. 14 PAGE 765
 - PLAT VOL. 14 PAGE 710
- BEARINGS FROM PLAT VOL. 14 PAGE 710

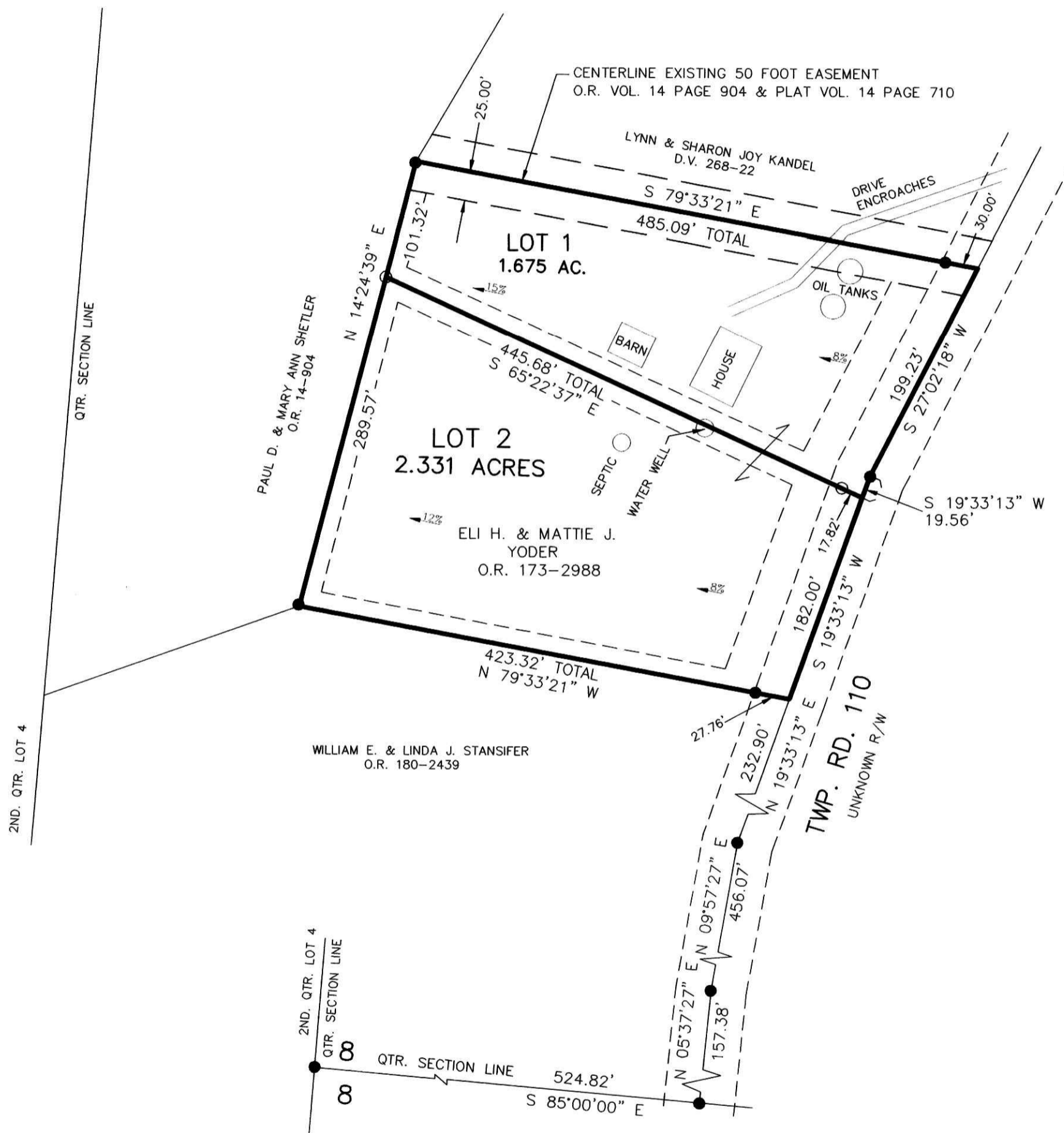
For erosion and sedimentation control, the landowner will follow the Rainwater and Land Development, Ohio's Standards for Stormwater Management and Urban Street Protection. A copy of the Rainwater and Land Development, Ohio's Standards is available at the Holmes Soil and Water Conservation District Office: 62 West Clinton Street Millersburg, Ohio 44654

NOTE: BUILDING SETBACK LINES ARE 15' OFF SIDE & REAR LOT LINES EXCEPT FOR THE NORTH LINE OF LOT 1 WHICH IS TO BE 25' DUE TO AN EXISTING EASEMENT 30' OFF ROAD RIGHT OF WAY

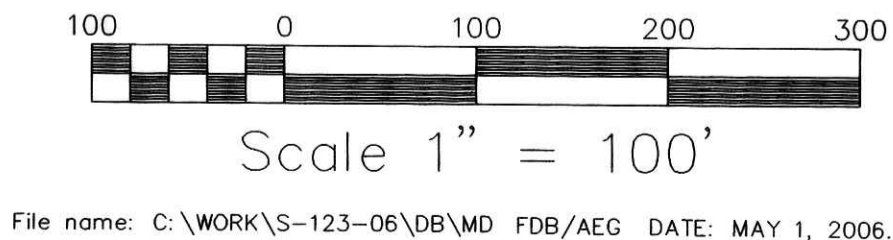
THESE LOTS ARE FOR RESIDENTIAL PURPOSES ONLY.

No further splits will be permitted without replatting said lots.

AREA IN LOTS 4.006 ACRES.
 AREA IN ROAD DEDICATION 0.000 ACRES.
 TOTAL AREA IN ALLOTMENT 4.006 ACRES.



DONALD C. BAKER SURVEYING
 138 N. CLAY ST.
 MILLERSBURG, OHIO 44654
 PH. 330-674-4788
 FAX 330-674-6027



MECHANIC TOWNSHIP
 N.E. QTR. SECTION 8
 T-8 N; R-6 W
 HOLMES COUNTY, OHIO

- 5/8" REBAR FOUND UNLESS OTHERWISE NOTED
- 5/8" REBAR WITH I.D. CAP SET I.D. CAP MARKED "BAKER 6938"

TRANSFER NOT NECESSARY
 DATE 5/25/06
 AUDITOR Jackie McKee